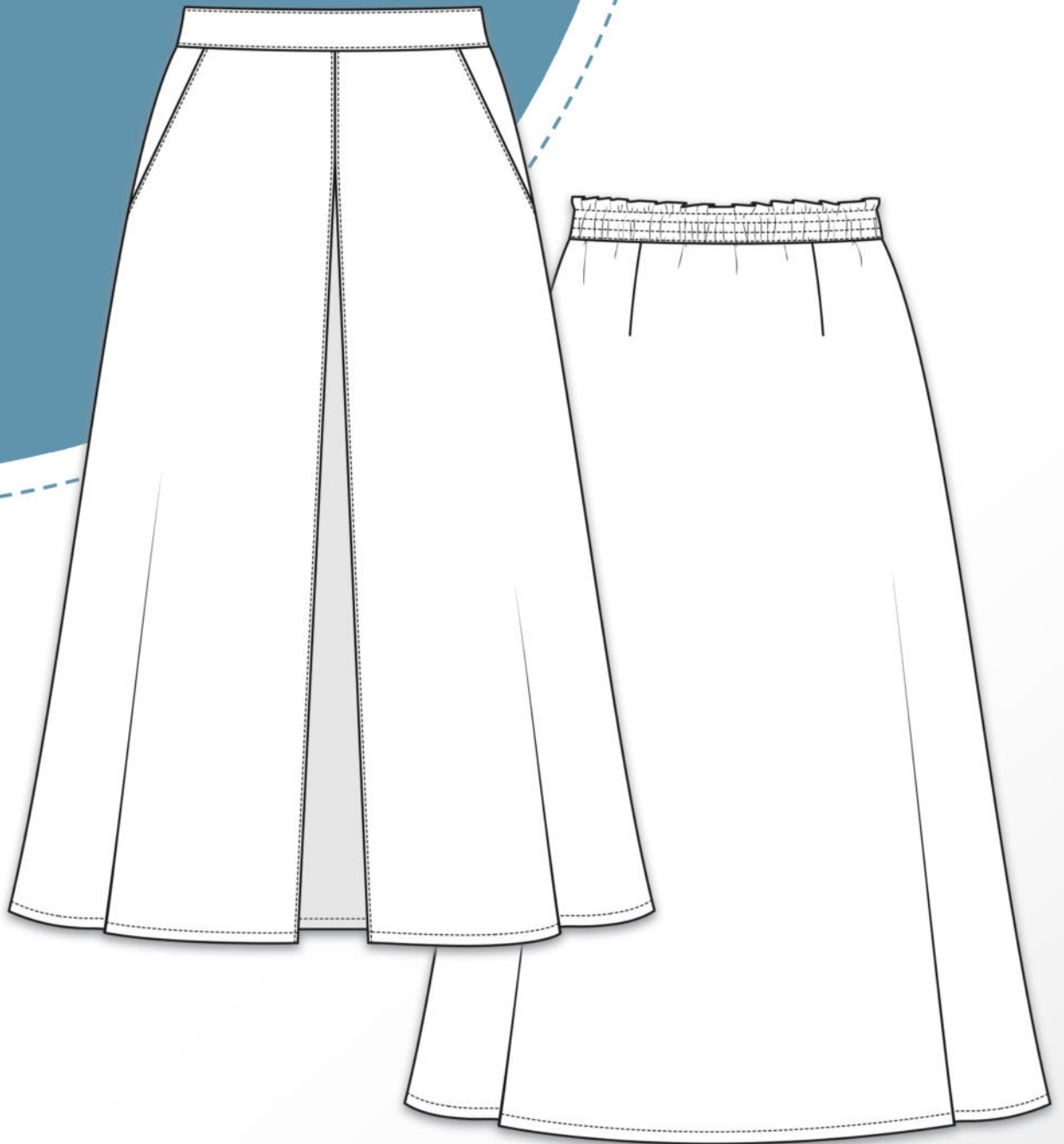


anemona

34 - 58

erbsünde



schnittmuster



sewing pattern

About Anemona

Anemona is a classic, flared skirt with side pockets. It sits high on the waist, and the front box pleat gives it the appearance of culottes. The smooth front waistband creates a sleek look, while the elastic band integrated into the back ensures a comfortable fit. Two additional back darts enhance the silhouette, while the back of the skirt falls smoothly. Anemona has a length of 80 cm, but it can easily be shortened or lengthened according to your preference. If you'd like to add belt loops to the waistband, you can find a step-by-step, illustrated tutorial under "Learn to Sew" in the DIY section on erbsuende.com.

Body Measurement Chart

The following chart will help you select the right size. The size is based on waist measurement, as the skirt has a wide flare.

Size EU	34	36	38	40	42	44	46	48	50	52	54	56	58
Waist	up to 75cm	up to 78cm	up to 83cm	up to 87cm	up to 91cm	up to 95cm	up to 99cm	up to 105cm	up to 111cm	up to 117cm	up to 123cm	up to 129cm	up to 135cm
Hip circumference	up to 90cm	up to 93cm	up to 97cm	up to 100cm	up to 105cm	up to 110cm	up to 115cm	up to 120cm	up to 125cm	up to 130cm	up to 135cm	up to 140cm	up to 145cm

Fabric Recommendation

All woven fabrics are suitable, such as cotton, denim, corduroy, canvas, tweed, lightweight wool fabrics, linen, etc.

Fabric Quantity for a Fabric Width of 1.45m

Size EU	34	36	38	40	42	44	46	48	50	52	54	56	58
Fabric Length	2.2m	2.2m	2.2m	2.5m	2.5m	2.5m	2.5m	2.5m	2.5m	2.5m	3m	3m	3m

Seam and Hem Allowances

The sewing pattern does not include seam or hem allowances; these must be added individually when cutting the fabric.

Required Materials

- Fabric (see above)
- 3 cm wide elastic band
- Tape for assembling the pattern pieces
- Scissors, measuring tape, pins, or clips
- Sewing machine, overlock/coverlock (if available), iron

Important Notes

Please read the entire instructions before cutting the fabric!

To correctly open and print the sewing pattern, please use the latest version of Adobe Acrobat Reader.

When printing, ensure the setting is either 100% or "no page scaling."

Legal Notice

All rights to this pattern are owned by Ilka Matthiessen, erbsünde. The pattern may be used for personal purposes. For commercial use, a maximum of 20 finished garments can be made and sold without a license. For the commercial production of more than 20 garments, a business license must be purchased in advance at www.erbsuende.com. Mass production of garments made from this pattern is prohibited. Distribution, resale, exchange, copying, printing, or (partial) publication of this pattern are expressly prohibited—violations of copyright will result in substantial fines. When selling garments made from this pattern, the following must be indicated: **Sewn according to a pattern by erbsünde.**



Cutting Out Anemona

Fold the fabric with the wrong sides together. Place the pattern piece for the front skirt along the edge labeled "center front/fold" at the fabric fold. Cut the front piece once on the fold. Finish the edges of the pattern piece (serge or use another method of finishing).



Fold the fabric again with the wrong sides together and place the pattern piece for the back skirt along the edge labeled "center back/fold" at the fabric fold. The back skirt is significantly narrower than the front skirt in this pattern! Then, cut the back piece once on the fold. The pattern piece will be finished later.



Cut the pocket piece once in double fabric layers.

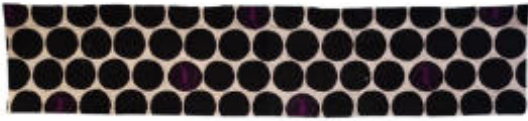
Finish the edges of both pattern pieces.

Legal Notice

All rights to this pattern are owned by Ilka Matthiessen, erbsünde. The pattern may be used for personal purposes. For commercial use, a maximum of 20 finished garments can be made and sold without a license. For the commercial production of more than 20 garments, a business license must be purchased in advance at www.erbsuende.com. Mass production of garments made from this pattern is prohibited. Distribution, resale, exchange, copying, printing, or [partial] publication of this pattern are expressly prohibited—violations of copyright will result in substantial fines. When selling garments made from this pattern, the following must be indicated: **Sewn according to a pattern by erbsünde.**

Cut the front waistband once in a single layer of fabric.

Finish the edges of the pattern piece.



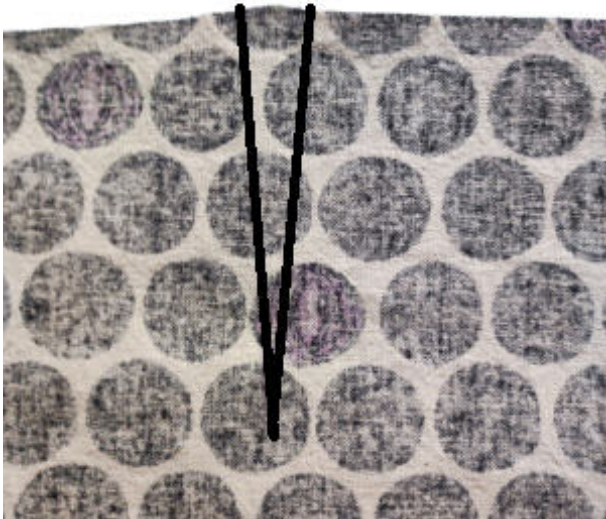
Cut the back waistband once on the fold.

Finish the edges of the pattern piece.

Sewing Anemona

First, the darts on the back skirt are sewn.

To do this, transfer the dart positions from the pattern onto the back skirt.



Pin the dart right sides together along the markings.



Legal Notice

All rights to this pattern are owned by Ilka Matthiessen, erbsünde. The pattern may be used for personal purposes. For commercial use, a maximum of 20 finished garments can be made and sold without a license. For the commercial production of more than 20 garments, a business license must be purchased in advance at www.erbsuende.com. Mass production of garments made from this pattern is prohibited. Distribution, resale, exchange, copying, printing, or (partial) publication of this pattern are expressly prohibited—violations of copyright will result in substantial fines. When selling garments made from this pattern, the following must be indicated: **Sewn according to a pattern by erbsünde.**



Sew the dart along the marking using a straight stitch on the sewing machine.



Fold the dart towards the side seam and press it flat with an iron. Repeat the process with the other dart.



This is how the dart looks from the right side of the fabric.

Now, finish the edges of the back skirt all the way around.

Legal Notice

All rights to this pattern are owned by Ilka Matthiessen, erbsünde. The pattern may be used for personal purposes. For commercial use, a maximum of 20 finished garments can be made and sold without a license. For the commercial production of more than 20 garments, a business license must be purchased in advance at www.erbsuende.com. Mass production of garments made from this pattern is prohibited. Distribution, resale, exchange, copying, printing, or (partial) publication of this pattern are expressly prohibited—violations of copyright will result in substantial fines. When selling garments made from this pattern, the following must be indicated: **Sewn according to a pattern by erbsünde.**

This is how your back skirt looks now.

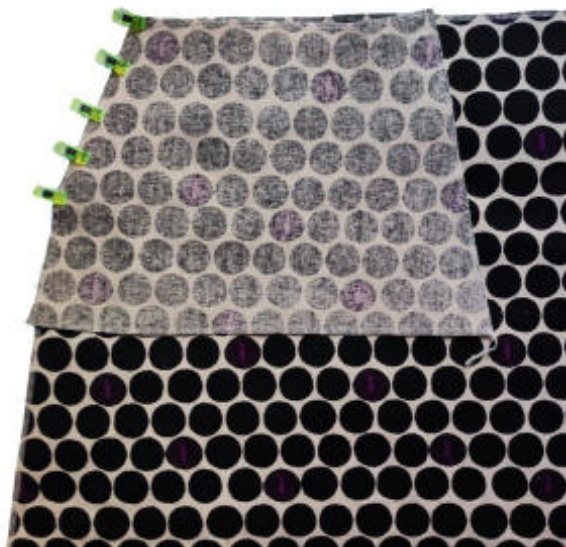


Now, take the front piece and lay it open with the right side of the fabric facing up in front of you.

Next, take the first pocket piece.



Place the pocket piece right sides together on the skirt piece. Pin the slanted edges of the skirt and pocket together, then sew the seam.



Legal Notice

All rights to this pattern are owned by Ilka Matthiessen, erbsünde. The pattern may be used for personal purposes. For commercial use, a maximum of 20 finished garments can be made and sold without a license. For the commercial production of more than 20 garments, a business license must be purchased in advance at www.erbsuende.com. Mass production of garments made from this pattern is prohibited. Distribution, resale, exchange, copying, printing, or (partial) publication of this pattern are expressly prohibited—violations of copyright will result in substantial fines. When selling garments made from this pattern, the following must be indicated: **Sewn according to a pattern by erbsünde.**



Flip the pocket bag to the inside.
The pocket now lies wrong sides together with the skirt piece.



Now fold the pocket at the marking from the pattern (grainline) right sides together. Pin the lower edges of the pocket together, and secure the pocket to the top edge of the front skirt with a few clips or pins.



Sew the bottom edge of the pocket closed, making sure to only sew the pocket itself. Do not catch the skirt piece in the seam!

Secure the top edge of the pocket to the front skirt with a few stitches within the seam allowance.

Legal Notice

All rights to this pattern are owned by Ilka Matthiessen, erbsünde. The pattern may be used for personal purposes. For commercial use, a maximum of 20 finished garments can be made and sold without a license. For the commercial production of more than 20 garments, a business license must be purchased in advance at www.erbsuende.com. Mass production of garments made from this pattern is prohibited. Distribution, resale, exchange, copying, printing, or (partial) publication of this pattern are expressly prohibited—violations of copyright will result in substantial fines. When selling garments made from this pattern, the following must be indicated: **Sewn according to a pattern by erbsünde.**

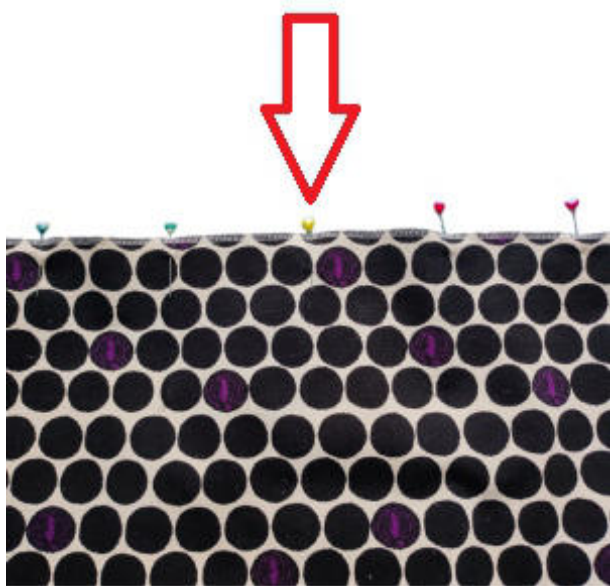


Also secure the pocket bag to the side edge with a few stitches within the seam allowance.



This is how the pocket looks from the right side of the fabric.

Now, repeat the same process with the other pocket.



Transfer the markings for the box pleat from the pattern to the top edge of the front skirt.

The red arrow indicates the center of the box pleat.

Legal Notice

All rights to this pattern are owned by Ilka Matthiessen, erbsünde. The pattern may be used for personal purposes. For commercial use, a maximum of 20 finished garments can be made and sold without a license. For the commercial production of more than 20 garments, a business license must be purchased in advance at www.erbsuende.com. Mass production of garments made from this pattern is prohibited. Distribution, resale, exchange, copying, printing, or (partial) publication of this pattern are expressly prohibited—violations of copyright will result in substantial fines. When selling garments made from this pattern, the following must be indicated: **Sewn according to a pattern by erbsünde.**



First, fold the fabric at the left marking towards the center (arrow).



Align the markings precisely on top of each other.



A pleat has now formed.

Legal Notice

All rights to this pattern are owned by Ilka Matthiessen, erbsünde. The pattern may be used for personal purposes. For commercial use, a maximum of 20 finished garments can be made and sold without a license. For the commercial production of more than 20 garments, a business license must be purchased in advance at www.erbsuende.com. Mass production of garments made from this pattern is prohibited. Distribution, resale, exchange, copying, printing, or (partial) publication of this pattern are expressly prohibited—violations of copyright will result in substantial fines. When selling garments made from this pattern, the following must be indicated: **Sewn according to a pattern by erbsünde.**

Next, fold the fabric from the right marking towards the center as well.



Align the right marking exactly with the center marking again.



The other half of the box pleat has now formed.

Press the pleats neatly into place with an iron.

Do not sew the pleats down!



Legal Notice

All rights to this pattern are owned by Ilka Matthiessen, erbsünde. The pattern may be used for personal purposes. For commercial use, a maximum of 20 finished garments can be made and sold without a license. For the commercial production of more than 20 garments, a business license must be purchased in advance at www.erbsuende.com. Mass production of garments made from this pattern is prohibited. Distribution, resale, exchange, copying, printing, or (partial) publication of this pattern are expressly prohibited—violations of copyright will result in substantial fines. When selling garments made from this pattern, the following must be indicated: **Sewn according to a pattern by erbsünde.**



The top 10 cm of the pleat will be sewn together.

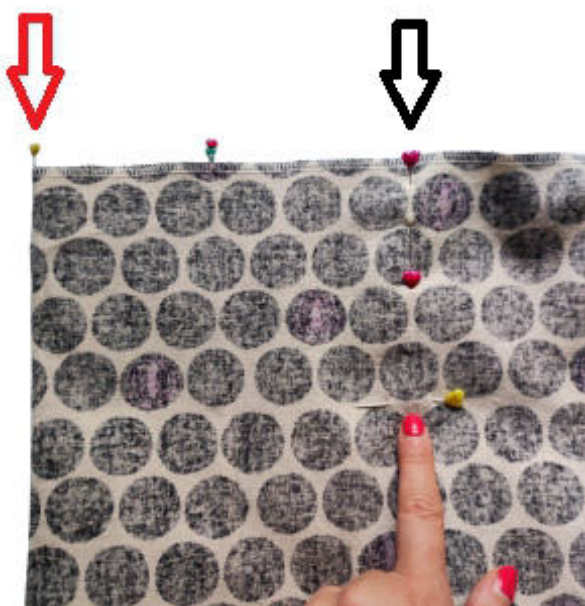
This image is just to illustrate the final result. The steps to achieve it will be explained in the following instructions.



The pleat will be sewn together from the inside, meaning from the wrong side of the fabric.

To do this, fold the front skirt in half along the center (red arrow) with right sides together. The pressed edges must align precisely.

The black arrow indicates where the seam will be sewn.



Now, mark 10 cm from the top edge (using a pin placed horizontally).

This is where the pleat will be sewn together.

Pin the fabric along the pressed fold up to the horizontal pin.

Legal Notice

All rights to this pattern are owned by Ilka Matthiessen, erbsünde. The pattern may be used for personal purposes. For commercial use, a maximum of 20 finished garments can be made and sold without a license. For the commercial production of more than 20 garments, a business license must be purchased in advance at www.erbsuende.com. Mass production of garments made from this pattern is prohibited. Distribution, resale, exchange, copying, printing, or (partial) publication of this pattern are expressly prohibited—violations of copyright will result in substantial fines. When selling garments made from this pattern, the following must be indicated: **Sewn according to a pattern by erbsünde.**

Sew the pleat closed using a simple straight stitch.



Turn the skirt to the right side of the fabric and pin the box pleat in its final position. The top 10 cm of the box pleat is now secured with an invisible seam.



Now secure the pleat at the top edge with a few stitches within the seam allowance.



Legal Notice

All rights to this pattern are owned by Ilka Matthiessen, erbsünde. The pattern may be used for personal purposes. For commercial use, a maximum of 20 finished garments can be made and sold without a license. For the commercial production of more than 20 garments, a business license must be purchased in advance at www.erbsuende.com. Mass production of garments made from this pattern is prohibited. Distribution, resale, exchange, copying, printing, or (partial) publication of this pattern are expressly prohibited—violations of copyright will result in substantial fines. When selling garments made from this pattern, the following must be indicated: **Sewn according to a pattern by erbsünde.**

This is how your front skirt looks now.
The box pleat is not visible because the pattern aligns perfectly.



Next, take the back skirt and place it right sides together with the front skirt.
Due to the box pleat, the front skirt is now significantly narrower than the back skirt.



Pin the first set of side seams together and sew the seam.
Repeat the process on the other side.

Turn the skirt to the right side.
This is how your skirt looks now.

**Legal Notice**

All rights to this pattern are owned by Ilka Matthiessen, erbsünde. The pattern may be used for personal purposes. For commercial use, a maximum of 20 finished garments can be made and sold without a license. For the commercial production of more than 20 garments, a business license must be purchased in advance at www.erbsuende.com. Mass production of garments made from this pattern is prohibited. Distribution, resale, exchange, copying, printing, or (partial) publication of this pattern are expressly prohibited—violations of copyright will result in substantial fines. When selling garments made from this pattern, the following must be indicated: **Sewn according to a pattern by erbsünde.**

Let's move on to the waistband.
Take the back waistband and lay it open
with the right side of the fabric facing up in
front of you.



Place the front waistband right sides
together on top of the back waistband and
pin the short edges together. The front
waistband is shorter than the back
waistband.



Sew the seam, and repeat the process on
the other side.

**Legal Notice**

All rights to this pattern are owned by Ilka Matthiessen, erbsünde. The pattern may be used for personal purposes. For commercial use, a maximum of 20 finished garments can be made and sold without a license. For the commercial production of more than 20 garments, a business license must be purchased in advance at www.erbsuende.com. Mass production of garments made from this pattern is prohibited. Distribution, resale, exchange, copying, printing, or (partial) publication of this pattern are expressly prohibited—violations of copyright will result in substantial fines. When selling garments made from this pattern, the following must be indicated: **Sewn according to a pattern by erbsünde.**

Cut a piece of elastic that is 5 cm shorter than the front waistband.



Place the elastic on the back waistband, positioning it in the upper half of the waistband's height. Pin the ends of the elastic to the seam allowances of the side seams.



Sew the ends of the elastic onto the seam allowance on both sides. Again, make sure the elastic is placed on the back waistband!



Legal Notice

All rights to this pattern are owned by Ilka Matthiessen, erbsünde. The pattern may be used for personal purposes. For commercial use, a maximum of 20 finished garments can be made and sold without a license. For the commercial production of more than 20 garments, a business license must be purchased in advance at www.erbsuende.com. Mass production of garments made from this pattern is prohibited. Distribution, resale, exchange, copying, printing, or (partial) publication of this pattern are expressly prohibited—violations of copyright will result in substantial fines. When selling garments made from this pattern, the following must be indicated: **Sewn according to a pattern by erbsünde.**

Topstitch the elastic onto the back waistband, stretching it evenly as you sew. Use two rows of stitching, spaced 1 cm apart.



Next, fold the waistband wrong sides together. The elastic is now on the inside. Mark the quarters of the waistband along the open edges.

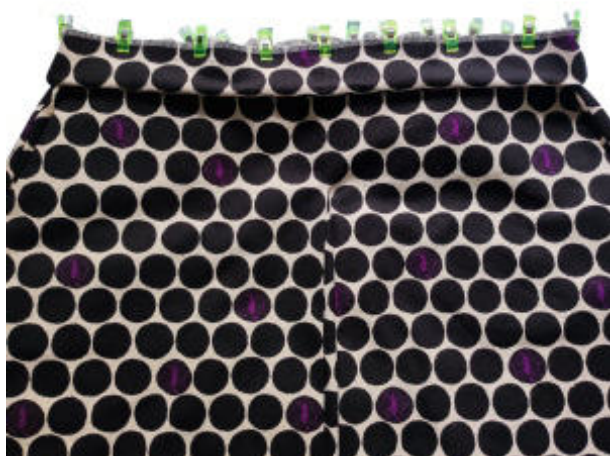


Now, take the skirt back in hand.



Legal Notice

All rights to this pattern are owned by Ilka Matthiessen, erbsünde. The pattern may be used for personal purposes. For commercial use, a maximum of 20 finished garments can be made and sold without a license. For the commercial production of more than 20 garments, a business license must be purchased in advance at www.erbsuende.com. Mass production of garments made from this pattern is prohibited. Distribution, resale, exchange, copying, printing, or (partial) publication of this pattern are expressly prohibited—violations of copyright will result in substantial fines. When selling garments made from this pattern, the following must be indicated: **Sewn according to a pattern by erbsünde.**



Pin the waistband right sides together around the outside top edge of the skirt. The side seams of the skirt and waistband must align perfectly. Ensure that the part with the elastic is right sides together with the back of the skirt.



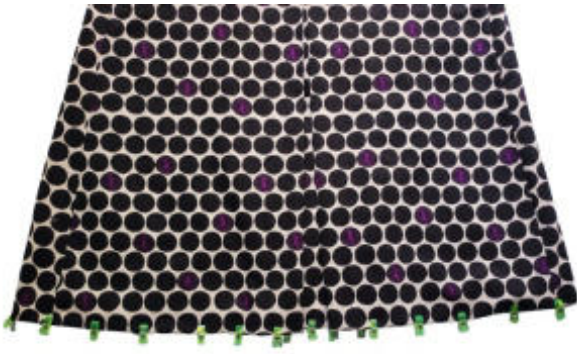
Sew the seam and then fold the waistband up.



This is how your skirt looks now.

Legal Notice

All rights to this pattern are owned by Ilka Matthiessen, erbsünde. The pattern may be used for personal purposes. For commercial use, a maximum of 20 finished garments can be made and sold without a license. For the commercial production of more than 20 garments, a business license must be purchased in advance at www.erbsuende.com. Mass production of garments made from this pattern is prohibited. Distribution, resale, exchange, copying, printing, or [partial] publication of this pattern are expressly prohibited—violations of copyright will result in substantial fines. When selling garments made from this pattern, the following must be indicated: **Sewn according to a pattern by erbsünde.**



Finally, hem the skirt.
Fold the hem allowance at the bottom of the skirt inward and topstitch the hem all the way around.

Your skirt is finished!



Here is an image where the pleat is more visible.



Legal Notice

All rights to this pattern are owned by Ilka Matthiessen, erbsünde. The pattern may be used for personal purposes. For commercial use, a maximum of 20 finished garments can be made and sold without a license. For the commercial production of more than 20 garments, a business license must be purchased in advance at www.erbsuende.com. Mass production of garments made from this pattern is prohibited. Distribution, resale, exchange, copying, printing, or (partial) publication of this pattern are expressly prohibited—violations of copyright will result in substantial fines. When selling garments made from this pattern, the following must be indicated: **Sewn according to a pattern by erbsünde.**