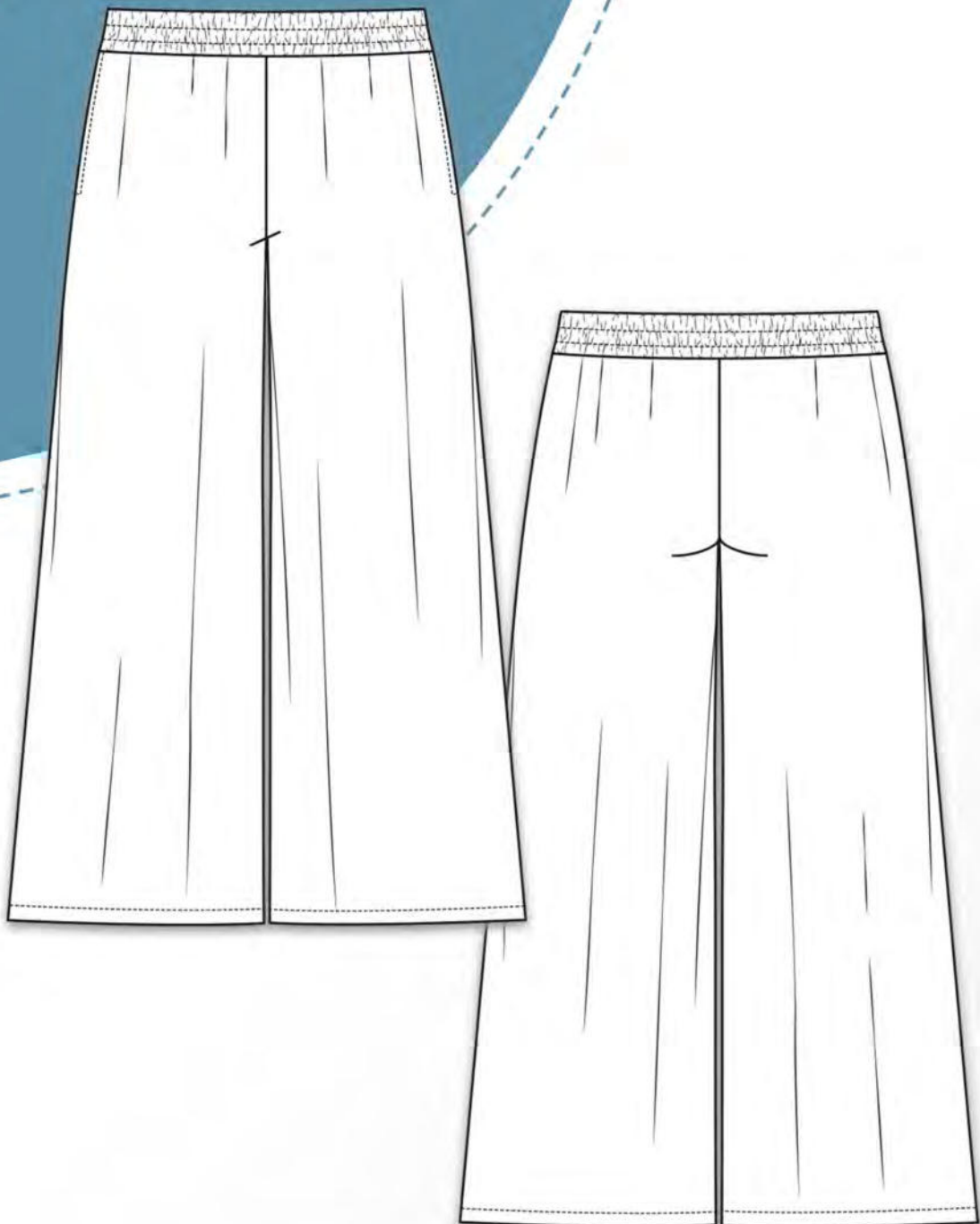


azur

32 - 56

erbsünde



schnittmuster

ë

sewing pattern

Foreword

I'm delighted that you've chosen an erbsünde sewing pattern.

Since 2013, I've poured my heart and soul into creating patterns for women, men, and children.

No body is shaped the same, and often ready-to-wear clothing doesn't fit perfectly. We want to move away from generic outfits and towards personalized tops, dresses, jackets, coats, and pants that can be made from your preferred fabrics - even in larger sizes and longer lengths. Each pattern can be customized to your liking and offers great versatility with numerous variations.

Our women's sewing patterns take into account the nuances of the female figure, creating visually harmonious silhouettes. Whether you have a large or small bust, generous hips, or a more slender frame, my goal is to enhance women's body confidence. I want to show them that with the right clothing, they can feel beautiful and comfortable in any size, empowering them to embrace their uniqueness and radiate confidence.

With these sewing patterns, you will expand your wardrobe with favorite pieces that make you feel comfortable and accompany you beautifully through your day.

The detailed, illustrated instructions will guide you through the entire process, from cutting the fabric to completing the garment step-by-step. Some elements may be new to you, but with the help of the instructions, you can learn and further perfect your sewing hobby.

On my website www.erbsuende.com (under DIY), you will find numerous tutorials and guides for pattern hacks and modifications. If you have any questions, feel free to email me at info@erbsuende.com.

I wish you much joy with your new sewing pattern.

Yours sincerely,
Ilka

Imprint

© erbsünde Ilka Matthiessen

Year of Publication: 2023

Author/Creator/Copyright Holder: Ilka Matthiessen

Editing/Proofreading: Ilka Matthiessen

This work, including its parts, is protected by copyright and may not be redistributed. Any use without the author's consent is strictly prohibited and expressly forbidden. This applies especially to (partially) electronic or other reproduction, translation, dissemination, distribution, and public accessibility.

All rights are reserved by
Ilka Matthiessen erbsünde
Karlsbader Str. 8
80937 München
info@erbsuende.com
www.erbsuende.com



Azur

Table of contents

Material Sheet: Amount of fabrics, required materials, important notes	1
Cut Azur	2 - 3
Sew Azur	3 - 9
Length adjustment	10



About Azur

Azur is a comfortable, wide-falling culotte with large seam pockets and an elastic waistband. The pants are worn at the waist and are long in length. The length can be individually adjusted. Depending on the choice of fabric, the culotte can be worn throughout the year. Made from non-stretch, lightweight fabrics like viscose and cotton in spring and summer - and from thicker, softly draping woven fabrics in the cooler seasons.

Body Measurement Chart

The following table is for size selection. Please choose the size based on the hip circumference.

Size EU	32	34	36	38	40	42	44	46	48	50	52	54	56
Waist	up to 70cm	up to 75cm	up to 80cm	up to 85cm	up to 90cm	up to 94cm	up to 97cm	up to 100cm	up to 105cm	up to 112cm	up to 118cm	up to 123cm	up to 130cm
Hips	up to 87cm	up to 90cm	up to 93cm	up to 97cm	up to 100cm	up to 105cm	up to 110cm	up to 115cm	up to 120cm	up to 125cm	up to 130cm	up to 135cm	up to 140cm

Fabric Recommendation

All soft, non-stretch fabrics such as viscose, cotton poplin, linen, muslin, satin, etc., are suitable for this project.

Fabric quantity for a fabric width of 1.45 meters

Size EU	32	34	36	38	40	42	44	46	48	50	52	54	56
Fabric length	2m	2m	2m	2m	2m	2m	2.5m	2.5m	2.5m	2.5m	2.5m	2.5m	2.5m

Seam and Hem Allowances

The sewing pattern does not include seam and hem allowances; these must be added individually when cutting the fabric.

Required Material

- Fabric (see above)
- 3-4cm wide elastic band for the waistband
- Tape for assembling the pattern
- Scissors, measuring tape, pins or clips
- Sewing machine, serger/coverstitch machine (if available), iron

Important Notes

- Please read the entire instructions before cutting!
- The pattern does not include seam and hem allowances.
- For the correct opening and printing of the pattern, please use the latest Adobe Acrobat Reader
- When printing, ensure it's set to either 100% or "no page scaling".

**Cut Azur**

Cut the front pants piece in double fabric layers. You will get 2 mirror-image pattern pieces. Finish the raw edges of the pattern pieces.

Be sure to transfer any markings, notches, or dart lines from the pattern to the fabric pieces accurately. This will help ensure proper assembly and fitting during the sewing process.



Cutting the back pants piece:
Cut it once in double fabric layers. You will get 2 mirror-image pattern pieces. Finish the raw edges of the pattern pieces.



Cut the front and back waistband facings each once in a single layer of fabric. Finish the raw edges of the pattern pieces.

ATTENTION: These pattern pieces are facings! As described later, they will be sewn from the inside against the top edge of the pants.

Cut the pocket bag 2x in double fabric layers. You will get 4 pattern pieces. Finish the raw edges of the pattern pieces.



Sew Azur

Place the first front pants piece with the right side of the fabric facing up in front of you.

Take the first pocket bag.



Place the pocket bag right side down on top of the front pants piece. The upper edge of the pocket bag should align with the top edge of the pants.

Pin the edges together and sew the seam closed.





Flip the pocket bag to the outside. This is how your front pants piece should look now. Repeat the same process with the other front pants piece and the two back pants pieces.

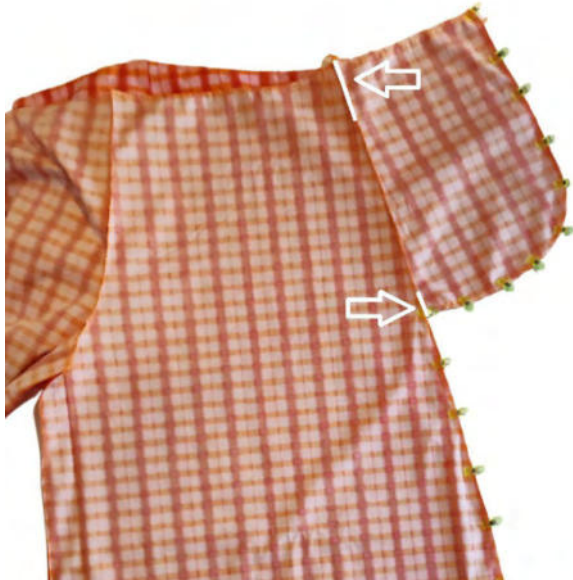


Place the two front pants pieces right sides together on top of each other. Pin the crotch edges together and sew the seam closed. Repeat the same process with the back pants pieces.



Place the back pants piece with the right side of the fabric facing up in front of you. Lay the front pants piece on top of it, right sides together. Pin the side edges together, starting from the outer upper edge of the pocket. Pin around the pocket bag and then down the side edge of the pants legs. Sew the seam closed, and repeat the same process on the other side.

ATTENTION: In this culotte, the front pants piece is wider than the back pants piece!



Close the side seam of the pants from the top edge to the marking on the sewing pattern.

Then, also close the pocket opening starting from the bottom, using a straight stitch on the sewing machine, up to the marking on the sewing pattern.



Now, align the inseam edges together and sew the seam closed.



Smooth out the pocket on the front pants piece.

Pin the upper edges of the pocket and front pants together, and sew the pocket onto the front pants within the seam allowance using a few stitches.

Repeat the same process with the other pocket.



Now, take the front and back waistband facings.

Place the front waistband facing with the right side of the fabric facing up in front of you. Lay the back waistband facing on top of it, right sides together, and pin the short edges together. Sew the seam closed.

Repeat the same process with the other side.

ATTENTION: In this culotte, the front waistband facing is longer than the back waistband facing.



Now, take the culotte again. The waistband facing will be sewn from the inside against the upper edge of the pants, creating the tunnel for the elastic band.



To do this, turn the culotte to the right side of the fabric and place the waistband facing right sides together on the outside around the top edge of the pants.

Sew the seam closed.

Fold the waistband facing to the inside, so that it lies wrong sides together inside the culotte. Press the top edge neatly and secure the facing with a few clips or pins.



Turn the culotte to the left side. The waistband facing is now on the outside. Pin the lower edge of the facing securely all around with pins.



ATTENTION: Leave an opening in the back center, through which you can later insert the elastic band.

Close the seam, sewing all around the waistband facing. Remember to leave the specified opening in the back center to insert the elastic band later.

Cut the elastic band to the desired length (approximately waist measurement - 7cm). Since the elastic band will be topstitched, it needs to be slightly shorter than usual. So, cut the elastic band to be a bit tighter than the current waist size.





Thread the elastic band through the waistband using a safety pin. Ensure that the elastic band is not twisted as you pull it through.



Pin the ends of the elastic band together and sew it into a ring with a few stitches using the sewing machine. This will secure the elastic band and form the waistband of the culotte.



Now, pin and sew the opening in the waistband where you inserted the elastic band. Afterward, close the seam. That's what your culotte looks like now.



Now, topstitch the elastic band twice all around. Pull the elastic band taut while sewing with a straight stitch all around. The elastic band will gather slightly, but not as tightly as before topstitching. Your waistband is now complete and should look like this.



Fold the seam allowance on the first leg of the pants to the inside and stitch it securely. Repeat the same process with the other leg of the pants.



Congratulations! Your culotte is complete. Well done on completing the sewing project! Enjoy wearing your newly made culotte!

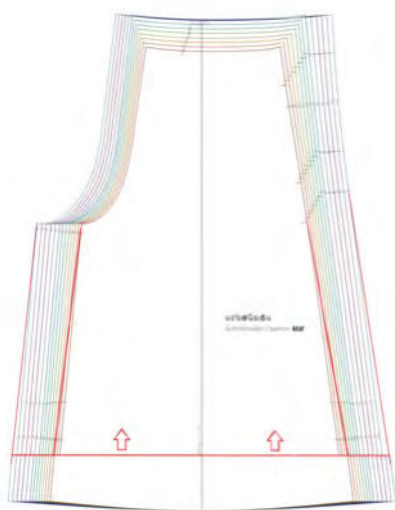


Length Adjustment

Measure the desired inseam length starting from the crotch while wearing the culotte. Transfer this measurement to the sewing pattern.



Cut the pattern piece at the marked point to separate it into two pieces.



Slide the pattern pieces over each other until you reach the desired length for your culotte. Adjust the shape of the side edges, maintaining the curved hemline. This will ensure that the rounded hemline of the culotte is preserved while achieving the perfect length for your preference.

Make sure to check that the front and back pattern pieces match in length. Once you are satisfied with the adjusted length, secure the pattern pieces in place with tape or pins before cutting the fabric to the new length.