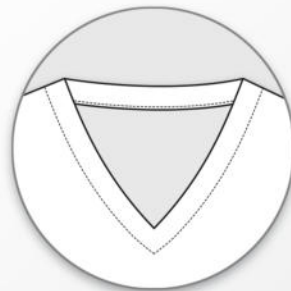


cacau

34 - 58

erbsünde



schnittmuster



sewing pattern

About Cacau

Cacau is a sweater dress with two sleeve options and three collar styles. You can choose between long, slim sleeves or flared trumpet sleeves with cuffed bands. The large V-neck can be sewn with a facing or an overlapping shawl collar. Alternatively, you can opt for the oversized hooded collar. The cut is straight and slightly flared, with optional seam pockets and a kangaroo pocket included in the pattern. Thicker, stretchy fabrics like sweat, French terry, knit jacquard, etc., are suitable for sewing.

Body Measurement Chart

The following chart helps you choose the correct size. The bust measurement is key for selecting the right size. If your hip measurement exceeds the one listed in the chart, you can flare the pattern from the underarm down. Instructions for doing so are available in this tutorial: <https://erbsuende.com/2019/10/17/tutorial-schnittmuster-groessenanpassung/>

Size EU	34	36	38	40	42	44	46	48	50	52	54	56	58
Bust circumference	up to 92cm	up to 96cm	up to 100cm	up to 104cm	up to 108cm	up to 112cm	up to 115cm	up to 120cm	up to 125cm	up to 130cm	up to 135cm	up to 140cm	up to 145cm
Hip circumference	up to 95cm	up to 100cm	up to 105cm	up to 110cm	up to 115cm	up to 120cm	up to 125cm	up to 130cm	up to 133cm	up to 137cm	up to 140cm	up to 145cm	up to 150cm

Fabric Recommendation

Thicker, stretchy fabrics such as sweat, summer sweat, wool fabric or knit jacquard are suitable. If you use thicker or heavier fabric, you should choose a thinner, lighter fabric for the hood lining, such as jersey.

Fabric Requirements for a Fabric Width of 1.45m

The following fabric amounts apply to a Cacau with balloon sleeves and a hood.

Size EU	34	36	38	40	42	44	46	48	50	52	54	56	58
Fabric Length	2m	2m	2m	2,2m	2,2m	2,2m	2,5m	2,5m	2,5m	2,5m	3m	3m	3m

Seam and Hem Allowances

The pattern does not include seam and hem allowances; these must be added individually when cutting.

Required Materials

- Fabric (as recommended above)
- Tape for assembling the pattern
- Scissors, measuring tape, pins, or clips
- Sewing machine, overlock/coverlock (if available), iron

Important Notes

- Before cutting, read the entire instruction manual carefully!
- To correctly open and print the pattern, use the latest version of Adobe Acrobat Reader.
- When printing, ensure the settings are at 100% or "no scaling."

Legal Notice

All rights to this pattern are owned by Ilka Matthiessen, erbsünde. The pattern may be used for personal purposes. For commercial use, a maximum of 20 finished garments can be made and sold without a license. For the commercial production of more than 20 garments, a business license must be purchased in advance at www.erbsuende.com. Mass production of garments made from this pattern is prohibited. Distribution, resale, exchange, copying, printing, or (partial) publication of this pattern are expressly prohibited—violations of copyright will result in substantial fines. When selling garments made from this pattern, the following must be indicated: **Sewn according to a pattern by erbsünde.**



Cutting Out Cacau with Balloon Sleeves and Hood

Fold the fabric wrong sides together. Place the back piece with the "Center Back/Fold" marking along the edge. Cut the back piece once on the fold.



Fold the fabric wrong sides together. Place the front piece with the "Center Front/Fold" marking along the edge. Cut the front piece once on the fold.



Choose the balloon sleeve pattern from the template.

Cut the balloon sleeves once on double fabric layers. You will end up with two mirrored pieces.

Instructions for adjusting the sleeve length, if necessary, are provided at the end of the manual.

Legal Notice

All rights to this pattern are owned by Ilka Matthiessen, erbsünde. The pattern may be used for personal purposes. For commercial use, a maximum of 20 finished garments can be made and sold without a license. For the commercial production of more than 20 garments, a business license must be purchased in advance at www.erbsuende.com. Mass production of garments made from this pattern is prohibited. Distribution, resale, exchange, copying, printing, or (partial) publication of this pattern are expressly prohibited—violations of copyright will result in substantial fines. When selling garments made from this pattern, the following must be indicated: **Sewn according to a pattern by erbsünde.**



Cut the cuff pieces twice on the fabric fold.

If you prefer a tighter fit at the wrist, you can reduce the width of the cuffs. Similarly, you can cut the cuffs wider if desired.



Cut the hood pieces twice on double fabric layers. This will give you two mirrored pieces for each layer.

If you are using very thick or heavy fabric, it is recommended to use a lighter fabric for the inner hood. In this case, cut the hood pieces once from the outer fabric and once from the inner fabric, each on double fabric layers.



Sewing Cacau with Balloon Sleeves and Hood

Place the back piece in front of you with the right side of the fabric facing up.

Legal Notice

All rights to this pattern are owned by Ilka Matthiessen, erbsünde. The pattern may be used for personal purposes. For commercial use, a maximum of 20 finished garments can be made and sold without a license. For the commercial production of more than 20 garments, a business license must be purchased in advance at www.erbsuende.com. Mass production of garments made from this pattern is prohibited. Distribution, resale, exchange, copying, printing, or (partial) publication of this pattern are expressly prohibited—violations of copyright will result in substantial fines. When selling garments made from this pattern, the following must be indicated: **Sewn according to a pattern by erbsünde.**



Now place the front piece right sides together on top of the back piece. Pin the shoulder edges together and sew the shoulder seams.



Lay your dress open in front of you with the right side of the fabric facing up. Now take the first sleeve.



Pin the sleeve right sides together into the armhole. Sew the seam and repeat the process with the other sleeve.

Legal Notice

All rights to this pattern are owned by Ilka Matthiessen, erbsünde. The pattern may be used for personal purposes. For commercial use, a maximum of 20 finished garments can be made and sold without a license. For the commercial production of more than 20 garments, a business license must be purchased in advance at www.erbsuende.com. Mass production of garments made from this pattern is prohibited. Distribution, resale, exchange, copying, printing, or (partial) publication of this pattern are expressly prohibited—violations of copyright will result in substantial fines. When selling garments made from this pattern, the following must be indicated: **Sewn according to a pattern by erbsünde.**



Place the dress right sides together.
Pin the underarm and side edges together,
then sew the seam in one continuous line.
Repeat the process on the other side.



Turn your dress right side out.
This is what the dress looks like now.

If you prefer wide sleeves, simply hem the
sleeves as described on page 24.



Now take the first cuff.

Legal Notice

All rights to this pattern are owned by Ilka Matthiessen, erbsünde. The pattern may be used for personal purposes. For commercial use, a maximum of 20 finished garments can be made and sold without a license. For the commercial production of more than 20 garments, a business license must be purchased in advance at www.erbsuende.com. Mass production of garments made from this pattern is prohibited. Distribution, resale, exchange, copying, printing, or (partial) publication of this pattern are expressly prohibited—violations of copyright will result in substantial fines. When selling garments made from this pattern, the following must be indicated: **Sewn according to a pattern by erbsünde.**

Fold the cuff right sides together and pin the short edges together.
Sew the seam, then repeat the process with the second cuff.



Fold the cuff in half heightwise, wrong sides together (with the seam on the inside).
Mark the quarter points along the open edges.



Gather the sleeve hem to match the width of the cuff.

**Legal Notice**

All rights to this pattern are owned by Ilka Matthiessen, erbsünde. The pattern may be used for personal purposes. For commercial use, a maximum of 20 finished garments can be made and sold without a license. For the commercial production of more than 20 garments, a business license must be purchased in advance at www.erbsuende.com. Mass production of garments made from this pattern is prohibited. Distribution, resale, exchange, copying, printing, or (partial) publication of this pattern are expressly prohibited—violations of copyright will result in substantial fines. When selling garments made from this pattern, the following must be indicated: **Sewn according to a pattern by erbsünde.**



Sew around the sleeve hem within the seam allowance using a long straight stitch on your sewing machine (maximum stitch length).
IMPORTANT: Do not backstitch to secure the seam.



Pull gently on the loose bobbin threads to gather the sleeve hem to match the width of the cuff.



Mark the quarter points on the sleeve hem as well.

Legal Notice

All rights to this pattern are owned by Ilka Matthiessen, erbsünde. The pattern may be used for personal purposes. For commercial use, a maximum of 20 finished garments can be made and sold without a license. For the commercial production of more than 20 garments, a business license must be purchased in advance at www.erbsuende.com. Mass production of garments made from this pattern is prohibited. Distribution, resale, exchange, copying, printing, or (partial) publication of this pattern are expressly prohibited—violations of copyright will result in substantial fines. When selling garments made from this pattern, the following must be indicated: **Sewn according to a pattern by erbsünde.**



Now slide the cuff over the sleeve hem, right sides together. Align the quarter markings and pin them in place. Sew the cuff all the way around using a stretch stitch on your sewing machine or with an overlock.



This is what your sleeve looks like now. Repeat the process with the other sleeve.



This is what your dress looks like now.

Legal Notice

All rights to this pattern are owned by Ilka Matthiessen, erbsünde. The pattern may be used for personal purposes. For commercial use, a maximum of 20 finished garments can be made and sold without a license. For the commercial production of more than 20 garments, a business license must be purchased in advance at www.erbsuende.com. Mass production of garments made from this pattern is prohibited. Distribution, resale, exchange, copying, printing, or (partial) publication of this pattern are expressly prohibited—violations of copyright will result in substantial fines. When selling garments made from this pattern, the following must be indicated: **Sewn according to a pattern by erbsünde.**

Now take the first hood piece and place it in front of you with the right side of the fabric facing up.



Place the second hood piece right sides together on top of the first. Pin the center edges together and sew the seam. Repeat the process with the inner hood.



Turn the inner hood so that the right side of the fabric is facing outward.

**Legal Notice**

All rights to this pattern are owned by Ilka Matthiessen, erbsünde. The pattern may be used for personal purposes. For commercial use, a maximum of 20 finished garments can be made and sold without a license. For the commercial production of more than 20 garments, a business license must be purchased in advance at www.erbsuende.com. Mass production of garments made from this pattern is prohibited. Distribution, resale, exchange, copying, printing, or (partial) publication of this pattern are expressly prohibited—violations of copyright will result in substantial fines. When selling garments made from this pattern, the following must be indicated: **Sewn according to a pattern by erbsünde.**



Place both hoods right sides together, one inside the other.
Pin the front edges together and sew the seam.



Turn the hood right side out.
If you like, you can topstitch the face opening close to the edge.



Now take the hood.
First, place it on the neckline as it will look when fully sewn.

Legal Notice

All rights to this pattern are owned by Ilka Matthiessen, erbsünde. The pattern may be used for personal purposes. For commercial use, a maximum of 20 finished garments can be made and sold without a license. For the commercial production of more than 20 garments, a business license must be purchased in advance at www.erbsuende.com. Mass production of garments made from this pattern is prohibited. Distribution, resale, exchange, copying, printing, or (partial) publication of this pattern are expressly prohibited—violations of copyright will result in substantial fines. When selling garments made from this pattern, the following must be indicated: **Sewn according to a pattern by erbsünde.**



Now align the tips of the hood precisely and secure all fabric layers with a clip.



Pin the overlap securely all the way to the tip.
Make sure to pin all fabric layers properly.



Place the pinned hood, right sides together, along the edge of the neckline.

Legal Notice

All rights to this pattern are owned by Ilka Matthiessen, erbsünde. The pattern may be used for personal purposes. For commercial use, a maximum of 20 finished garments can be made and sold without a license. For the commercial production of more than 20 garments, a business license must be purchased in advance at www.erbsuende.com. Mass production of garments made from this pattern is prohibited. Distribution, resale, exchange, copying, printing, or (partial) publication of this pattern are expressly prohibited—violations of copyright will result in substantial fines. When selling garments made from this pattern, the following must be indicated: **Sewn according to a pattern by erbsünde.**



Pin the hood to the edge of the neckline.



The seam allowance of the hood should slightly extend beyond the neckline.



Sew the pinned section of the hood in place. Be sure to use a simple straight stitch on the sewing machine and NOT the overlock.

Legal Notice

All rights to this pattern are owned by Ilka Matthiessen, erbsünde. The pattern may be used for personal purposes. For commercial use, a maximum of 20 finished garments can be made and sold without a license. For the commercial production of more than 20 garments, a business license must be purchased in advance at www.erbsuende.com. Mass production of garments made from this pattern is prohibited. Distribution, resale, exchange, copying, printing, or (partial) publication of this pattern are expressly prohibited—violations of copyright will result in substantial fines. When selling garments made from this pattern, the following must be indicated: **Sewn according to a pattern by erbsünde.**



Flip the hood over and check that no folds have formed.



Fold the hood back down.
Pin the other edge of the hood, right sides together, to the neckline all the way to the tip.

The hood is highlighted in red in the image.



Make sure to pin all fabric layers securely again.

Legal Notice

All rights to this pattern are owned by Ilka Matthiessen, erbsünde. The pattern may be used for personal purposes. For commercial use, a maximum of 20 finished garments can be made and sold without a license. For the commercial production of more than 20 garments, a business license must be purchased in advance at www.erbsuende.com. Mass production of garments made from this pattern is prohibited. Distribution, resale, exchange, copying, printing, or (partial) publication of this pattern are expressly prohibited—violations of copyright will result in substantial fines. When selling garments made from this pattern, the following must be indicated: **Sewn according to a pattern by erbsünde.**



Flip the pinned hood upward and check that no folds have formed.



Sew the pinned edge in place using the sewing machine, and check again to ensure everything is wrinkle-free.

If a fold has formed at the bottom tip, undo the first seam you sewed and stitch it again smoothly.



Once the tip of the hood is sewn without wrinkles, pin the rest of the hood, slightly stretched, right sides together along the neckline.

Sew the hood all the way around. Again, use the sewing machine and not the overlock.

Legal Notice

All rights to this pattern are owned by Ilka Matthiessen, erbsünde. The pattern may be used for personal purposes. For commercial use, a maximum of 20 finished garments can be made and sold without a license. For the commercial production of more than 20 garments, a business license must be purchased in advance at www.erbsuende.com. Mass production of garments made from this pattern is prohibited. Distribution, resale, exchange, copying, printing, or (partial) publication of this pattern are expressly prohibited—violations of copyright will result in substantial fines. When selling garments made from this pattern, the following must be indicated: **Sewn according to a pattern by erbsünde.**



This is what your sewn-in hood looks like now.



This is what your dress looks like now.



Now fold the hem inward and topstitch it in place.

Legal Notice

All rights to this pattern are owned by Ilka Matthiessen, erbsünde. The pattern may be used for personal purposes. For commercial use, a maximum of 20 finished garments can be made and sold without a license. For the commercial production of more than 20 garments, a business license must be purchased in advance at www.erbsuende.com. Mass production of garments made from this pattern is prohibited. Distribution, resale, exchange, copying, printing, or (partial) publication of this pattern are expressly prohibited—violations of copyright will result in substantial fines. When selling garments made from this pattern, the following must be indicated: **Sewn according to a pattern by erbsünde.**



Your dress with balloon sleeves and a hood is finished!



Cutting Out Cacau with Seam Pockets, Straight Sleeves, and Facing

Fold the fabric wrong sides together. Place the back piece with the "Center Back/Fold" marking along the edge. Cut the back piece once on the fold.



Fold the fabric wrong sides together. Place the front piece with the "Center Front/Fold" marking along the edge. Cut the front piece once on the fold.

Legal Notice

All rights to this pattern are owned by Ilka Matthiessen, erbsünde. The pattern may be used for personal purposes. For commercial use, a maximum of 20 finished garments can be made and sold without a license. For the commercial production of more than 20 garments, a business license must be purchased in advance at www.erbsuende.com. Mass production of garments made from this pattern is prohibited. Distribution, resale, exchange, copying, printing, or (partial) publication of this pattern are expressly prohibited—violations of copyright will result in substantial fines. When selling garments made from this pattern, the following must be indicated: **Sewn according to a pattern by erbsünde.**



Select the straight sleeve pattern from the template.

Cut the sleeves once on double fabric layers. This will give you two mirrored pieces.



Cut the front facing once on the fabric fold.
Cut the back facing once in single fabric layers.



Cut the pocket pieces twice on double fabric layers.
This will give you 4 pieces.



Legal Notice

All rights to this pattern are owned by Ilka Matthiessen, erbsünde. The pattern may be used for personal purposes. For commercial use, a maximum of 20 finished garments can be made and sold without a license. For the commercial production of more than 20 garments, a business license must be purchased in advance at www.erbsuende.com. Mass production of garments made from this pattern is prohibited. Distribution, resale, exchange, copying, printing, or (partial) publication of this pattern are expressly prohibited—violations of copyright will result in substantial fines. When selling garments made from this pattern, the following must be indicated: **Sewn according to a pattern by erbsünde.**



Sewing Cacau with Straight Sleeves, Facing, and Seam Pockets

Take the front piece and the first pocket bag.

Transfer the pocket placement from the pattern onto the front piece.



Place the pocket bag right sides together at the marked position on the front piece. Pin the edges together and sew the seam.



Flip the pocket bag to the outside. This is what your attached pocket bag looks like now.

Legal Notice

All rights to this pattern are owned by Ilka Matthiessen, erbsünde. The pattern may be used for personal purposes. For commercial use, a maximum of 20 finished garments can be made and sold without a license. For the commercial production of more than 20 garments, a business license must be purchased in advance at www.erbsuende.com. Mass production of garments made from this pattern is prohibited. Distribution, resale, exchange, copying, printing, or (partial) publication of this pattern are expressly prohibited—violations of copyright will result in substantial fines. When selling garments made from this pattern, the following must be indicated: **Sewn according to a pattern by erbsünde.**



Repeat the process with the other pocket bag on the front piece, as well as with the two pocket bags for the back piece.



Place the back piece in front of you with the right side of the fabric facing up. Place the front piece on top, right sides together. Pin the shoulder seams together and sew the seams.



Lay your dress open in front of you with the right side of the fabric facing up. Now take the first sleeve.

Legal Notice

All rights to this pattern are owned by Ilka Matthiessen, erbsünde. The pattern may be used for personal purposes. For commercial use, a maximum of 20 finished garments can be made and sold without a license. For the commercial production of more than 20 garments, a business license must be purchased in advance at www.erbsuende.com. Mass production of garments made from this pattern is prohibited. Distribution, resale, exchange, copying, printing, or (partial) publication of this pattern are expressly prohibited—violations of copyright will result in substantial fines. When selling garments made from this pattern, the following must be indicated: **Sewn according to a pattern by erbsünde.**



Pin the sleeve right sides together into the armhole.
Sew the seam and repeat the process with the other sleeve.



Place the dress right sides together.
Pin the underarm and side seams together. The outer edges of the pocket bags are part of the side seam.
Sew the seam in one continuous line.
Repeat the process on the other side.



Turn your dress right side out.
This is what your dress looks like now.

Legal Notice

All rights to this pattern are owned by Ilka Matthiessen, erbsünde. The pattern may be used for personal purposes. For commercial use, a maximum of 20 finished garments can be made and sold without a license. For the commercial production of more than 20 garments, a business license must be purchased in advance at www.erbsuende.com. Mass production of garments made from this pattern is prohibited. Distribution, resale, exchange, copying, printing, or (partial) publication of this pattern are expressly prohibited—violations of copyright will result in substantial fines. When selling garments made from this pattern, the following must be indicated: **Sewn according to a pattern by erbsünde.**

Now take the back facing and place it in front of you with the right side of the fabric facing up.



Place the front facing on top of the back facing, right sides together. Pin the shoulder seams together and sew the seam.



Now take your dress again.



Legal Notice

All rights to this pattern are owned by Ilka Matthiessen, erbsünde. The pattern may be used for personal purposes. For commercial use, a maximum of 20 finished garments can be made and sold without a license. For the commercial production of more than 20 garments, a business license must be purchased in advance at www.erbsuende.com. Mass production of garments made from this pattern is prohibited. Distribution, resale, exchange, copying, printing, or (partial) publication of this pattern are expressly prohibited—violations of copyright will result in substantial fines. When selling garments made from this pattern, the following must be indicated: **Sewn according to a pattern by erbsünde.**

Place the facing right sides together around the neckline of the dress.
Pin the facing all around the neckline.



Sew the facing in place using a straight stitch on the sewing machine.



Carefully clip the seam allowance at the tip of the V-neck.
Make sure not to cut into the seam itself.



Legal Notice

All rights to this pattern are owned by Ilka Matthiessen, erbsünde. The pattern may be used for personal purposes. For commercial use, a maximum of 20 finished garments can be made and sold without a license. For the commercial production of more than 20 garments, a business license must be purchased in advance at www.erbsuende.com. Mass production of garments made from this pattern is prohibited. Distribution, resale, exchange, copying, printing, or (partial) publication of this pattern are expressly prohibited—violations of copyright will result in substantial fines. When selling garments made from this pattern, the following must be indicated: **Sewn according to a pattern by erbsünde.**

Fold the facing inward, press the neckline neatly, and pin the edge in place again.



Topstitch the facing all around the neckline.



The straight sleeves are simply hemmed.



Legal Notice

All rights to this pattern are owned by Ilka Matthiessen, erbsünde. The pattern may be used for personal purposes. For commercial use, a maximum of 20 finished garments can be made and sold without a license. For the commercial production of more than 20 garments, a business license must be purchased in advance at www.erbsuende.com. Mass production of garments made from this pattern is prohibited. Distribution, resale, exchange, copying, printing, or (partial) publication of this pattern are expressly prohibited—violations of copyright will result in substantial fines. When selling garments made from this pattern, the following must be indicated: **Sewn according to a pattern by erbsünde.**



Fold the seam allowance of the first sleeve inward and topstitch it in place.
Repeat the process with the other sleeve.



Hem the dress as described above.
Your dress with seam pockets, facing, and straight sleeves is now finished!

Cutting and Sewing Cacau with Shawl Collar

Cut the dress as described above.

Cut the collar once on the fabric fold.



Legal Notice

All rights to this pattern are owned by Ilka Matthiessen, erbsünde. The pattern may be used for personal purposes. For commercial use, a maximum of 20 finished garments can be made and sold without a license. For the commercial production of more than 20 garments, a business license must be purchased in advance at www.erbsuende.com. Mass production of garments made from this pattern is prohibited. Distribution, resale, exchange, copying, printing, or (partial) publication of this pattern are expressly prohibited—violations of copyright will result in substantial fines. When selling garments made from this pattern, the following must be indicated: **Sewn according to a pattern by erbsünde.**

Sew the dress together as described above.

Now take the collar.
First, place it on the neckline as it will look once fully sewn.



Align the tips of the collar exactly together and secure all fabric layers with a clip.



Pin the collar securely all the way to the tip.
Make sure to pin all fabric layers firmly in place.



Legal Notice

All rights to this pattern are owned by Ilka Matthiessen, erbsünde. The pattern may be used for personal purposes. For commercial use, a maximum of 20 finished garments can be made and sold without a license. For the commercial production of more than 20 garments, a business license must be purchased in advance at www.erbsuende.com. Mass production of garments made from this pattern is prohibited. Distribution, resale, exchange, copying, printing, or (partial) publication of this pattern are expressly prohibited—violations of copyright will result in substantial fines. When selling garments made from this pattern, the following must be indicated: **Sewn according to a pattern by erbsünde.**



Place the pinned collar, right sides together, along the edge of the neckline.



Pin the collar in place.
The seam allowance of the collar should slightly extend beyond the neckline.



Sew the pinned section of the collar in place. Be sure to use a simple straight stitch on the sewing machine and NOT the overlock.

Legal Notice

All rights to this pattern are owned by Ilka Matthiessen, erbsünde. The pattern may be used for personal purposes. For commercial use, a maximum of 20 finished garments can be made and sold without a license. For the commercial production of more than 20 garments, a business license must be purchased in advance at www.erbsuende.com. Mass production of garments made from this pattern is prohibited. Distribution, resale, exchange, copying, printing, or (partial) publication of this pattern are expressly prohibited—violations of copyright will result in substantial fines. When selling garments made from this pattern, the following must be indicated: **Sewn according to a pattern by erbsünde.**



Flip the collar over and check that no folds have formed.



Fold the collar back down.
Pin the other edge of the collar, right sides together, to the neckline all the way to the tip.



Make sure to pin all fabric layers securely again.

Legal Notice

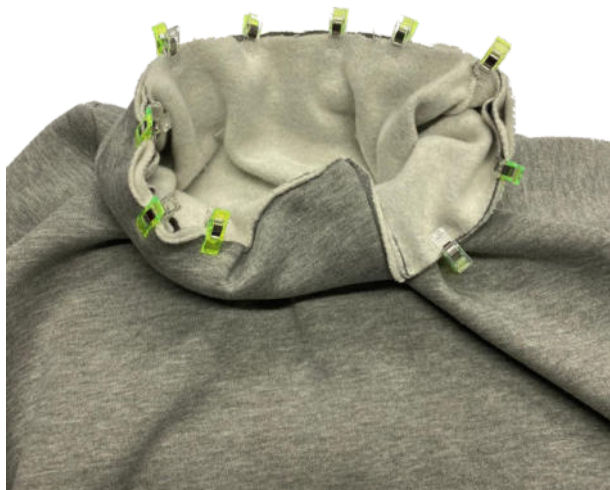
All rights to this pattern are owned by Ilka Matthiessen, erbsünde. The pattern may be used for personal purposes. For commercial use, a maximum of 20 finished garments can be made and sold without a license. For the commercial production of more than 20 garments, a business license must be purchased in advance at www.erbsuende.com. Mass production of garments made from this pattern is prohibited. Distribution, resale, exchange, copying, printing, or (partial) publication of this pattern are expressly prohibited—violations of copyright will result in substantial fines. When selling garments made from this pattern, the following must be indicated: **Sewn according to a pattern by erbsünde.**



Flip the pinned collar upwards and check that no folds have formed.

Sew the pinned edge in place with the sewing machine, and check again to ensure everything is smooth and wrinkle-free.

If a fold has formed at the bottom tip, undo the first seam you sewed and stitch it again to make it smooth.



Once the tip of the collar is sewn without wrinkles, pin the rest of the collar, slightly stretched, right sides together along the neckline.



Sew the collar all the way around. Again, use the sewing machine and not the overlock.

Legal Notice

All rights to this pattern are owned by Ilka Matthiessen, erbsünde. The pattern may be used for personal purposes. For commercial use, a maximum of 20 finished garments can be made and sold without a license. For the commercial production of more than 20 garments, a business license must be purchased in advance at www.erbsuende.com. Mass production of garments made from this pattern is prohibited. Distribution, resale, exchange, copying, printing, or (partial) publication of this pattern are expressly prohibited—violations of copyright will result in substantial fines. When selling garments made from this pattern, the following must be indicated: **Sewn according to a pattern by erbsünde.**



This is what your collar looks like now. Press the collar with plenty of steam for a crisp finish.

Then hem the dress as described above.



Cutting and Sewing the Kangaroo Pocket

Fold the fabric wrong sides together. Place the pocket piece with the "Center Front/Fabric Fold" marking along the edge and cut it once on the fabric fold.



This is what your kangaroo pocket looks like when unfolded.

Legal Notice

All rights to this pattern are owned by Ilka Matthiessen, erbsünde. The pattern may be used for personal purposes. For commercial use, a maximum of 20 finished garments can be made and sold without a license. For the commercial production of more than 20 garments, a business license must be purchased in advance at www.erbsuende.com. Mass production of garments made from this pattern is prohibited. Distribution, resale, exchange, copying, printing, or (partial) publication of this pattern are expressly prohibited—violations of copyright will result in substantial fines. When selling garments made from this pattern, the following must be indicated: **Sewn according to a pattern by erbsünde.**

Place the kangaroo pocket with the wrong side facing up.
Fold the seam allowance of the pocket openings inward and topstitch them in place.



This is what your kangaroo pocket looks like now.

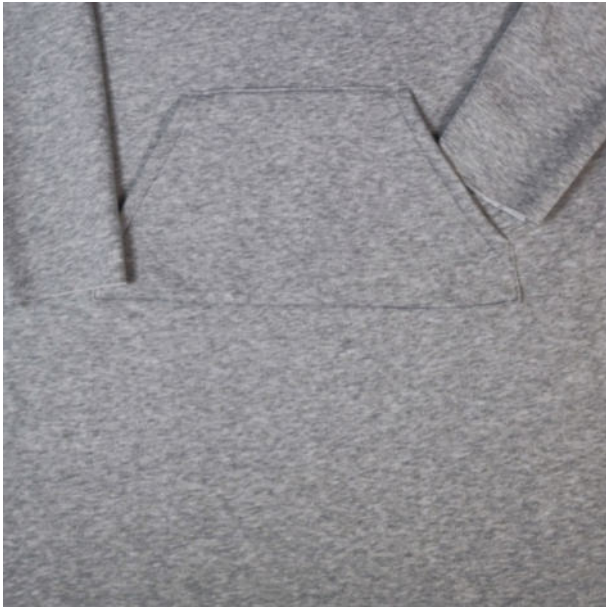


Mark the desired position of the kangaroo pocket on the front piece.
Pin the pocket in place at the marked position.
Make sure not to pin the pocket openings.



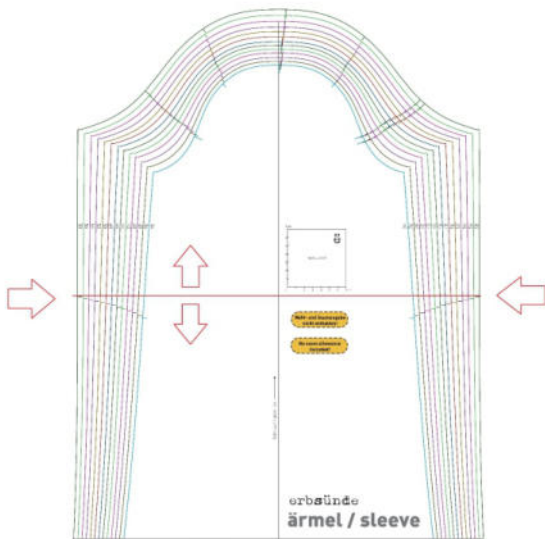
Legal Notice

All rights to this pattern are owned by Ilka Matthiessen, erbsünde. The pattern may be used for personal purposes. For commercial use, a maximum of 20 finished garments can be made and sold without a license. For the commercial production of more than 20 garments, a business license must be purchased in advance at www.erbsuende.com. Mass production of garments made from this pattern is prohibited. Distribution, resale, exchange, copying, printing, or (partial) publication of this pattern are expressly prohibited—violations of copyright will result in substantial fines. When selling garments made from this pattern, the following must be indicated: **Sewn according to a pattern by erbsünde.**



Sew the kangaroo pocket onto the front piece using a straight stitch on the sewing machine.

Your kangaroo pocket is now finished. Now, complete the rest of the dress as described above.



Shortening or Lengthening Sleeves

If you want to shorten or lengthen the sleeves, cut the sleeve pattern at the elbow marking. To shorten, slide the sleeve pieces together to your desired length. If you want to lengthen, spread the two pieces apart until you reach the desired length. In this case, tape a piece of paper between the pieces to connect them. Then, adjust the side edges of the pattern to match.

Legal Notice

All rights to this pattern are owned by Ilka Matthiessen, erbsünde. The pattern may be used for personal purposes. For commercial use, a maximum of 20 finished garments can be made and sold without a license. For the commercial production of more than 20 garments, a business license must be purchased in advance at www.erbsuende.com. Mass production of garments made from this pattern is prohibited. Distribution, resale, exchange, copying, printing, or (partial) publication of this pattern are expressly prohibited—violations of copyright will result in substantial fines. When selling garments made from this pattern, the following must be indicated: **Sewn according to a pattern by erbsünde.**