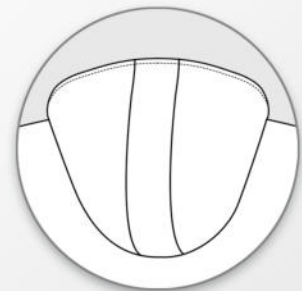
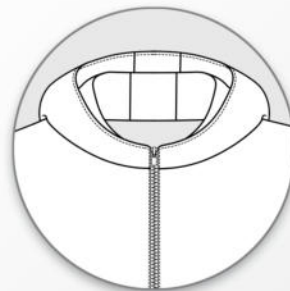
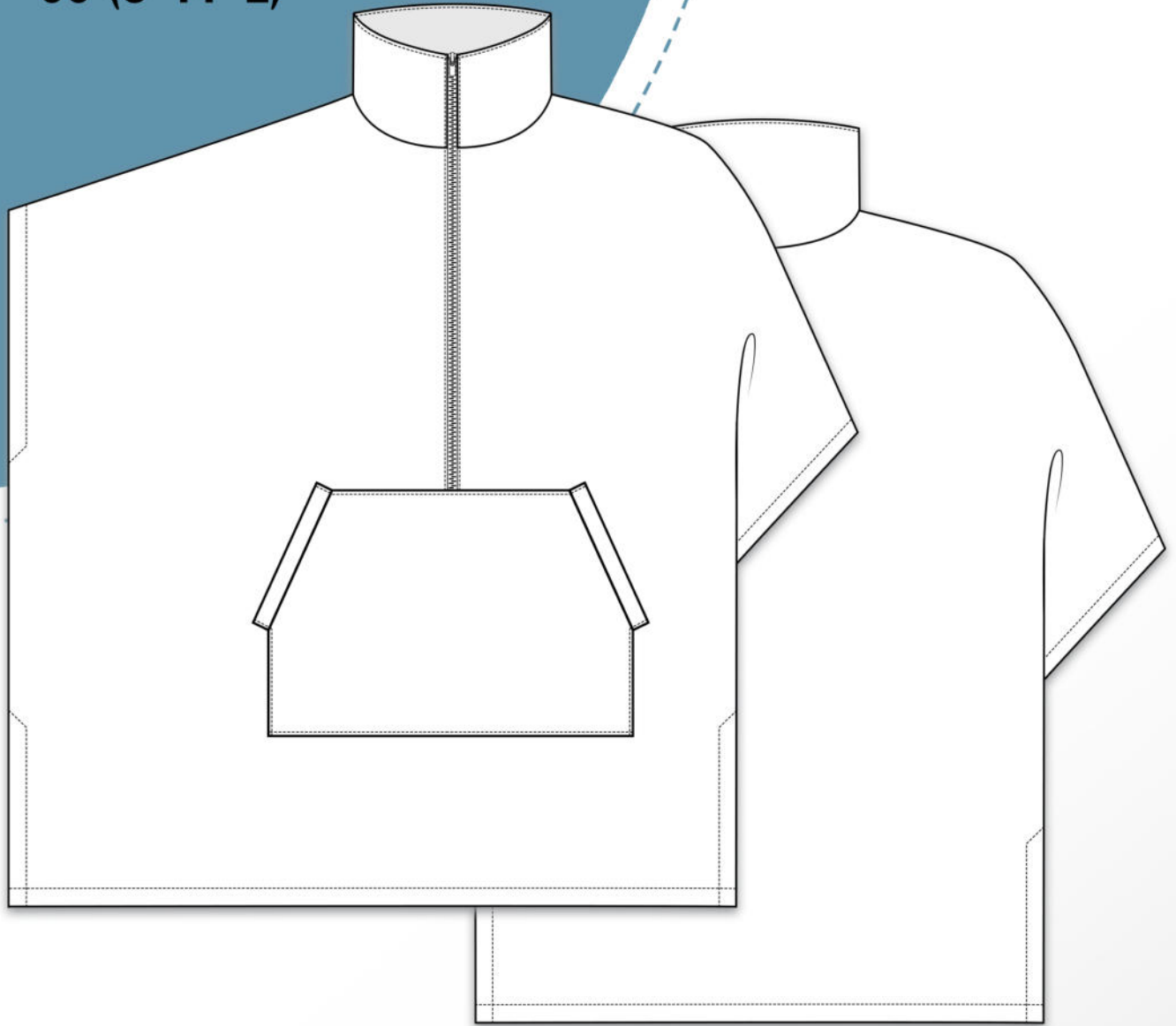


hera

34 - 60 (S-M-L)

erbsünde



schnittmuster

ë

sewing pattern

Foreword

I am very delighted that you have chosen a pattern from erbsünde.

Since 2013, I have poured a lot of heart and soul into creating patterns for women, men, and children. No body is shaped like another and often, store-bought clothing doesn't fit optimally. We want to move away from run-of-the-mill outfits and towards individual tops, dresses, jackets, coats, and pants, that can be made from self-chosen fabrics – even in larger sizes and shorter or longer lengths. Every pattern can be adjusted as desired and is very versatile due to numerous variants.

With this pattern, you enhance your wardrobe with favorite garments that make you feel comfortable and beautiful and accompany you throughout your day.

The detailed, illustrated instructions help you with the making - step-by-step from cutting the fabric to completing the bag. Certainly, there are some things you have not yet tried, but you can also learn with the help of the instructions and further perfect your hobby – sewing.

On my website at www.erbsuende.com (there: DIY), you will find numerous tutorials and instructions for pattern modifications.

If you have any questions, feel free to send me an email at info@erbsuende.com.

I wish you a lot of joy with your new pattern,

Your Ilka

Imprint

© erbsünde

Ilka Matthiessen

Year of Publication: 2024

Author/Creator/Copyright holder: Ilka Matthiessen

Editing/Proofreading: Ilka Matthiessen



This work, including its parts, is protected by copyright and may not be shared. Any use without the consent of the author is prohibited and expressly forbidden. This applies in particular to (even partial) electronic or other reproduction, translation, distribution, and public accessibility. All rights reserved by Ilka Matthiessen erbsünde Karlsbader Str. 8 80937 Munich, Germany info@erbsuende.com

Hera

Table of Contents

Title	
Foreword, Imprint	
Material Sheet: Fabric quantity, required materials, important notes	1
Cutting Hera with a collar	2 - 3
Sewing Hera with a collar	3 - 20
Cutting Hera with a hood	21 - 22
Sewing Hera with a hood	22 - 30



About hera

Hera is a cozy oversized poncho with a zipper, a large front pocket, and side slits. It can be sewn with a high stand-up collar or a lined hood. Made from cuddly, warm wool fabrics or fleece, Hera can be worn both outdoors and at home.

Size recommendation

The table serves as a guideline for size selection. However, you can also choose to sew a larger size if you want a big, super cozy poncho.

Pattern Size	S	M	L
Size EU	34 - 40	42 - 48	50 - 60
Chest Circumference	86cm - 102cm	103cm - 121cm	122cm - 150cm

Fabric recommendation

Suitable fabrics include wool fabrics, coat fabrics, boiled wool, fleece fabrics, etc.

Fabric quantity for a fabric width of 1.45m

2.5m at full fabric width for all sizes

Seam- and Hem allowances

The pattern does not include seam and hem allowances, which should be added individually when cutting. We recommend a 2cm hem allowance.

Required materials

- Fabric (see above)
- Zipper, 60cm long, non-separable or continuous
- Possibly some interfacing to reinforce the fabric at the zipper
- Scissors, measuring tape, pins or clips
- Sewing machine, overlock/coverlock (if available), iron

When choosing the zipper color, please note that it will be visible inside when you fully open the zipper.

Important Notes

- Before cutting, please read the entire instructions!
- The pattern does not include seam and hem allowances.
- To correctly open and print the pattern, please use the latest Adobe Acrobat Reader
- When setting up the printing, make sure to use either 100% or "no scaling" to ensure accurate printing.



Cut Hera with Collar

Fold your fabric right sides together. Place the pattern piece with the high neckline for the back piece with the marking "front and back center / fabric fold" along the edge and cut the back piece 1x on the fabric fold.

We recommend a seam allowance of 2cm on the side edges.

If you are using a fabric that frays at the edges, make sure to finish all fabric edges with a sewing machine or an overlock.



Next, cut out the front neckline from your pattern piece and also cut the front piece 1x on the fabric fold.

If you are using a fabric that frays at the edges, make sure to finish all fabric edges with a sewing machine or an overlock.



Cut the collar piece 1x on the fabric fold.

If you are using a fabric that frays at the edges, make sure to finish all fabric edges with a sewing machine or an overlock.



Cut the belly pocket 1x on the fabric fold.

If you are using a fabric that frays at the edges, make sure to finish all fabric edges with a sewing machine or an overlock.



The strip for the belly pocket is cut 1x in double fabric layers.

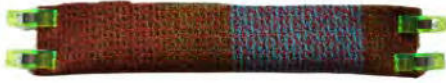
If you are using a fabric that frays at the edges, make sure to finish all fabric edges with a sewing machine or an overlock.



Sew Hera with a collar

First, prepare the belly pocket. Take the first strip and place it with the right side facing up in front of you.

Fold the strip in half in height, right sides together, and pin the short edges together.
Close the seams.



Turn the strip to the right side of the fabric. The seams are on the inside.

Repeat the process with the other strip.



Now, take the pocket and place it unfolded with the right side of the fabric facing up in front of you.

Now, sew the strip to the pocket opening.



Pin the strip right sides together with the slanted edge of the pocket. Stitch the seam and repeat the process with the other strip.



Fold the strips upwards. Your belly pocket will now look like this.





Then take the front piece of the poncho.
Transfer the position of the belly pocket
from the pattern to the front piece.



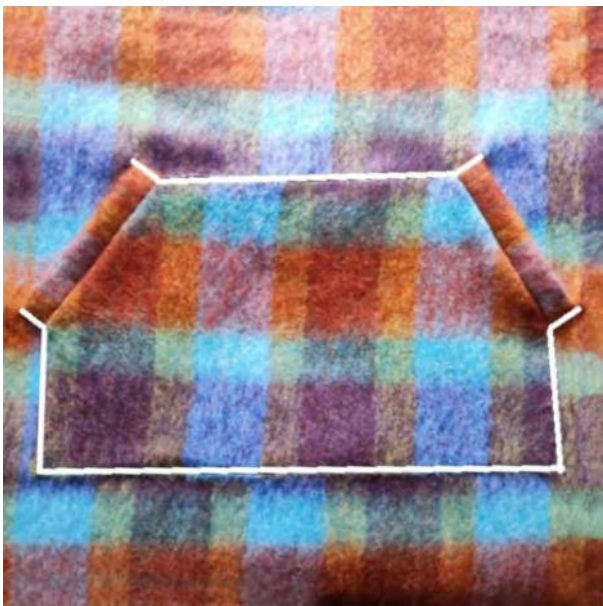
Place the belly pocket in the marked
position on the front piece.



Fold the seam allowance on the
remaining open edges of the belly
pocket to the inside and pin the pocket
all around.



Make sure NOT to pin the pocket openings!



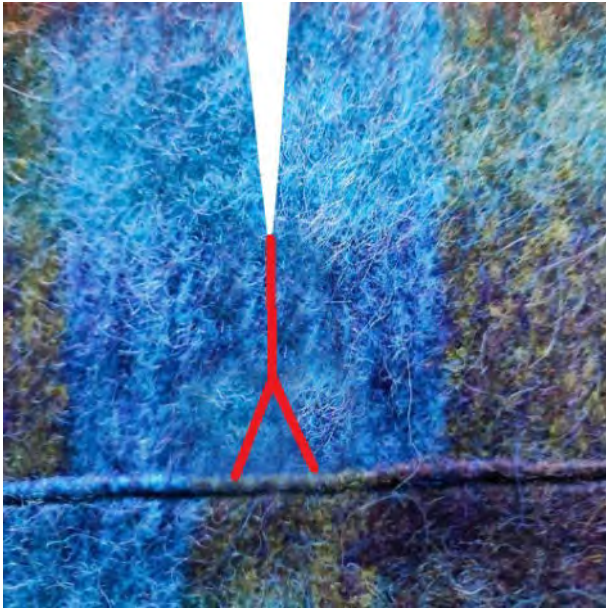
Sew the pocket securely along the edges, making sure to stitch the short side edges of the pocket tabs as well.



Prepare the zipper.

If you are using thinner fabric or your fabric frays, reinforce the fabric on the wrong side in the area of the zipper with a strip of fusible interfacing before cutting it.

Cut the poncho vertically in the front center - starting from the neckline - straight down. The cut should end 1.5 cm above the pocket.



The lower 1.5 cm of the slit for the zipper should be cut diagonally to the right and left, as shown in the picture.



This creates a triangle or point at the bottom of the slit..



Place the prepared front piece with the right side of the fabric facing up in front of you.

Place the back piece right sides together on top of it.

Pin the shoulder edges of one side together and sew the seam. Repeat the same process with the other shoulder edges.



Here's how your poncho should look now.



Now take the collar.

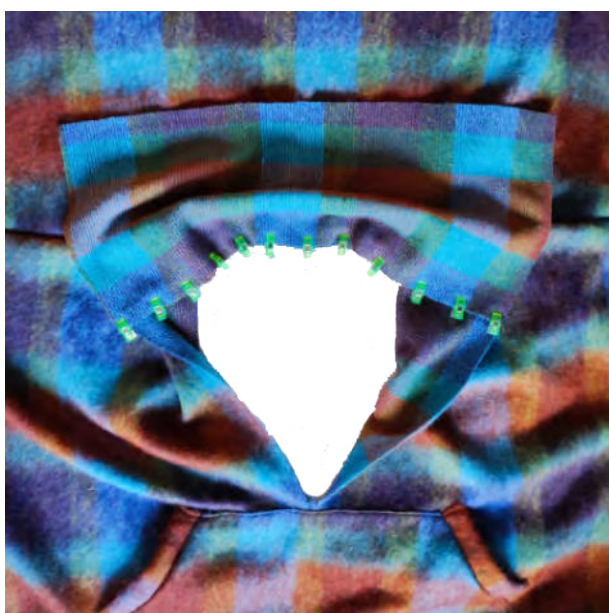




Lay the poncho open with the right side of the fabric facing up in front of you.



Attach the collar, unfolded, right sides together, to the neckline.



Pin the collar along the entire length of the neckline, aligning the edges of the collar with the edges of the slit. Close the seam.

Now your poncho with the collar flipped up should look like this.



Mark the center of the height of the collar on the front edges.

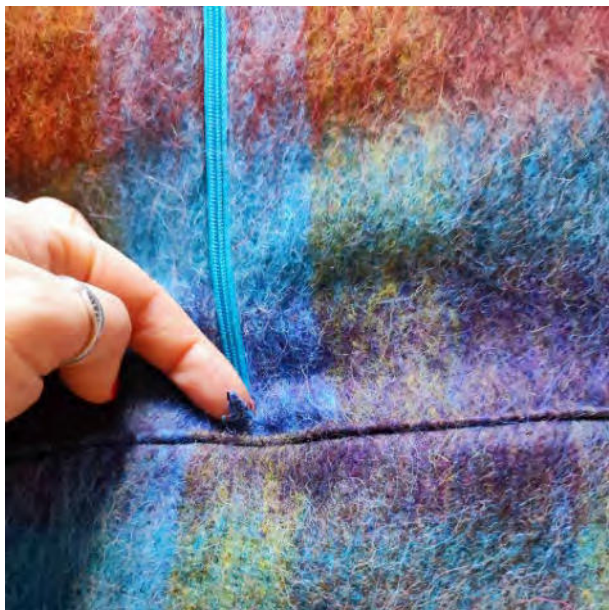


Take the zipper and pin it right sides together to the first edge of the slit. Sew the zipper in place with the zipper foot of the sewing machine. The zipper is sewn at the top only up to the center mark of the collar - and down to the end of the slit.





Turn the poncho to the right side. Repeat the process with the other side of the zipper, sewing it in place as described above.



Turn the poncho to the right side. The small triangle at the bottom of the zipper should be on top of the zipper.



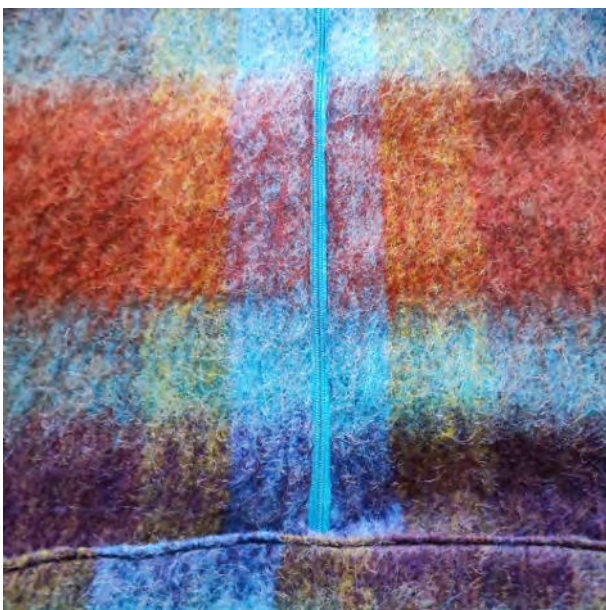
Fold the front part of the poncho at the bottom of the zipper upwards, and tuck the triangle at the bottom of the zipper inside.



The triangle is now sewn onto the zipper.



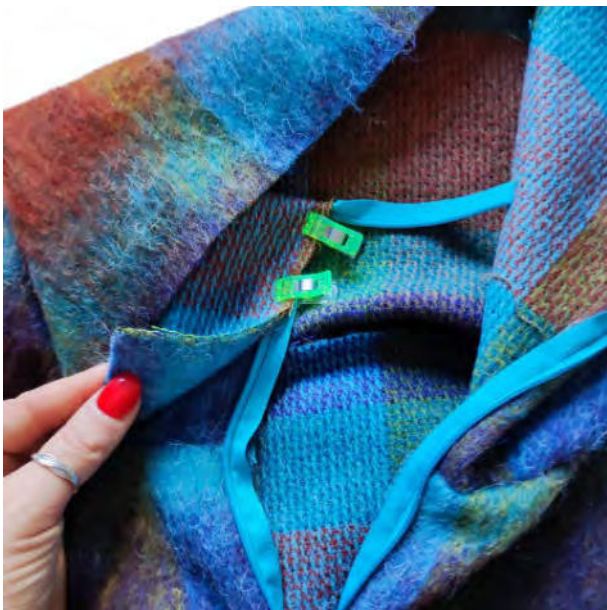
Now the sewn/fixed triangle looks like this.



Fold the front part down again.
This is how your sewn zipper looks from
the right side of the fabric.



Now, let's finish the top end of the zipper.



Fold the collar in half heightwise so that it is right sides together. The zipper is sandwiched between the two layers of fabric.
The seam allowance of the open collar edge extends slightly beyond the neck seam.



Pin the collar in place and sew the seam closed.



Now you can trim the excess end of the zipper about 1cm behind the seam.



Turn the collar so that it's inside out, with the zipper neatly enclosed between both layers of fabric.

Now repeat the same process with the other side of the zipper.



This is what your poncho looks like with a collar and zipper now.



Now, the inner, still loose lower edge of the collar is pinned to the seam allowance of the neck seam.



Make sure to catch all 3 layers of fabric. Close the seam.



This is how your collar looks now.



Now the side edges need to be closed and hemmed. To do this, transfer the markings from the pattern to the side edges of the front piece. The upper marking in the pattern indicates the armhole, while the lower one indicates the height of the side slit.



You can, of course, choose the size of the armhole according to your preference. To do this, put the poncho on and check the width of the sleeve opening. Adjust it as necessary. Then turn the poncho inside out.



Pin the front and back pieces together right sides facing within the markings.

Close the seam with a generous seam allowance of 2 cm (the seam allowance will later become part of the armhole hem). The poncho is ONLY sewn together between the markings. Above (armhole) and below (side slit) it remains open.

Repeat the same on the other side.



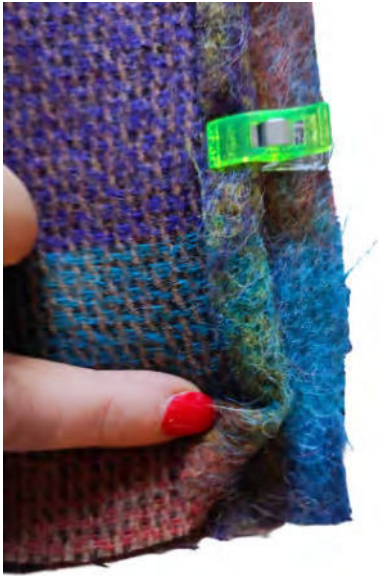
Above the sewn section, the armhole is now hemmed. Fold the seam allowance 2 cm inwards and pin it in place.



The folded seam allowance seamlessly merges into the seam allowance of the side seam. Hem the armhole and repeat the process on the other side.



Below the sewn portion, the poncho is also hemmed. To do this, fold the seam allowance on the vertical edge as described above.



Then fold a mitered corner at the bottom. Fold the corner of the fabric inward to do this.



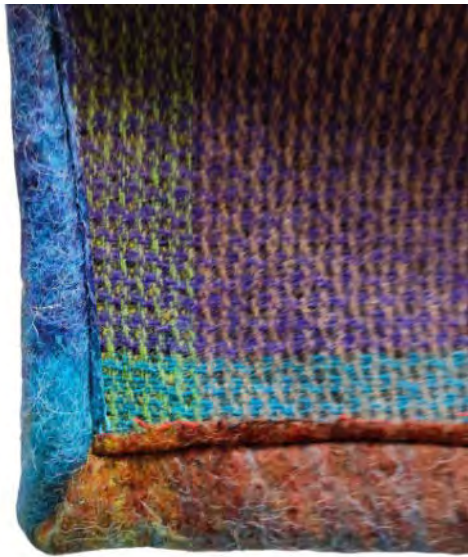
Then fold up the bottom edge of the poncho and pin everything securely in place.



Hem the poncho.



This is what your hemmed poncho looks like from the right side of the fabric.



This is what the hemmed corner looks like from the wrong side of the fabric.

Your poncho is finished.



**Cut Hera with hood**

Fold your fabric with the wrong sides together. Place the pattern piece with the high neckline for the back piece with the marking 'front and back center / fabric fold' at the edge and cut out the back piece 1x on the fabric fold.



Then cut out the front neckline from the pattern piece and also cut out the front piece 1x on the fabric fold.



Cut the belly pocket 1x on the fabric fold.

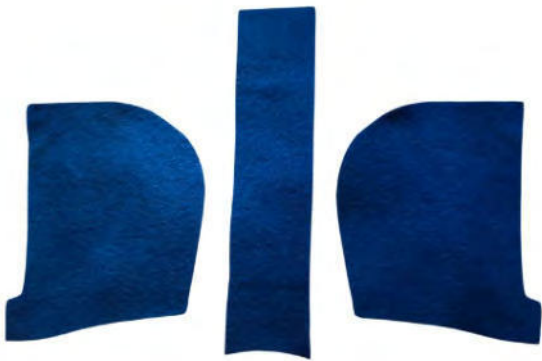
The strip is cut 1x in double fabric layers.



Cut the hood 2x in double fabric layers.

Cut the hood strip 1x in double fabric layers.

If you want to line the hood with a contrasting fabric, cut the hood 1x each in double fabric layers of inner and outer fabric. The hood strip is then cut 1x each in single fabric layers of inner and outer fabric.



Sew Hera with hood

Take the outer hood in your hand. It consists of two mirror-image hood pieces and a hood strip.



Pin the hood strip right sides together to the crown edge of the first hood piece.

Close the seam.



Repeat the same with the second hood piece. Also, pin it right sides together to the still open edge of the hood strip.

This is how the hood looks from the left fabric side.

Repeat the same with the inner hood.



Turn the inner hood so that the right side of the fabric is on the outside.





Insert both pieces into each other - right sides together.
Then pin the edges of the face opening together.
CAUTION: The short, vertical edges of the hoods (hood bridge) remain open!

Turn the hood right side out.
This is how the lined hood looks now.



The short, vertical edges (collar bridge) are open.



Now sew the poncho together as described above, except for the hood, and prepare the front opening as described above. Turn the poncho right side out and take the hood in your hand.



Pin the bottom edge of the outer hood right sides together to the neckline of the poncho.



ATTENTION: ONLY pin the outer hood to the neckline. The inner hood remains loose for now.



Close the seam.
This is how your poncho looks now.



Now take the zipper in your hand.



Pin the zipper right sides together to
the first edge of the neckline.





Only pin the zipper up to the seam connecting the two hood face openings. The inner hood remains free.



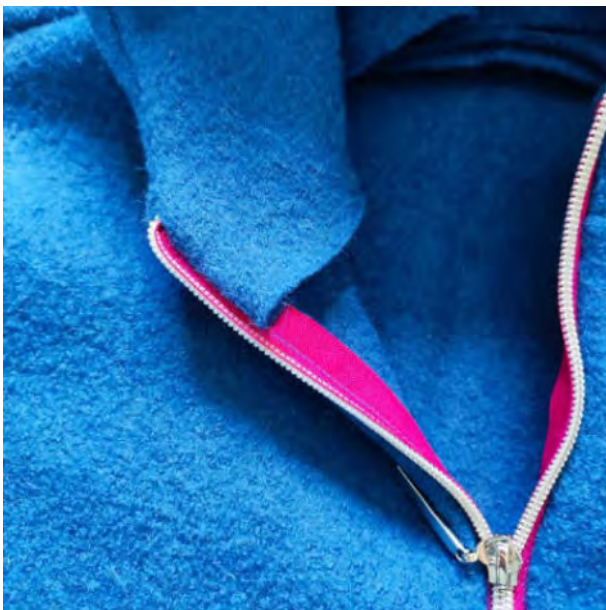
Sew the zipper in as described above.



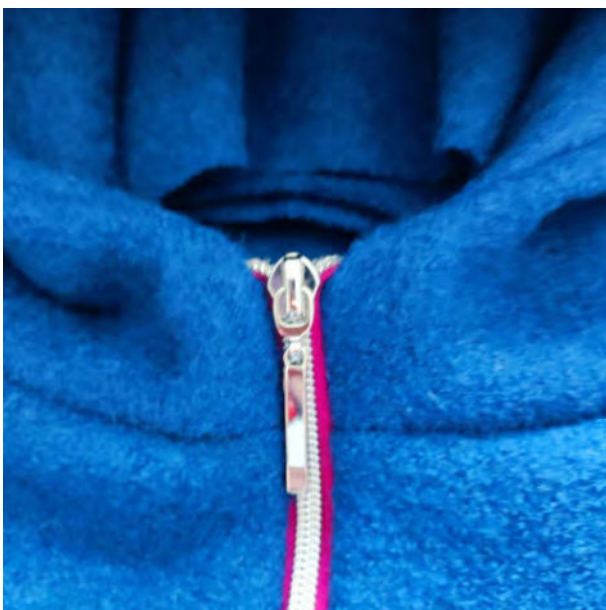
Now fold the upper end of the zipper down to the side and pin it in place.



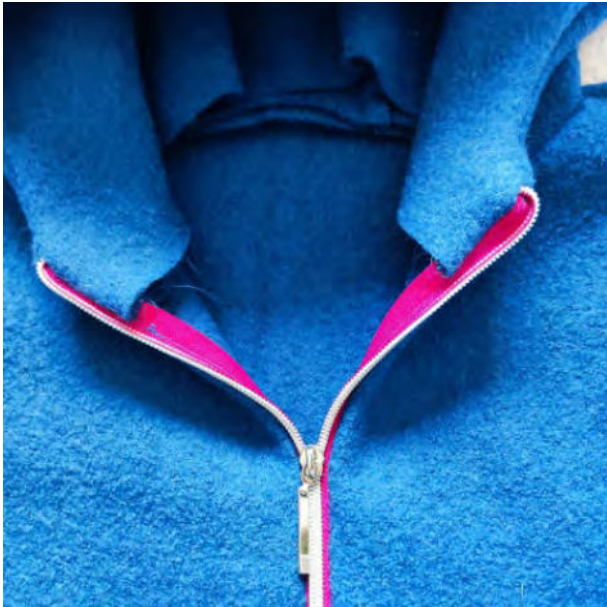
Then fold the loose piece of the inner hood right sides together over the zipper.
Pin the edge and sew the seam.
Repeat the same on the other side.



Turn the hood. The zipper is now neatly sewn between both fabric layers.



This is how your upper edge of the zipper looks now.



Now sew the bottom edge of the inner hood in place.



For this, pin the bottom edge of the inner hood to the seam allowance of the neck seam.



Make sure to pin all 3 layers of fabric together.
Close the seam.



This is how your poncho with hood looks now. Now, edge stitch the face opening of the hood and finish sewing the poncho as described above.

Your poncho with hood is complete.

