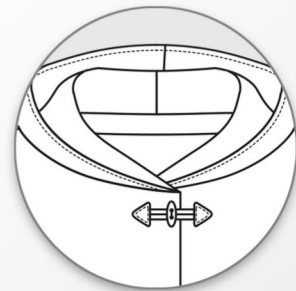


jovem

62 - 164

erbsünde



schnittmuster



sewing pattern

Foreword

Thank you for choosing an ebook from erbsünde.

Since 2013, I have poured a lot of passion into creating sewing patterns for custom-made clothing. Moving away from ordinary outfits and towards unique tops, dresses, skirts, and pants that can be sewn from personally chosen fabrics. Each pattern offers numerous variations to explore.

Children's clothing should not only look beautiful but also be comfortable, practical, and allow for ample movement. As a mother of three, I understand the importance of these aspects. With this ebook, you are expanding your child's or grandchild's wardrobe with favorite pieces that provide comfort throughout the day.

The detailed, illustrated instructions will guide you through the process, step by step, from cutting the fabric to completing the garment. There might be some techniques you haven't tried before, but with the help of the instructions, you can learn and further perfect your sewing hobby.

On my website at www.erbsuende.com (under "DIY"), you'll find numerous tutorials and guides for pattern hacks and pattern modifications. If you have any questions, feel free to email me at info@erbsuende.com.

I wish you much joy with your new ebook,
Yours, Ilka

Imprint

© erbsünde Ilka Matthiessen

Year of Publication: 2021

Author/Creator/Owner of Rights: Ilka Matthiessen

Editing/Proofreading: Ilka Matthiessen

This work, including its parts, is protected by copyright. Any use without the author's consent is prohibited and expressly forbidden. This applies especially to (even partial) electronic or other reproduction, translation, distribution, dissemination, and public accessibility.

All rights belong to

.
Ilka Matthiessen
erbsünde
Karlsbader Str. 8
80937 Munich
Germany
info@erbsuende.com



jovem

Table of contents

Material Sheet: Fabric Recommendation, Required Materials, Important Notes	1
Cut Jovem	2 - 3
Sew Jovem	3 - 11



About Jovem

Jovem is a transitional jacket for kids, made from stretchy materials like sweatshirt fabric, boiled wool, fleece, and so on. It features a large hood, and the front parts overlap and can be fastened with buttons, snap buttons, or toggle closures. The sleeves are slim and cut longer than usual, allowing them to be rolled up. The jacket is meant to be worn over long-sleeve jersey shirts or thin sweaters. If you want the jacket to be warmly lined or worn over a thicker sweater, then widen the sleeves towards the hem. Instructions on how to do this are provided in the manual.

Fabric Recommendation

For Jovem, all thicker, at least slightly stretchable fabrics are suitable, such as sweatshirt fabric, knit, fleece, boiled wool, etc.

Jovem as a simply lined jacket or reversible jacket

If you want to sew a reversible jacket, you can find a free tutorial on erbsuende.com under "DIY" - "erbsünde Pattern Hacks"

The required amount of fabric for a fabric width of 145cm

In the following table, you will find the required fabric amount for the jacket. If you want to sew a reversible jacket, you will need twice the amount of fabric for the jacket.

FL = Fabric Length

Size EU	62/68	74/80	86/92	98/104	110/116
FL Jacket	40cm	50cm	60cm	70cm	80cm
Hood lining	40cm x 30cm	40cm x 30cm	60cm x 40cm	60cm x 40cm	60cm x 40cm
Size EU	122/128	134/140	146/152	158/164	
FL Jacket	100cm	110cm	120cm	130cm	
Hood lining	80cm x 50cm	80cm x 50cm	100cm x 50cm	100cm x 50cm	

Required Materials

- Fabric (as mentioned above)
- 4 buttons, 2-4 pairs of toggle buttons, or 4 pairs of snaps for closing the jacket
- Ribbon or webbing to conceal the hood seam
- Scissors, measuring tape, pins or clips
- Tape for assembling the pattern
- Sewing machine, overlock/coverlock machine (if available)
- Iron

Important Notes

- Before cutting, please read through the entire instructions first!
- The pattern does not include seam and hem allowances.
- Choose a stretch stitch on your sewing machine or use the overlock/coverlock machine for all seams.
- To properly open and print the pattern, please use Adobe Acrobat Reader. It can be downloaded for free.
- When setting up the printing, make sure either 100% or 'no scaling' is selected.

Legal Notices: All rights to this pattern are owned by Ilka Matthiessen, erbsünde. The pattern may be used for personal purposes only. For commercial use of the pattern, a maximum of up to 20 finished garments may be made and sold without a license. For commercial production of more than 20 garments, a commercial license must be acquired from www.erbsuende.com. Mass production of garments made from this pattern is prohibited. The distribution, resale, exchange, copying, reproduction, or (partial) publication of this pattern is strictly prohibited - violations of copyright will result in severe monetary penalties. When selling garments made from this pattern, it must be indicated: Sewn using a pattern from erbsünde.

®

Cut Jovem



Fold your fabric right sides together and place the pattern piece for the back bodice with the mark 'Center Back/Fold' along the fold of the fabric. Cut the back piece once on the fold.

The front piece will be cut once on a double layer of fabric, resulting in two mirror-image pieces



Cut the sleeves once on a double layer of fabric to get two mirror-image pieces.

Directly mark the front side of the sleeves so you sew them on correctly later. Also, transfer the notches to the sleeves and armholes of both the front and back pieces of the jacket. This will make it easier for you to evenly attach the sleeves to the armholes later on.



The sleeves are cut slim. If you want to sew a reversible jacket with inner fabric or if a thicker sweater will be worn underneath, you can cut the sleeves slightly wider from the underarm seam onward, as indicated on the left in the image.



Place the pattern piece for the hood once on a double layer of fabric - this will give you two mirror-image pattern pieces.

The hood lining should also be cut once on a double layer of fabric to get two mirror-image pieces.

Sew Jovem



Now place the back piece with the right side of the fabric facing up in front of you, and place the first front piece on top of it, right sides together. Match up the shoulder edges and pin them together, then sew the seam.

Repeat this process with the second front piece



Next, lay the jacket with the right side of the fabric facing up.

Place the first sleeve in the correct orientation in front of it: the front side of the sleeve should be facing the front side of the jacket.



Then fold the sleeve upward so that the curved part of the sleeve aligns right sides together with the armhole.



Now pin the sleeve all around to secure it and sew the seam. You will sew in the second sleeve in the same way. The underarm and side seams of the jacket are still open.



Turn the jacket inside out, so that the right sides of the fabric are facing each other, and the wrong sides are on the outside.

Match up the underarm and side edges and sew the seam - starting from the wrist down to the hem - in one continuous stitch. Make sure the underarm seams align.

Sew the other side seam in the same way.



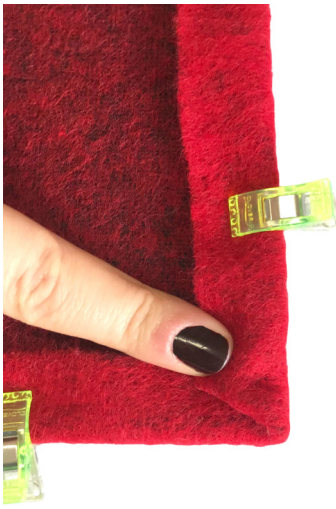
Now fold the seam allowance all around along the front neckline and the lower hem, with the wrong side of the fabric facing out.



To create a neat corner at the lower hem edges, first fold up the end of the lower hem.



Then fold the corner into a triangle...



... and then fold the front hem edge inward.
Pin everything in place, especially the triangle.
Sew around the jacket's edges using a straight stitch or decorative stitch.

Leave the neckline as it is for now.



Now, let's move on to the hood:
Place the outer hood pieces with right sides together, pin them, and sew the center seam.

Repeat the same process with the hood lining.



Now turn the hood lining to the right side and place it inside the outer hood.
The right sides of the hood and hood lining should be facing each other.
Then, match up the edges of the face opening and sew the seam.



Turn the hood inside out, so that the outer and inner hood are wrong sides together.

If you like, you can now topstitch the face opening of the hood with a straight stitch on your sewing machine.



Lay the jacket with the hem and the hood with the wrong side facing up in front of you.

Mark the center of the back neckline (between the shoulder seams), which aligns with the center seam of the hood. Pin the hood along the upper edge to the back neckline. Start with the center back.

The edges of the hood should match up with the hemmed edges of the jacket. Sew the seam, attaching the hood to the jacket.

If you want to attach a hanger loop, cut a strip of ribbon or bias tape approximately 10 cm long.



Fold the strip into a loop.



Then pin the loop in the center back of the hood seam allowance and sew it securely in place with a few stitches on your sewing machine.

Then sew the seam binding as described below.



For the seam binding on the hood, cut another piece of ribbon or bias tape. Of course, you can also use a strip of your hood lining fabric for finishing.

The ribbon or strip should be about 10 cm longer than the neckline seam.



Pin the upper edge of the strip to the seam allowance of the hood. The upper part of the hood seam should be completely covered.

Sew the strip close to the edge using a simple straight stitch, attaching it to the seam allowance.



Then fold the excess end of the strip at the jacket opening inward. The hood seam lies between the two layers of the strip.



After that, fold the lower edge of the strip around the seam and pin it in place, ensuring that the hood seam is completely covered. Make sure no wrinkles are formed.

Sew this edge close to the edge as well.



This is how your seam should look now.



Now your jacket is almost finished. The extra-long sleeves can be either rolled up or, if you prefer, slightly shortened and simply hemmed. For closing the jacket, you can choose buttons, snaps, or toggle fasteners.

Attach the chosen fasteners or, if desired, sew buttonholes.



To sew the buttonholes, mark the center front (indicated in the pattern) and draw the desired position (in pairs side by side or in a row underneath) as well as the number of buttonholes. Sew the buttonholes and attach the buttons on the opposite jacket opening.

Your jacket is now complete.

We wish you lots of joy with your beautiful new, self-made jacket.

Example of fastening using snaps



Example of fastening using toggle buttons



Jovem as a simply lined (reversible) jacket

To sew a simply lined jacket, you need to cut all pattern pieces as described above, but do it twice: once for the inner jacket and once for the outer jacket. To proceed with the sewing, you can follow the instructions in the tutorial 'Simply Lined or Reversible Jacket' on erbsuende.com under 'DIY' - 'Pattern hacks' - with detailed illustrated descriptions

