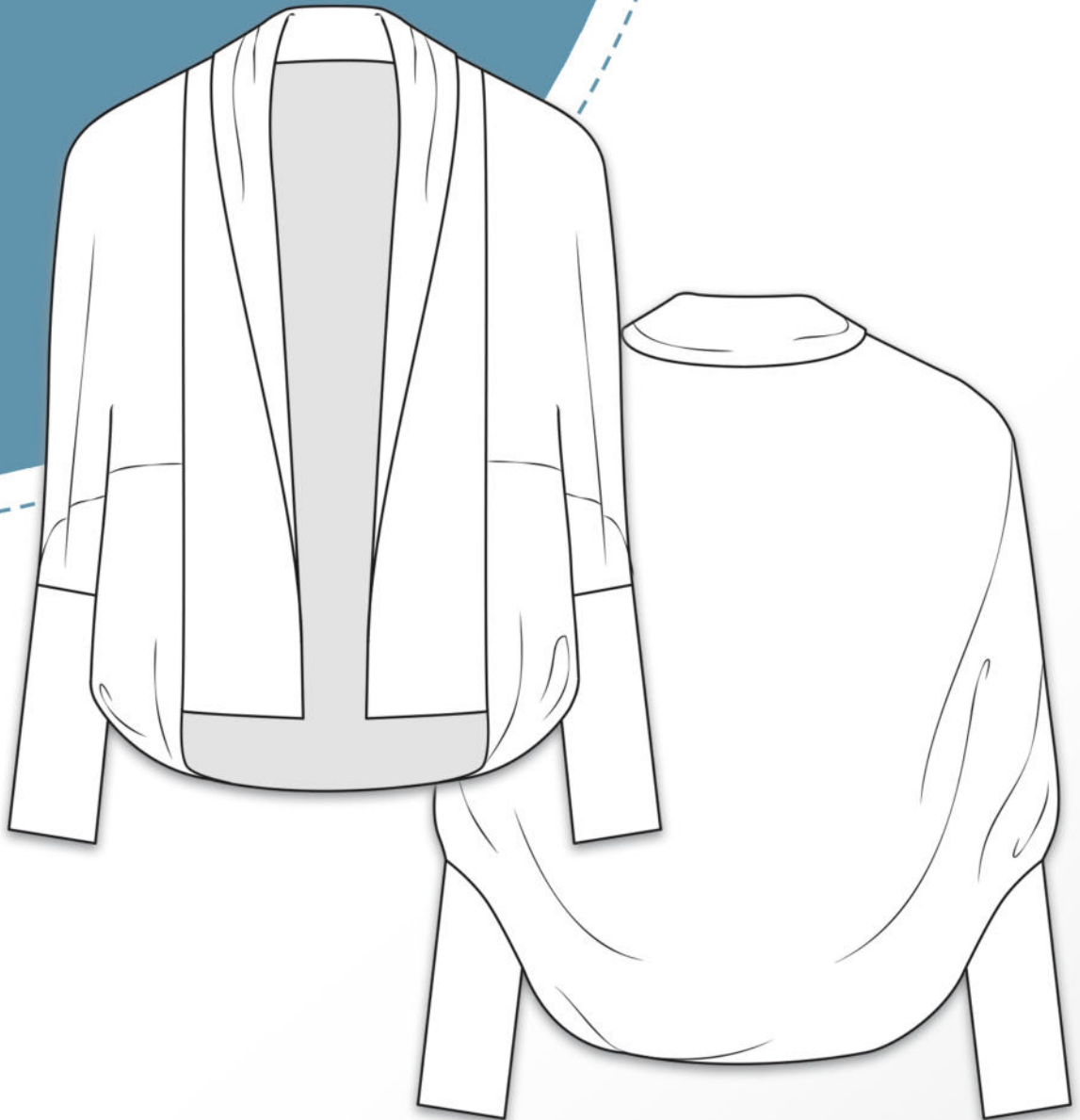


macapa

XS - 4XL

erbsünde



schnittmuster



sewing pattern

Foreword

I am very delighted that you have chosen a pattern from erbsünde.

Since 2013, I have poured a lot of heart and soul into creating patterns for women, men, and children. No body is shaped like another and often, store-bought clothing doesn't fit optimally. We want to move away from run-of-the-mill outfits and towards individual tops, dresses, jackets, coats, and pants, that can be made from self-chosen fabrics – even in larger sizes and shorter or longer lengths. Every pattern can be adjusted as desired and is very versatile due to numerous variants.

With this pattern, you enhance your wardrobe with favorite garments that make you feel comfortable and beautiful and accompany you throughout your day.

The detailed, illustrated instructions help you with the making - step-by-step from cutting the fabric to completing the bag. Certainly, there are some things you have not yet tried, but you can also learn with the help of the instructions and further perfect your hobby – sewing.

On my website at www.erbsuende.com (there: DIY), you will find numerous tutorials and instructions for pattern modifications.

If you have any questions, feel free to send me an email at info@erbsuende.com.

I wish you a lot of joy with your new pattern,

Your Ilka

Imprint

© erbsünde

Ilka Matthiessen

Year of Publication: 2024

Author/Creator/Copyright holder: Ilka Matthiessen

Editing/Proofreading: Ilka Matthiessen



This work, including its parts, is protected by copyright and may not be shared. Any use without the consent of the author is prohibited and expressly forbidden. This applies in particular to (even partial) electronic or other reproduction, translation, distribution, and public accessibility. All rights reserved by Ilka Matthiessen erbsünde Karlsbader Str. 8 80937 Munich, Germany info@erbsuende.com

About macapa

Macapa is a cozy cocoon cardigan with long, fitted cuffs. It is made from soft, stretchy knit fabrics, making it a comfortable jacket to throw on all year round.

The pattern includes sizes XS - 4XL.

Size Chart

The following table helps you choose the right size for a relaxed-fit jacket.

If you prefer the jacket to be shorter and more fitted, select one size smaller. However, ensure that your fabric has good stretch; otherwise, the jacket may restrict your movement.

Height	up to 1,55m	up to 1,60m	up to 1,70m	up to 1,71m
Bust Circumference				
up to 95cm	XS/S	M/L	M/L	XL/2XL
up to 105cm	M/L	M/L	M/L	XL/2XL
up to 115cm	XL/2XL	XL/2XL	XL/2XL	XL/2XL
up to 140cm	3XL/4XL	3XL/4XL	3XL/4XL	3XL/4XL

Fabric Recommendation

All soft, stretchy knit fabrics are suitable.

Fabric Requirements for a Fabric Width of 1.45m

Size	XS - S	M - L	XL - 2XL	3XL - 4XL
Fabric Length	1,5m	1,8m	2m	2,5m

Seam and Hem Allowances

The pattern does not include seam and hem allowances; these need to be added individually when cutting.

Required Materials

- Fabric (see above)
- Tape for assembling the pattern
- Scissors, measuring tape, pins or clips
- Sewing machine, overlock/coverlock (if available), iron

Important Notes

- Before cutting, please read the entire instructions first!
- The pattern does not include seam and hem allowances.
- To open and print the pattern correctly, please use the latest version of Adobe Acrobat Reader.
- When printing, ensure that the setting is either 100% or "actual size".

Legal Notice

All rights to this pattern are owned by Ilka Matthiessen, erbsünde. The pattern may be used for personal purposes. For commercial use of the pattern, a maximum of 20 finished garments may be made and sold without a license. For the commercial production of more than 20 garments, a commercial license must be purchased in advance at www.erbsuende.com. Mass production of garments made from this pattern is prohibited. Distribution, resale, exchange, copying, printing, or (partial) publication of this pattern is expressly prohibited – violations of copyright will result in significant fines. When selling garments made from this pattern, please include the following statement: **Made with a pattern by erbsünde.**



Cutting Macapa with Double-Layer Collar

Fold the fabric wrong sides together. Place the pattern piece for the body on it. Cut the pattern piece once on the fold.



Fold the fabric wrong sides together and place the pattern piece for the collar with the "Center Back/Fold" marking along the edge.

Cut the pattern piece once on the fold.

If your fabric is not wide enough, you can also cut the collar in double fabric layers and join the two pieces with a center seam to create a long collar.



Cut the cuffs 2 times on the fold.

Legal Notice

All rights to this pattern are owned by Ilka Matthiessen, erbsünde. The pattern may be used for personal purposes. For commercial use of the pattern, a maximum of 20 finished garments may be made and sold without a license. For the commercial production of more than 20 garments, a commercial license must be purchased in advance at www.erbsuende.com. Mass production of garments made from this pattern is prohibited. Distribution, resale, exchange, copying, printing, or (partial) publication of this pattern is expressly prohibited – violations of copyright will result in significant fines. When selling garments made from this pattern, please include the following statement: **Made with a pattern by erbsünde.**

Sewing Macapa with Double-Layer Collar

Fold the body pattern piece right sides together and pin the underarm edges together.

Sew the seam and repeat the process on the other side.



This is what your jacket looks like now.



Mark the center of the top edge of the jacket.

**Legal Notice**

All rights to this pattern are owned by Ilka Matthiessen, erbsünde. The pattern may be used for personal purposes. For commercial use of the pattern, a maximum of 20 finished garments may be made and sold without a license. For the commercial production of more than 20 garments, a commercial license must be purchased in advance at www.erbsuende.com. Mass production of garments made from this pattern is prohibited. Distribution, resale, exchange, copying, printing, or (partial) publication of this pattern is expressly prohibited – violations of copyright will result in significant fines. When selling garments made from this pattern, please include the following statement: **Made with a pattern by erbsünde.**

Take the collar piece.
Fold it right sides together and pin the
short edges together. Sew the seams.



Turn the collar so that it is wrong sides
together.



Mark the center of the open edge of the
collar as well.

**Legal Notice**

All rights to this pattern are owned by Ilka Matthiessen, erbsünde. The pattern may be used for personal purposes. For commercial use of the pattern, a maximum of 20 finished garments may be made and sold without a license. For the commercial production of more than 20 garments, a commercial license must be purchased in advance at www.erbsuende.com. Mass production of garments made from this pattern is prohibited. Distribution, resale, exchange, copying, printing, or (partial) publication of this pattern is expressly prohibited – violations of copyright will result in significant fines. When selling garments made from this pattern, please include the following statement: **Made with a pattern by erbsünde.**

Pin the collar right sides together to the top edge of the jacket, starting from the center marking.
The collar does not end at the underarm seam but extends slightly beyond it.
Sew the seam.



When attaching the collar with the overlock, sew all the way around the jacket, simultaneously finishing the bottom edge of the jacket (the section between the ends of the collar).

Now take the first cuff..



Legal Notice

All rights to this pattern are owned by Ilka Matthiessen, erbsünde. The pattern may be used for personal purposes. For commercial use of the pattern, a maximum of 20 finished garments may be made and sold without a license. For the commercial production of more than 20 garments, a commercial license must be purchased in advance at www.erbsuende.com. Mass production of garments made from this pattern is prohibited. Distribution, resale, exchange, copying, printing, or (partial) publication of this pattern is expressly prohibited – violations of copyright will result in significant fines. When selling garments made from this pattern, please include the following statement: **Made with a pattern by erbsünde.**



Fold the cuff lengthwise, right sides together. Pin the edges and sew the seam. Repeat the process with the other cuff.

Fold the cuff in half, wrong sides together. Mark the quarters of the cuff along the open edge.



Mark the quarters of the sleeve as well.



Legal Notice

All rights to this pattern are owned by Ilka Matthiessen, erbsünde. The pattern may be used for personal purposes. For commercial use of the pattern, a maximum of 20 finished garments may be made and sold without a license. For the commercial production of more than 20 garments, a commercial license must be purchased in advance at www.erbsuende.com. Mass production of garments made from this pattern is prohibited. Distribution, resale, exchange, copying, printing, or (partial) publication of this pattern is expressly prohibited – violations of copyright will result in significant fines. When selling garments made from this pattern, please include the following statement: **Made with a pattern by erbsünde.**



Slide the cuff, right sides together, over the sleeve. Pin the cuff to the sleeve, ensuring the markings match up. Sew the seam and repeat the process with the other sleeve.

If the cuffs are too wide, you can detach them, narrow them, and reattach them as described above.

Your jacket is finished.



Cutting Macapa with a Single-Layer Collar

If you are using a thicker fabric, you can sew the collar as a single layer. Fold the fabric wrong sides together. Place the pattern piece for the body on it. Cut the pattern piece once on the fold.



Legal Notice

All rights to this pattern are owned by Ilka Matthiessen, erbsünde. The pattern may be used for personal purposes. For commercial use of the pattern, a maximum of 20 finished garments may be made and sold without a license. For the commercial production of more than 20 garments, a commercial license must be purchased in advance at www.erbsuende.com. Mass production of garments made from this pattern is prohibited. Distribution, resale, exchange, copying, printing, or (partial) publication of this pattern is expressly prohibited – violations of copyright will result in significant fines. When selling garments made from this pattern, please include the following statement: **Made with a pattern by erbsünde.**

Cut the cuffs 2 times on the fold.



Fold the collar pattern piece in half vertically so that the collar is only half as tall.

Cut the collar once on the fold.



If your fabric is not wide enough, you can also cut the collar in double fabric layers and join the two pieces with a center seam to create a long collar.

Sewing Macapa with a Single-Layer Collar

Fold the body pattern piece right sides together and pin the underarm edges together.

Sew the seam and repeat the process on the other side.



Legal Notice

All rights to this pattern are owned by Ilka Matthiessen, erbsünde. The pattern may be used for personal purposes. For commercial use of the pattern, a maximum of 20 finished garments may be made and sold without a license. For the commercial production of more than 20 garments, a commercial license must be purchased in advance at www.erbsuende.com. Mass production of garments made from this pattern is prohibited. Distribution, resale, exchange, copying, printing, or (partial) publication of this pattern is expressly prohibited – violations of copyright will result in significant fines. When selling garments made from this pattern, please include the following statement: **Made with a pattern by erbsünde.**

This is what your jacket looks like now.
Mark the center of the top edge of the jacket.



Mark the center of one long edge of the collar as well.



Pin the collar right sides together to the jacket. Start with the center marking and then pin to the right and left until you reach the ends of the collar.
The collar does not end at the underarm seam but extends beyond it.
Sew the seam.

**Legal Notice**

All rights to this pattern are owned by Ilka Matthiessen, erbsünde. The pattern may be used for personal purposes. For commercial use of the pattern, a maximum of 20 finished garments may be made and sold without a license. For the commercial production of more than 20 garments, a commercial license must be purchased in advance at www.erbsuende.com. Mass production of garments made from this pattern is prohibited. Distribution, resale, exchange, copying, printing, or (partial) publication of this pattern is expressly prohibited – violations of copyright will result in significant fines. When selling garments made from this pattern, please include the following statement: **Made with a pattern by erbsünde.**



When attaching the collar with the overlock, sew all the way around the jacket, simultaneously finishing the bottom edge of the jacket (the section between the ends of the collar). If your fabric needs finishing, also finish the raw edges of the collar.

This is what your jacket looks like now.



Now take the cuffs. Fold the cuffs lengthwise, right sides together. Pin the edges and sew the seam. Repeat the process with the other cuff.



Mark the quarters of the armhole of the jacket.

Legal Notice

All rights to this pattern are owned by Ilka Matthiessen, erbsünde. The pattern may be used for personal purposes. For commercial use of the pattern, a maximum of 20 finished garments may be made and sold without a license. For the commercial production of more than 20 garments, a commercial license must be purchased in advance at www.erbsuende.com. Mass production of garments made from this pattern is prohibited. Distribution, resale, exchange, copying, printing, or (partial) publication of this pattern is expressly prohibited – violations of copyright will result in significant fines. When selling garments made from this pattern, please include the following statement: **Made with a pattern by erbsünde.**

Now mark the quarters on the open edge of the first cuff as well.



Slide the cuff, right sides together, over the sleeve. Pin the cuff to the sleeve, ensuring the markings match up. Sew the seam and repeat the process with the other sleeve.



This is what your attached cuff looks like.



Legal Notice

All rights to this pattern are owned by Ilka Matthiessen, erbsünde. The pattern may be used for personal purposes. For commercial use of the pattern, a maximum of 20 finished garments may be made and sold without a license. For the commercial production of more than 20 garments, a commercial license must be purchased in advance at www.erbsuende.com. Mass production of garments made from this pattern is prohibited. Distribution, resale, exchange, copying, printing, or (partial) publication of this pattern is expressly prohibited – violations of copyright will result in significant fines. When selling garments made from this pattern, please include the following statement: **Made with a pattern by erbsünde.**

Fold the cuff down.

This is what your sleeve looks like now.

If needed, you can detach the cuff again and narrow it.



Your jacket with a single-layer collar is finished.



Legal Notice

All rights to this pattern are owned by Ilka Matthiessen, erbsünde. The pattern may be used for personal purposes. For commercial use of the pattern, a maximum of 20 finished garments may be made and sold without a license. For the commercial production of more than 20 garments, a commercial license must be purchased in advance at www.erbsuende.com. Mass production of garments made from this pattern is prohibited. Distribution, resale, exchange, copying, printing, or (partial) publication of this pattern is expressly prohibited – violations of copyright will result in significant fines. When selling garments made from this pattern, please include the following statement: **Made with a pattern by erbsünde.**