

Maria

Cross Body Carrier
up to 6 kg/13lbs

erbsünde



schnittmuster



sewing pattern

Foreword

I'm delighted that you've chosen an erbsünde sewing pattern.

Since 2013, I've poured my heart and soul into creating patterns for women, men, and children.

No body is shaped the same, and often ready-to-wear clothing doesn't fit perfectly. We want to move away from generic outfits and towards personalized tops, dresses, jackets, coats, and pants that can be made from your preferred fabrics - even in larger sizes and longer lengths. Each pattern can be customized to your liking and offers great versatility with numerous variations.

Our women's sewing patterns take into account the nuances of the female figure, creating visually harmonious silhouettes. Whether you have a large or small bust, generous hips, or a more slender frame, my goal is to enhance women's body confidence. I want to show them that with the right clothing, they can feel beautiful and comfortable in any size, empowering them to embrace their uniqueness and radiate confidence.

With these sewing patterns, you will expand your wardrobe with favorite pieces that make you feel comfortable and accompany you beautifully through your day.

The detailed, illustrated instructions will guide you through the entire process, from cutting the fabric to completing the garment step-by-step. Some elements may be new to you, but with the help of the instructions, you can learn and further perfect your sewing hobby.

On my website www.erbsuende.com (under DIY), you will find numerous tutorials and guides for pattern hacks and modifications. If you have any questions, feel free to email me at info@erbsuende.com.

I wish you much joy with your new sewing pattern.

Yours sincerely,
Ilka

Imprint

© erbsünde Ilka Matthiessen

Year of Publication: 2023

Author/Creator/Copyright Holder: Ilka Matthiessen

Editing/Proofreading: Ilka Matthiessen

This work, including its parts, is protected by copyright and may not be redistributed. Any use without the author's consent is strictly prohibited and expressly forbidden. This applies especially to (partially) electronic or other reproduction, translation, dissemination, distribution, and public accessibility.

All rights are reserved by
Ilka Matthiessen erbsünde
Karlsbader Str. 8
80937 München
info@erbsuende.com
www.erbsuende.com



Maria

Table of contents

Material Sheet: Fabric Recommendation, Required Materials, Important Notes	1
Cut Maria	2
Sew Maria	3 – 22
Sew Pocket for Mobile Phone	22 - 24



About maria

Maria is a fashionable and highly practical crossbody bag designed for carrying small dogs. It is deep enough for the dog to lie comfortably inside while still being able to rest its head on the edge of the pocket opening. The wide strap runs diagonally across the back, making it comfortable to wear the bag even for extended periods. Depending on the season, it can be sewn from warmer or lighter fabrics. The key is to choose fabrics that are not too thick, making it easier to attach the straps securely.

Fabric Recommendation

Since up to 6 layers of fabric need to be sewn together when attaching the bag and straps, suitable fabrics include all sturdy yet not overly thick materials such as canvas, cotton, lightweight plush, thin fleece, lightweight sweatshirt fabric, fine corduroy, denim, linen, and more.

Fabric Quantity

For the bag, you will need 95cm in height x 145cm in width of inner fabric, and 95cm in height x 145cm in width of outer fabric.

Seam and Hem Allowances

The pattern template already includes a seam allowance of 1cm, so you don't need to add this separately when cutting.

Required Materials

- Fabric (see above)
- Tape for Assembling the Pattern
- Scissors, Pins or Clips
- Sewing Machine

Important Notes

- Before cutting, please read through the entire instructions first.
- For proper opening and printing of the pattern, please use the latest Adobe Acrobat Reader.
- When adjusting the print settings, ensure that either 100% scale or "no page scaling" is selected.



Cut Maria

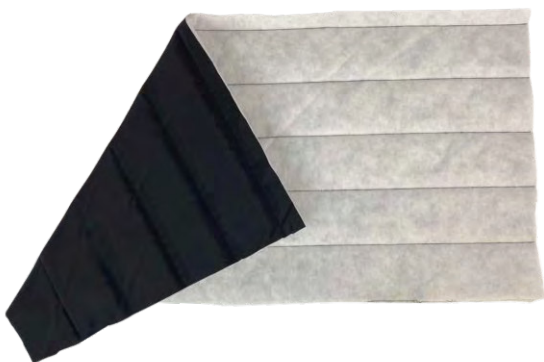
You'll need an inner fabric as well as an outer fabric. Choose whichever colors and materials you'd like to combine based on your preferences.

First, fold the inner fabric with wrong sides together. Place the pattern piece for the bag on top. Cut out the pattern piece once in a double layer of fabric. This will give you two mirror-image pattern pieces.



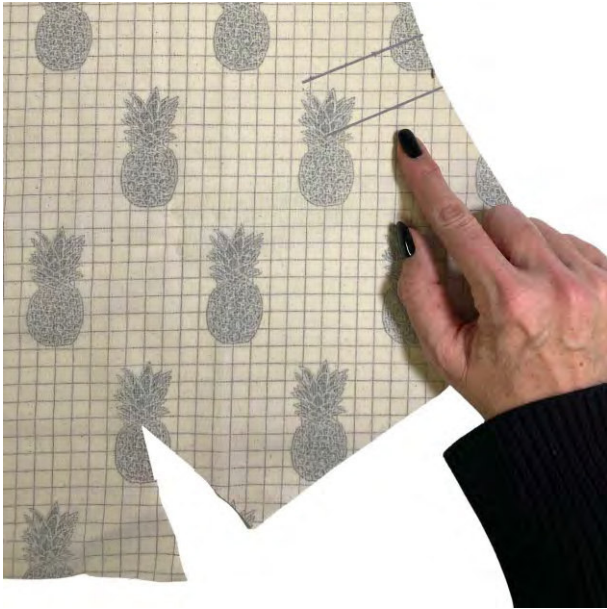
Fold the outer fabric with wrong sides together. Place the pattern piece for the bag on it. Cut out the pattern piece once in a double layer of fabric. You will obtain two mirror-image pattern pieces.

If your outer fabric is a bit more fluffy, you can also cut both pieces separately..



Then, cut the strap once in a single layer of fabric.

Attention: If you're sewing with a fabric that frays easily, finish the edges of all bag pieces first.



Sew Maria

We will start with the inner bag.
First, transfer all the dart markings
from the pattern to the wrong side of
both inner bag pieces.



Take the first bag piece and align the
two markings for the darts together.



Then, pin them in place with pins.



Sew the dart in place using a straight stitch on your sewing machine. Repeat this process on the other side and then with the second inner piece.

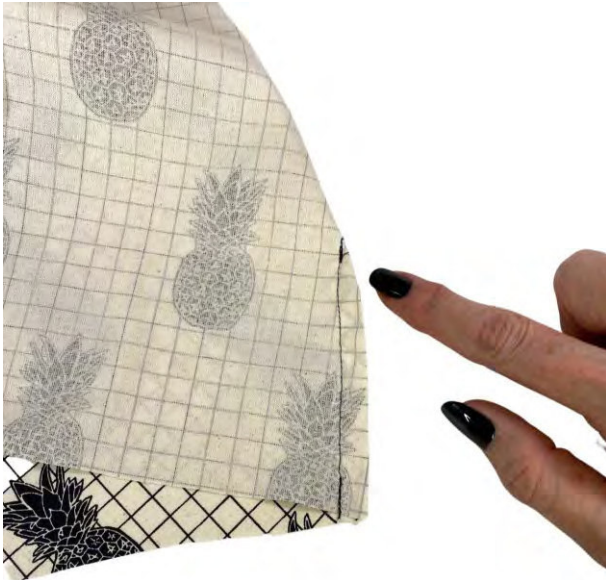
Now, place the edges of the two open triangles right sides together and pin them in place.



Sew them together using a straight stitch.



The seam runs from the edge to the tip.



Trim close to the tip of the seam, being careful not to cut into the seam itself!



This is how your first bag piece should look once sewn. Repeat this process with the second inner piece and the two outer bag pieces.



Now, lay the first inner piece with the right side (the pretty side of the fabric) facing up in front of you.



Place the second inner piece right sides together on top of it and pin the bottom curved edges together.



Sew the two edges together using a straight stitch on your sewing machine. For added security, stitch a second parallel seam to reinforce it.





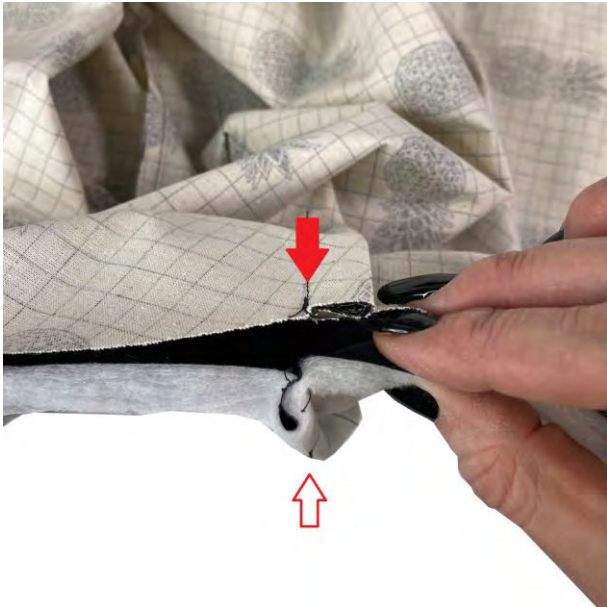
This is how the seams on the inner bag should look from the wrong side of the fabric.



Now, repeat the process with the two pieces of the outer bag and sew them together as well using a double seam.



Now, the outer and inner bags will be inserted into one another. Turn the inner bag right side out, while the outer bag remains inside out. Then, slide the inner bag into the outer bag. The right sides of the fabric should face each other.



The darts and the center seam of the inner bag should align with the darts and the center seam of the outer bag.

Pin the fabric edges of the two long sides together.



Sew them together using a straight stitch on your sewing machine.



Fold the bag widthwise; the eventual shape of the bag is now easily recognizable.

The top opening of your bag is now sewn shut, while the two sides, where the strap will later be attached, remain open.



Turn the bag right side out through one of the side openings.



Here's how your bag looks once it's turned right side out. The short edges (on the right and left in the picture) are still open.



To ensure that the outer and inner fabric do not shift, we will now topstitch the upper edge.



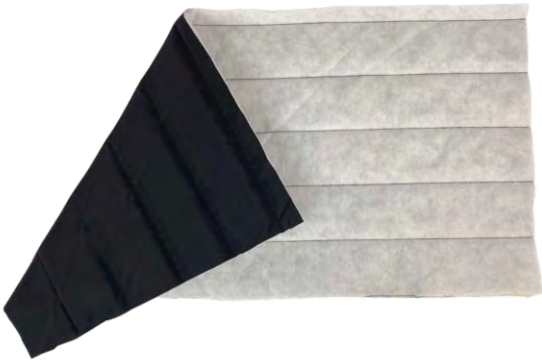
Pin the upper opening edge securely in place.



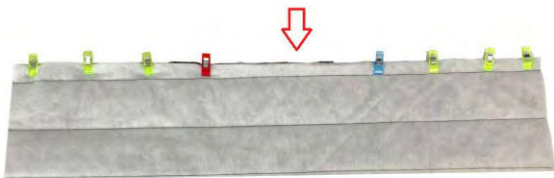
Allow the inner fabric to protrude slightly so it's visible. Then, topstitch the upper edge on both sides using a straight stitch on your sewing machine.



Now, let's move on to the strap. Grab the fabric you've cut out for it.



Fold the fabric in half widthwise with the right sides facing each other, and pin the long edges together. Leave an opening in the middle for turning. The ends should remain open as well.



Important: Do not sew the top edge completely shut; instead, leave an opening for turning.



Now, turn the strap right side out. The seam, including the opening for turning, should be in the middle of the strap, not on the side. This way, the seam will later be hidden on the underside of the strap.



Now, take the first, still open, narrow side of the bag (marked in the pattern as "strap side") in hand.



Mark the center of the side with a clip or pin.



Next, mark the quarters of the side.



Now, fold the outer edges to the first marking and pin them in place.



Then, take one of the pinned edges and place it on top of the center marking. Pin it in place.



This is how the first side looks when pinned.



Now, take the second pinned edge and lay it on top, directly next to the other edge that's secured in the middle.



Pin it in place.
The two outer edges now sit directly next to each other.



This is how the folded and pinned fabric looks now.



This is what the strap side looks like from the outside.



Stitch the folded fabric in place now using a straight stitch on your sewing machine. Make sure the folds don't shift while sewing.

Repeat the same process with the other strap side - fold the edges accordingly and stitch them in place.



On my YouTube channel, you can find a video in German where I explain the following process of attaching the strap.

<https://youtu.be/wW5ZxllnbnA>

Take the strap in hand.
Insert your hand through the middle turning opening and push it out through one of the side openings.



Then, grasp one of the bag sides with your hand.

Attention: The seam of the strap must align with the pocket opening.



Pull the side of the pocket through the central opening in the strap, ensuring that the edges of the pocket align with the edges of the lateral strap opening.



The right fabric sides of the strap and pocket side come together. The pocket side is positioned inside the strap, with the open edges aligning.

Attention: The central seam of the strap should align with the edges of the pocket opening.



Align the open edges together.



Then sew the open edges together using a straight stitch on your sewing machine. As a precaution, we recommend adding a second seam for extra security to ensure everything stays in place.

One side of the strap is now stitched to the pocket, while the other side of the strap remains open.



Now, pull the pocket out from the strap - just to reiterate: the seam of the strap aligns with the point where the edges of the pocket opening come together.



The second side of the strap is still open; it will now be sewn in the same manner.





Insert your hand back through the central turning opening and then reach through the lateral strap opening to grasp the pocket side.



Pull the lateral strap opening and the pocket side through the central turning opening of the strap to the outside. The open edges of the strap and pocket will align with each other.



Again, align the edges together here as well...



... and sew them together using a straight stitch on your sewing machine. Remember to add the second reinforcing seam.



Then pull the pocket out of the strap again, and the center seam of the strap will align with the two opening edges of the pocket.



Your dog bag is almost complete; you just need to close the turning opening.

Here you can see the still open turning opening in the strap.



Fold the edges of the seam allowance inward and pin or clip the turning opening together.



Now sew the opening closely using a straight stitch on your sewing machine or by hand using a mattress stitch.



Contratulations! Your dog bag is now complete.



Sew a pocket for your mobile phone

If you want to sew on a phone pouch, you'll find a pattern piece and a placement marker on the pattern template.

Cut out the outer pouch fabric, then transfer the pocket position marker from the pattern template onto one of the two outer pocket pieces.



The easiest way to mark this is by cutting and folding up the pocket marker on the pattern template. Then, you can transfer the marker onto the fabric.

Before you cut out the pocket piece, make sure that your phone model fits within the designated pocket size. If not, you might need to enlarge it accordingly.

The included size is suitable for iPhones up to the Pro Max size.





Cut out the pocket piece and fold the seam allowance of the top edge (pocket opening) inward.



Sew the pocket flap securely along the edge using a straight stitch on your sewing machine.



Now, fold the seam allowance of the remaining three edges inward and press them down with an iron.



Now, pin the pocket onto the bag at the marked position on the bag along the three edges using pins.

Important: Do not pin the top pocket opening; it should remain open!



Sew the pocket to the bag along the three pinned edges using a straight stitch on your sewing machine.



Your phone case is now complete. Now, finish sewing the dog bag as described above.