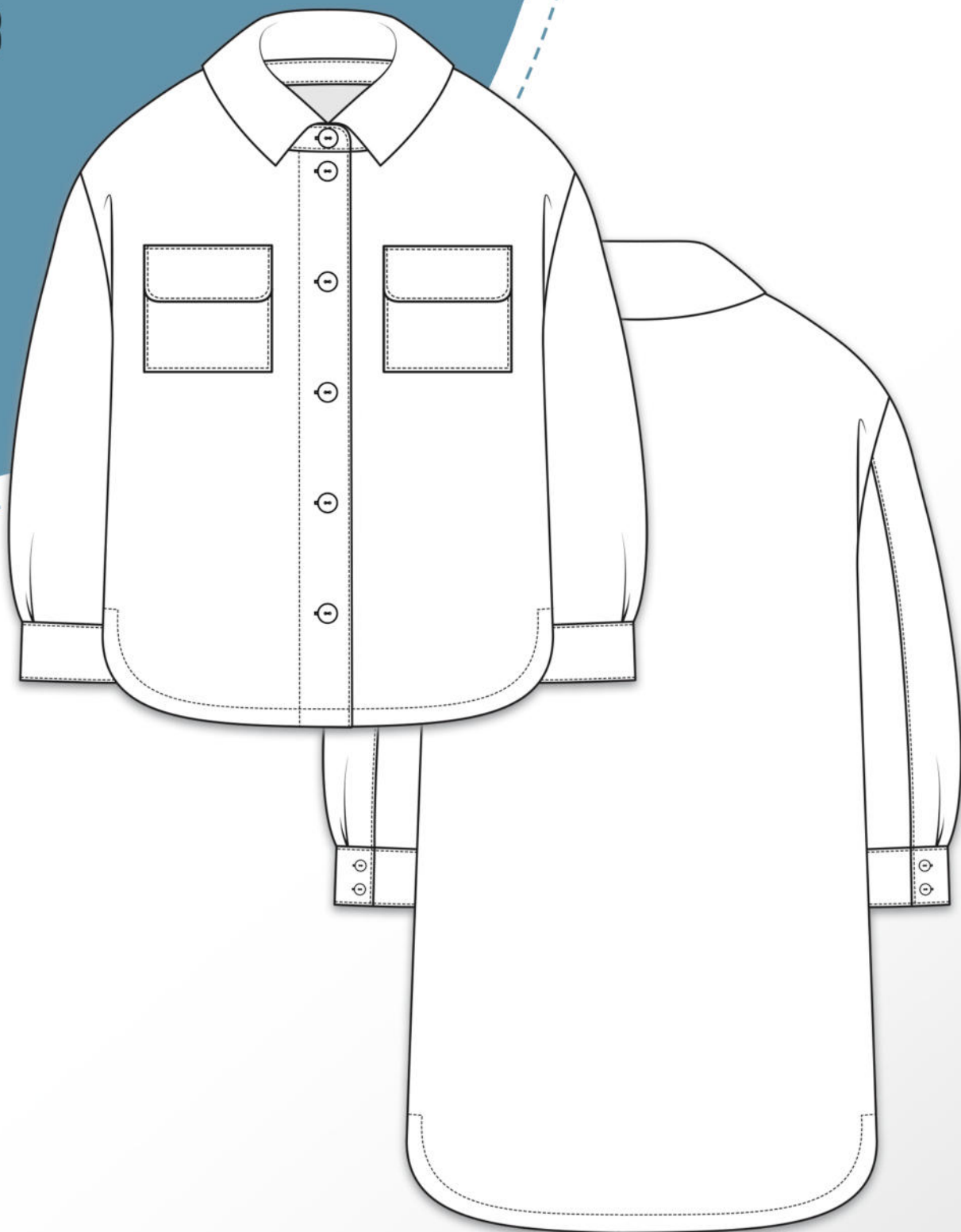


OSASCO

34 - 58

erbsünde



schnittmuster



sewing pattern

About Osasco

Osasco is an oversized shirt jacket with a collar, two-piece sleeves, cuffs, rounded hem edges, and flap chest pockets. The design is intended for thick, warm fabrics. The pattern includes two lengths: hip-length and knee-length. With its loose fit, Osasco can be worn over a sweater, creating a cozy and casual look.

Body Measurement Chart

The following chart helps you choose the right size. The bust measurement is essential for selecting the correct size.

Size EU	34	36	38	40	42	44	46	48	50	52	54	56	58
Bust circumference	up to 90cm	up to 94cm	up to 98cm	up to 102cm	up to 109cm	up to 114cm	up to 120cm	up to 124cm	up to 128cm	up to 132cm	up to 138cm	up to 145cm	up to 150cm
Hip circumference	up to 90cm	up to 94cm	up to 98cm	up to 102cm	up to 109cm	up to 114cm	up to 120cm	up to 124cm	up to 128cm	up to 132cm	up to 138cm	up to 145cm	up to 150cm

Fabric Recommendation

Suitable fabrics for the shacket include non-stretch, thicker materials such as coat fabrics, sherpa fleece, coat flannel, wide-wale corduroy, etc.

If you are using very thick fabrics, you can omit the flaps on the chest pockets.

Fabric Quantity for a Fabric Width of 1.45 m

Size EU	34	36	38	40	42	44	46	48	50	52	54	56	58
SFabric Length for Short Version	2m	2m	2m	2.2m	2.2m	2.2m	2.5m	2.5m	2.5m	2.5m	2.8m	2.8m	2.8m
Fabric Length for Long Version	2.5m	2.5m	2.5m	2.8m	2.8m	2.8m	3m	3m	3m	3m	3.2m	3.2m	3.2m

Seam and Hem Allowances

The sewing pattern does not include seam or hem allowances; these need to be added individually when cutting the fabric.

Required Materials

- Fabric (see above)
- 6–8 buttons or coat snaps
- Optional: fusible interfacing to reinforce the collar and button placket
- Tape for assembling the pattern pieces
- Scissors, measuring tape, pins or clips
- Sewing machine, overlock/coverlock (if available), iron

Important Notes

- Please read the entire instructions before cutting the fabric!
- To correctly open and print the sewing pattern, use the latest version of Adobe Acrobat Reader.
- When printing, make sure the setting is either 100% or "no page scaling."

Legal Notice

All rights to this pattern are owned by Ilka Matthiessen, erbsünde. The pattern may be used for personal purposes. For commercial use, a maximum of 20 finished garments can be made and sold without a license. For the commercial production of more than 20 garments, a business license must be purchased in advance at www.erbsuende.com. Mass production of garments made from this pattern is prohibited. Distribution, resale, exchange, copying, printing, or (partial) publication of this pattern are expressly prohibited—violations of copyright will result in substantial fines. When selling garments made from this pattern, the following must be indicated: **Sewn according to a pattern by erbsünde.**



Cutting Out Osasco

First, select the desired length from the pattern.

Then, fold the fabric wrong sides together and place the front pattern piece on it. Cut the front piece once in double fabric layers.

You will get two mirror-image pieces.

Finish the edges of the pieces.



For the back piece, choose the same length as for the front piece.

Fold the fabric wrong sides together. Place the back pattern piece along the edge labeled "center back/fold" at the fabric fold.

Cut the back piece once on the fold.

Finish the edges of the piece.



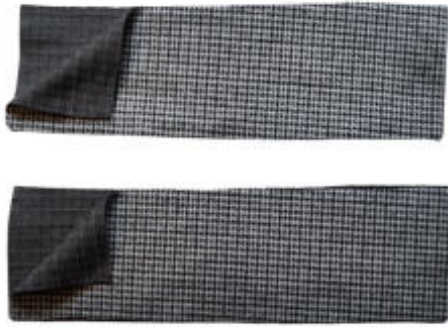
Cut the upper and lower sleeve pieces once each in double fabric layers. You will get two mirror-image pieces of each.

Finish the edges of the pieces.

Legal Notice

All rights to this pattern are owned by Ilka Matthiessen, erbsünde. The pattern may be used for personal purposes. For commercial use, a maximum of 20 finished garments can be made and sold without a license. For the commercial production of more than 20 garments, a business license must be purchased in advance at www.erbsuende.com. Mass production of garments made from this pattern is prohibited. Distribution, resale, exchange, copying, printing, or (partial) publication of this pattern are expressly prohibited—violations of copyright will result in substantial fines. When selling garments made from this pattern, the following must be indicated: **Sewn according to a pattern by erbsünde.**

Cut the cuff twice in double fabric layers.
You will get four pieces.



Finish the edges of the pieces.

Cut the collar and collar stand once each
in double fabric layers. You will get two
mirror-image pieces of each.



Finish the edges of the pieces.

If you are using a thinner fabric, you can
reinforce these pieces on the wrong side
with fusible interfacing.

Cut the pocket once in double fabric
layers.
Cut the flap twice in double fabric layers.



Finish the edges of the pieces.

Legal Notice

All rights to this pattern are owned by Ilka Matthiessen, erbsünde. The pattern may be used for personal purposes. For commercial use, a maximum of 20 finished garments can be made and sold without a license. For the commercial production of more than 20 garments, a business license must be purchased in advance at www.erbsuende.com. Mass production of garments made from this pattern is prohibited. Distribution, resale, exchange, copying, printing, or (partial) publication of this pattern are expressly prohibited—violations of copyright will result in substantial fines. When selling garments made from this pattern, the following must be indicated: **Sewn according to a pattern by erbsünde.**

Sewing Osasco

Take the back piece and lay it open with the right side of the fabric facing up in front of you.



Place the first front piece right sides together on top of the back piece.



Pin the shoulder seams together and sew the seam.

**Legal Notice**

All rights to this pattern are owned by Ilka Matthiessen, erbsünde. The pattern may be used for personal purposes. For commercial use, a maximum of 20 finished garments can be made and sold without a license. For the commercial production of more than 20 garments, a business license must be purchased in advance at www.erbsuende.com. Mass production of garments made from this pattern is prohibited. Distribution, resale, exchange, copying, printing, or (partial) publication of this pattern are expressly prohibited—violations of copyright will result in substantial fines. When selling garments made from this pattern, the following must be indicated: **Sewn according to a pattern by erbsünde.**



Then pin the side seams together, stopping about 5 cm above the beginning of the hem curve. Sew the seam.

Repeat the process with the other front piece.



Now, take the first upper sleeve and the matching lower sleeve, and place them in front of you with the right side of the fabric facing up.



Place the lower sleeve right sides together on top of the upper sleeve. Pin the straight edges together up to the marking on the pattern. Then, sew the seam up to the marking.

This marking indicates the sleeve slit. The seam must NOT be sewn below the marking.

Legal Notice

All rights to this pattern are owned by Ilka Matthiessen, erbsünde. The pattern may be used for personal purposes. For commercial use, a maximum of 20 finished garments can be made and sold without a license. For the commercial production of more than 20 garments, a business license must be purchased in advance at www.erbsuende.com. Mass production of garments made from this pattern is prohibited. Distribution, resale, exchange, copying, printing, or (partial) publication of this pattern are expressly prohibited—violations of copyright will result in substantial fines. When selling garments made from this pattern, the following must be indicated: **Sewn according to a pattern by erbsünde.**



Next, pin the underarm edges of the upper and lower sleeves right sides together and sew the seam.

Repeat the process with the other sleeve.



Now the sleeve will be set into the jacket. Take the jacket again and turn the sleeves right side out.



The sleeves have a slight extra fullness—this is necessary to ensure adequate freedom of movement. To sew the sleeves in neatly, they need to be eased in.

To do this, sew two parallel rows of basting stitches along the sleeve cap, within the seam allowance, using a straight stitch with a long stitch length (4.5–5).

Important: Do NOT backstitch to secure the ends!

Legal Notice

All rights to this pattern are owned by Ilka Matthiessen, erbsünde. The pattern may be used for personal purposes. For commercial use, a maximum of 20 finished garments can be made and sold without a license. For the commercial production of more than 20 garments, a business license must be purchased in advance at www.erbsuende.com. Mass production of garments made from this pattern is prohibited. Distribution, resale, exchange, copying, printing, or (partial) publication of this pattern are expressly prohibited—violations of copyright will result in substantial fines. When selling garments made from this pattern, the following must be indicated: **Sewn according to a pattern by erbsünde.**



The stitches will cause the sleeve cap to curve outward slightly on its own.



This is how your eased sleeve looks from the wrong side.



Pull the sleeve right sides together through the armhole.

Legal Notice

All rights to this pattern are owned by Ilka Matthiessen, erbsünde. The pattern may be used for personal purposes. For commercial use, a maximum of 20 finished garments can be made and sold without a license. For the commercial production of more than 20 garments, a business license must be purchased in advance at www.erbsuende.com. Mass production of garments made from this pattern is prohibited. Distribution, resale, exchange, copying, printing, or (partial) publication of this pattern are expressly prohibited—violations of copyright will result in substantial fines. When selling garments made from this pattern, the following must be indicated: **Sewn according to a pattern by erbsünde.**



Pin the sleeve right sides together around the armhole according to the markings on the pattern. The underarm seam should align with the side seam. If the sleeve is still too wide, you can adjust the extra fullness by pulling on the easing threads.

Sew the seam and repeat the process with the other sleeve.



This is how your jacket looks now.



Now, take the first collar piece and place it in front of you with the right side of the fabric facing up.

Legal Notice

All rights to this pattern are owned by Ilka Matthiessen, erbsünde. The pattern may be used for personal purposes. For commercial use, a maximum of 20 finished garments can be made and sold without a license. For the commercial production of more than 20 garments, a business license must be purchased in advance at www.erbsuende.com. Mass production of garments made from this pattern is prohibited. Distribution, resale, exchange, copying, printing, or (partial) publication of this pattern are expressly prohibited—violations of copyright will result in substantial fines. When selling garments made from this pattern, the following must be indicated: **Sewn according to a pattern by erbsünde.**

Place the second collar piece right sides together on top of the first.
Pin the longest edge and the two short edges together, then sew the seam.



Carefully trim the seam allowance at the corners of the collar.
Be sure not to cut into the seam.



Turn the collar right side out and shape the corners well.

Then, mark the center of the still open edge of the collar. Now, take the first collar stand and also mark the center of the shorter of the two long edges.

**Legal Notice**

All rights to this pattern are owned by Ilka Matthiessen, erbsünde. The pattern may be used for personal purposes. For commercial use, a maximum of 20 finished garments can be made and sold without a license. For the commercial production of more than 20 garments, a business license must be purchased in advance at www.erbsuende.com. Mass production of garments made from this pattern is prohibited. Distribution, resale, exchange, copying, printing, or (partial) publication of this pattern are expressly prohibited—violations of copyright will result in substantial fines. When selling garments made from this pattern, the following must be indicated: **Sewn according to a pattern by erbsünde.**

Place the first collar stand in front of you with the right side of the fabric facing up. Place the collar right sides together on top of it, ensuring that the center markings align precisely.



Pin the collar along the entire length of the collar stand.

Then place the second collar stand right sides together on top of the collar and pin it in place as well. The collar is now sandwiched between the two collar stand pieces.



Sew the seam.

Carefully clip the seam allowance along the curves of the collar stand. Be sure not to cut into the seam.



Legal Notice

All rights to this pattern are owned by Ilka Matthiessen, erbsünde. The pattern may be used for personal purposes. For commercial use, a maximum of 20 finished garments can be made and sold without a license. For the commercial production of more than 20 garments, a business license must be purchased in advance at www.erbsuende.com. Mass production of garments made from this pattern is prohibited. Distribution, resale, exchange, copying, printing, or (partial) publication of this pattern are expressly prohibited—violations of copyright will result in substantial fines. When selling garments made from this pattern, the following must be indicated: **Sewn according to a pattern by erbsünde.**

Turn the collar stand right side out.

This is how your prepared collar now looks.



Now press the seam allowance on ONE of the still open edges of the collar stand inward.



The seam allowance on the other edge remains as is and should NOT be pressed inward.

Legal Notice

All rights to this pattern are owned by Ilka Matthiessen, erbsünde. The pattern may be used for personal purposes. For commercial use, a maximum of 20 finished garments can be made and sold without a license. For the commercial production of more than 20 garments, a business license must be purchased in advance at www.erbsuende.com. Mass production of garments made from this pattern is prohibited. Distribution, resale, exchange, copying, printing, or (partial) publication of this pattern are expressly prohibited—violations of copyright will result in substantial fines. When selling garments made from this pattern, the following must be indicated: **Sewn according to a pattern by erbsünde.**



Pin the collar right sides together to the neckline of the jacket. Pin the edge of the collar where the seam allowance has NOT been pressed inward, starting at the center back. The edge with the pressed-in seam allowance should remain free.



Pin the collar along its entire length. The collar is shorter than the neckline of the jacket, which is correct.

Sew the seam.



Now fold the extended front edges of the front pieces inward to create double fabric layers for the button placket.

If you are using a thinner fabric, you can reinforce the front edges with fusible interfacing on the wrong side before folding.

Legal Notice

All rights to this pattern are owned by Ilka Matthiessen, erbsünde. The pattern may be used for personal purposes. For commercial use, a maximum of 20 finished garments can be made and sold without a license. For the commercial production of more than 20 garments, a business license must be purchased in advance at www.erbsuende.com. Mass production of garments made from this pattern is prohibited. Distribution, resale, exchange, copying, printing, or (partial) publication of this pattern are expressly prohibited—violations of copyright will result in substantial fines. When selling garments made from this pattern, the following must be indicated: **Sewn according to a pattern by erbsünde.**



Now fold the collar stand down. The neckline seam allowance of the jacket should be sandwiched between the two layers of the collar stand.



Pin the collar stand from the right side of the jacket, stitching in the ditch along the seam.



Be sure to pin through the folded seam allowance on the wrong side as well, securing it in place.

Legal Notice

All rights to this pattern are owned by Ilka Matthiessen, erbsünde. The pattern may be used for personal purposes. For commercial use, a maximum of 20 finished garments can be made and sold without a license. For the commercial production of more than 20 garments, a business license must be purchased in advance at www.erbsuende.com. Mass production of garments made from this pattern is prohibited. Distribution, resale, exchange, copying, printing, or (partial) publication of this pattern are expressly prohibited—violations of copyright will result in substantial fines. When selling garments made from this pattern, the following must be indicated: **Sewn according to a pattern by erbsünde.**

Pin the collar stand along the entire length of the neckline, stitching in the ditch, and then sew the seam in the ditch to secure it.



This is how your attached collar looks from the right side of the fabric.



This is how your attached collar looks from the wrong side of the fabric.

**Legal Notice**

All rights to this pattern are owned by Ilka Matthiessen, erbsünde. The pattern may be used for personal purposes. For commercial use, a maximum of 20 finished garments can be made and sold without a license. For the commercial production of more than 20 garments, a business license must be purchased in advance at www.erbsuende.com. Mass production of garments made from this pattern is prohibited. Distribution, resale, exchange, copying, printing, or (partial) publication of this pattern are expressly prohibited—violations of copyright will result in substantial fines. When selling garments made from this pattern, the following must be indicated: **Sewn according to a pattern by erbsünde.**

Then, take the first cuff and place it in front of you with the right side of the fabric facing up.



Place the second cuff right sides together on top of the first, and pin one long edge and both short edges together. Sew the seam.



Carefully trim the seam allowance at the corners. Be sure not to cut into the seam.

**Legal Notice**

All rights to this pattern are owned by Ilka Matthiessen, erbsünde. The pattern may be used for personal purposes. For commercial use, a maximum of 20 finished garments can be made and sold without a license. For the commercial production of more than 20 garments, a business license must be purchased in advance at www.erbsuende.com. Mass production of garments made from this pattern is prohibited. Distribution, resale, exchange, copying, printing, or (partial) publication of this pattern are expressly prohibited—violations of copyright will result in substantial fines. When selling garments made from this pattern, the following must be indicated: **Sewn according to a pattern by erbsünde.**

Turn the cuff right side out and shape the corners neatly.
Repeat the process with the other cuff.



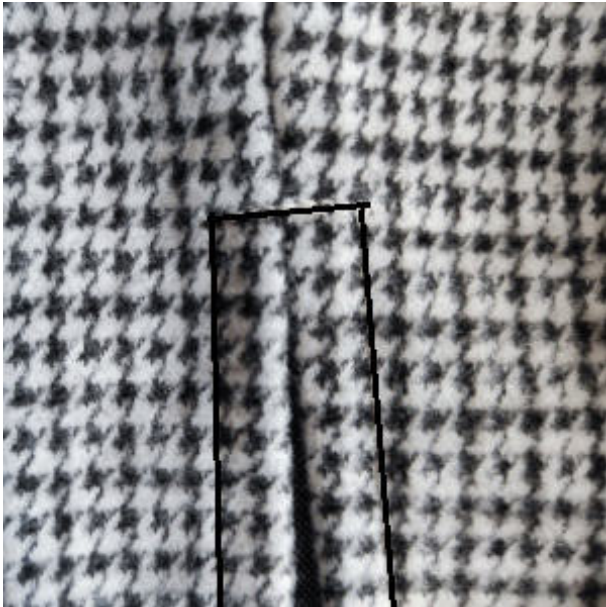
Now, take the jacket again. This is how your sleeve looks now.



Fold the seam allowance on both sides of the slit inward and pin it in place.
Hem the slit.

**Legal Notice**

All rights to this pattern are owned by Ilka Matthiessen, erbsünde. The pattern may be used for personal purposes. For commercial use, a maximum of 20 finished garments can be made and sold without a license. For the commercial production of more than 20 garments, a business license must be purchased in advance at www.erbsuende.com. Mass production of garments made from this pattern is prohibited. Distribution, resale, exchange, copying, printing, or (partial) publication of this pattern are expressly prohibited—violations of copyright will result in substantial fines. When selling garments made from this pattern, the following must be indicated: **Sewn according to a pattern by erbsünde.**



This is how the hemmed slit looks from the right side of the fabric.
Repeat the process with the other sleeve.

Next, transfer the markings for the pleats from the pattern onto the sleeve hem.



Place the second marking on top of the first to create the first pleat.



Legal Notice

All rights to this pattern are owned by Ilka Matthiessen, erbsünde. The pattern may be used for personal purposes. For commercial use, a maximum of 20 finished garments can be made and sold without a license. For the commercial production of more than 20 garments, a business license must be purchased in advance at www.erbsuende.com. Mass production of garments made from this pattern is prohibited. Distribution, resale, exchange, copying, printing, or (partial) publication of this pattern are expressly prohibited—violations of copyright will result in substantial fines. When selling garments made from this pattern, the following must be indicated: **Sewn according to a pattern by erbsünde.**



This is how the pleat looks.



Pin the first pleat in place and repeat the process with the second pleat.



This is how the two pinned pleats look. Secure the pleats with a few stitches within the seam allowance, and repeat the process with the other sleeve.

Legal Notice

All rights to this pattern are owned by Ilka Matthiessen, erbsünde. The pattern may be used for personal purposes. For commercial use, a maximum of 20 finished garments can be made and sold without a license. For the commercial production of more than 20 garments, a business license must be purchased in advance at www.erbsuende.com. Mass production of garments made from this pattern is prohibited. Distribution, resale, exchange, copying, printing, or (partial) publication of this pattern are expressly prohibited—violations of copyright will result in substantial fines. When selling garments made from this pattern, the following must be indicated: **Sewn according to a pattern by erbsünde.**

Now the cuff will be sewn onto the sleeve.



First, as with the collar stand, press the seam allowance on ONE edge of the cuff inward. The seam allowance on the other edge remains unpressed.



Next, pin the cuff right sides together with the sleeve hem, aligning the edges of the slit and the cuff. Only pin the edge with the UNPRESSED seam allowance. The edge with the pressed-in seam allowance should remain free.



Sew the seam.

Legal Notice

All rights to this pattern are owned by Ilka Matthiessen, erbsünde. The pattern may be used for personal purposes. For commercial use, a maximum of 20 finished garments can be made and sold without a license. For the commercial production of more than 20 garments, a business license must be purchased in advance at www.erbsuende.com. Mass production of garments made from this pattern is prohibited. Distribution, resale, exchange, copying, printing, or (partial) publication of this pattern are expressly prohibited—violations of copyright will result in substantial fines. When selling garments made from this pattern, the following must be indicated: **Sewn according to a pattern by erbsünde.**



Fold the cuff downward. The sleeve hem is now sandwiched between the layers of the cuff.



Pin the cuff from the right side of the sleeve, stitching in the ditch along the seam.



Ensure that the inner, pressed-in seam allowance is also pinned securely in place.

Legal Notice

All rights to this pattern are owned by Ilka Matthiessen, erbsünde. The pattern may be used for personal purposes. For commercial use, a maximum of 20 finished garments can be made and sold without a license. For the commercial production of more than 20 garments, a business license must be purchased in advance at www.erbsuende.com. Mass production of garments made from this pattern is prohibited. Distribution, resale, exchange, copying, printing, or (partial) publication of this pattern are expressly prohibited—violations of copyright will result in substantial fines. When selling garments made from this pattern, the following must be indicated: **Sewn according to a pattern by erbsünde.**



Topstitch the cuff all the way around in the ditch, and repeat the process with the other cuff.



This is how your sleeve with the cuff looks now.

You can sew the buttonholes and attach the buttons now or later, along with the buttonholes on the button placket.



Now pin the loose edges of the button placket to the edges of the front pieces. You can fold the finished seam allowance inward so that the finishing seam is no longer visible; however, this edge may add bulk with thicker fabrics.

Legal Notice

All rights to this pattern are owned by Ilka Matthiessen, erbsünde. The pattern may be used for personal purposes. For commercial use, a maximum of 20 finished garments can be made and sold without a license. For the commercial production of more than 20 garments, a business license must be purchased in advance at www.erbsuende.com. Mass production of garments made from this pattern is prohibited. Distribution, resale, exchange, copying, printing, or (partial) publication of this pattern are expressly prohibited—violations of copyright will result in substantial fines. When selling garments made from this pattern, the following must be indicated: **Sewn according to a pattern by erbsünde.**



Topstitch the button placket in place, and repeat the process on the other side.



Now it's time to hem the jacket. Fold the hem allowance at the bottom edge of the jacket inward and pin it in place.

Instructions for sewing the jacket with a hem facing can be found starting on page 28.



Edge-stitch the hem to secure it.

Legal Notice

All rights to this pattern are owned by Ilka Matthiessen, erbsünde. The pattern may be used for personal purposes. For commercial use, a maximum of 20 finished garments can be made and sold without a license. For the commercial production of more than 20 garments, a business license must be purchased in advance at www.erbsuende.com. Mass production of garments made from this pattern is prohibited. Distribution, resale, exchange, copying, printing, or (partial) publication of this pattern are expressly prohibited—violations of copyright will result in substantial fines. When selling garments made from this pattern, the following must be indicated: **Sewn according to a pattern by erbsünde.**



This is how your jacket looks now.

If you don't want pockets, simply sew the buttonholes and attach the buttons, and your jacket is complete.



Attaching Pockets

If you want pockets on your jacket, take the first pocket piece.

Place it in front of you with the wrong side of the fabric facing up, and pin the hem allowance at the top edge inward.



Hem the pocket and repeat the process with the other pocket.

Legal Notice

All rights to this pattern are owned by Ilka Matthiessen, erbsünde. The pattern may be used for personal purposes. For commercial use, a maximum of 20 finished garments can be made and sold without a license. For the commercial production of more than 20 garments, a business license must be purchased in advance at www.erbsuende.com. Mass production of garments made from this pattern is prohibited. Distribution, resale, exchange, copying, printing, or (partial) publication of this pattern are expressly prohibited—violations of copyright will result in substantial fines. When selling garments made from this pattern, the following must be indicated: **Sewn according to a pattern by erbsünde.**

Next, take the first flap and place it in front of you with the right side of the fabric facing up.



Place the second flap right sides together on top of the first, and pin the rounded edges together. Sew the seam.



Carefully clip the seam allowance along the curve. Be sure not to cut into the seam.

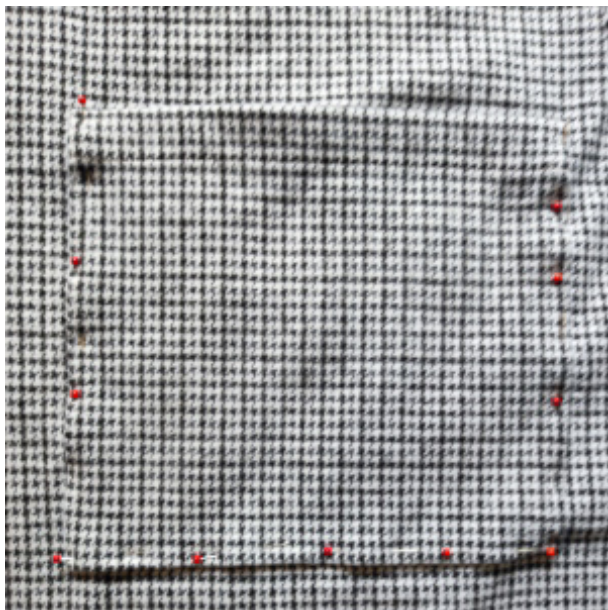
**Legal Notice**

All rights to this pattern are owned by Ilka Matthiessen, erbsünde. The pattern may be used for personal purposes. For commercial use, a maximum of 20 finished garments can be made and sold without a license. For the commercial production of more than 20 garments, a business license must be purchased in advance at www.erbsuende.com. Mass production of garments made from this pattern is prohibited. Distribution, resale, exchange, copying, printing, or (partial) publication of this pattern are expressly prohibited—violations of copyright will result in substantial fines. When selling garments made from this pattern, the following must be indicated: **Sewn according to a pattern by erbsünde.**



Turn the flap right side out and shape the edges neatly. Repeat the process with the other flap.

Press the seam allowance on the unfinished edges of the pocket inward.



Transfer the pocket position marking from the pattern onto the front piece.
Pin the pocket in place on the marking.



Make sure not to pin the pocket opening closed.

Edge-stitch the pocket in place, and repeat the process with the other pocket.

Legal Notice

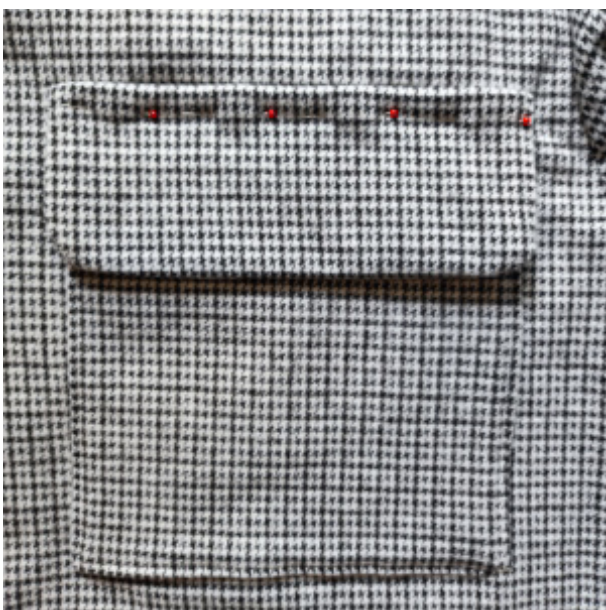
All rights to this pattern are owned by Ilka Matthiessen, erbsünde. The pattern may be used for personal purposes. For commercial use, a maximum of 20 finished garments can be made and sold without a license. For the commercial production of more than 20 garments, a business license must be purchased in advance at www.erbsuende.com. Mass production of garments made from this pattern is prohibited. Distribution, resale, exchange, copying, printing, or (partial) publication of this pattern are expressly prohibited—violations of copyright will result in substantial fines. When selling garments made from this pattern, the following must be indicated: **Sewn according to a pattern by erbsünde.**



Pin the flap in place at the marking as well.



Sew the flap in place.



Then fold the flap down and pin it in place again.

Topstitch the flap, and repeat the process with the other pocket.

Legal Notice

All rights to this pattern are owned by Ilka Matthiessen, erbsünde. The pattern may be used for personal purposes. For commercial use, a maximum of 20 finished garments can be made and sold without a license. For the commercial production of more than 20 garments, a business license must be purchased in advance at www.erbsuende.com. Mass production of garments made from this pattern is prohibited. Distribution, resale, exchange, copying, printing, or (partial) publication of this pattern are expressly prohibited—violations of copyright will result in substantial fines. When selling garments made from this pattern, the following must be indicated: **Sewn according to a pattern by erbsünde.**

This is how your jacket looks now.
You can now sew on the buttonholes and
buttons or attach the snaps.



Transfer the markings for the buttonhole
positions from the pattern onto the button
placket.



Sew the buttonholes using the buttonhole
function on your sewing machine.

If you are unsure how to proceed, it's best
to consult the manual for your sewing
machine.

Be sure to sew a test buttonhole on a
scrap piece of the jacket fabric
beforehand.

If you are working with a very thick or fluffy
fabric, we recommend using coat snaps
instead.

Legal Notice

All rights to this pattern are owned by Ilka Matthiessen, erbsünde. The pattern may be used for personal purposes. For commercial use, a maximum of 20 finished garments can be made and sold without a license. For the commercial production of more than 20 garments, a business license must be purchased in advance at www.erbsuende.com. Mass production of garments made from this pattern is prohibited. Distribution, resale, exchange, copying, printing, or (partial) publication of this pattern are expressly prohibited—violations of copyright will result in substantial fines. When selling garments made from this pattern, the following must be indicated: **Sewn according to a pattern by erbsünde.**

Cutting and Sewing Osasco with Hem Facing

If you want to sew the jacket with a hem facing, complete the jacket as described above, except for the hem.

Cut the back hem facing once in a single layer of fabric.

Cut the front hem facing once in double fabric layers.

Finish all the edges of the pieces.



Take the jacket and the first front facing.



Pin the facing right sides together to the bottom edge of the jacket.

Sew the seam.

Legal Notice

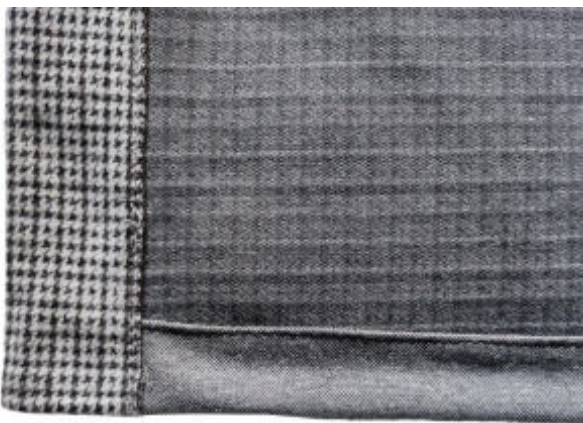
All rights to this pattern are owned by Ilka Matthiessen, erbsünde. The pattern may be used for personal purposes. For commercial use, a maximum of 20 finished garments can be made and sold without a license. For the commercial production of more than 20 garments, a business license must be purchased in advance at www.erbsuende.com. Mass production of garments made from this pattern is prohibited. Distribution, resale, exchange, copying, printing, or (partial) publication of this pattern are expressly prohibited—violations of copyright will result in substantial fines. When selling garments made from this pattern, the following must be indicated: **Sewn according to a pattern by erbsünde.**



Fold the facing inward so that it lies wrong sides together against the jacket.



Then fold the finished seam allowance of the facing inward and pin it in place. Edge-stitch the facing to secure it.



This is how the facing looks now. Repeat the process with the other facing pieces.

Legal Notice

All rights to this pattern are owned by Ilka Matthiessen, erbsünde. The pattern may be used for personal purposes. For commercial use, a maximum of 20 finished garments can be made and sold without a license. For the commercial production of more than 20 garments, a business license must be purchased in advance at www.erbsuende.com. Mass production of garments made from this pattern is prohibited. Distribution, resale, exchange, copying, printing, or (partial) publication of this pattern are expressly prohibited—violations of copyright will result in substantial fines. When selling garments made from this pattern, the following must be indicated: **Sewn according to a pattern by erbsünde.**