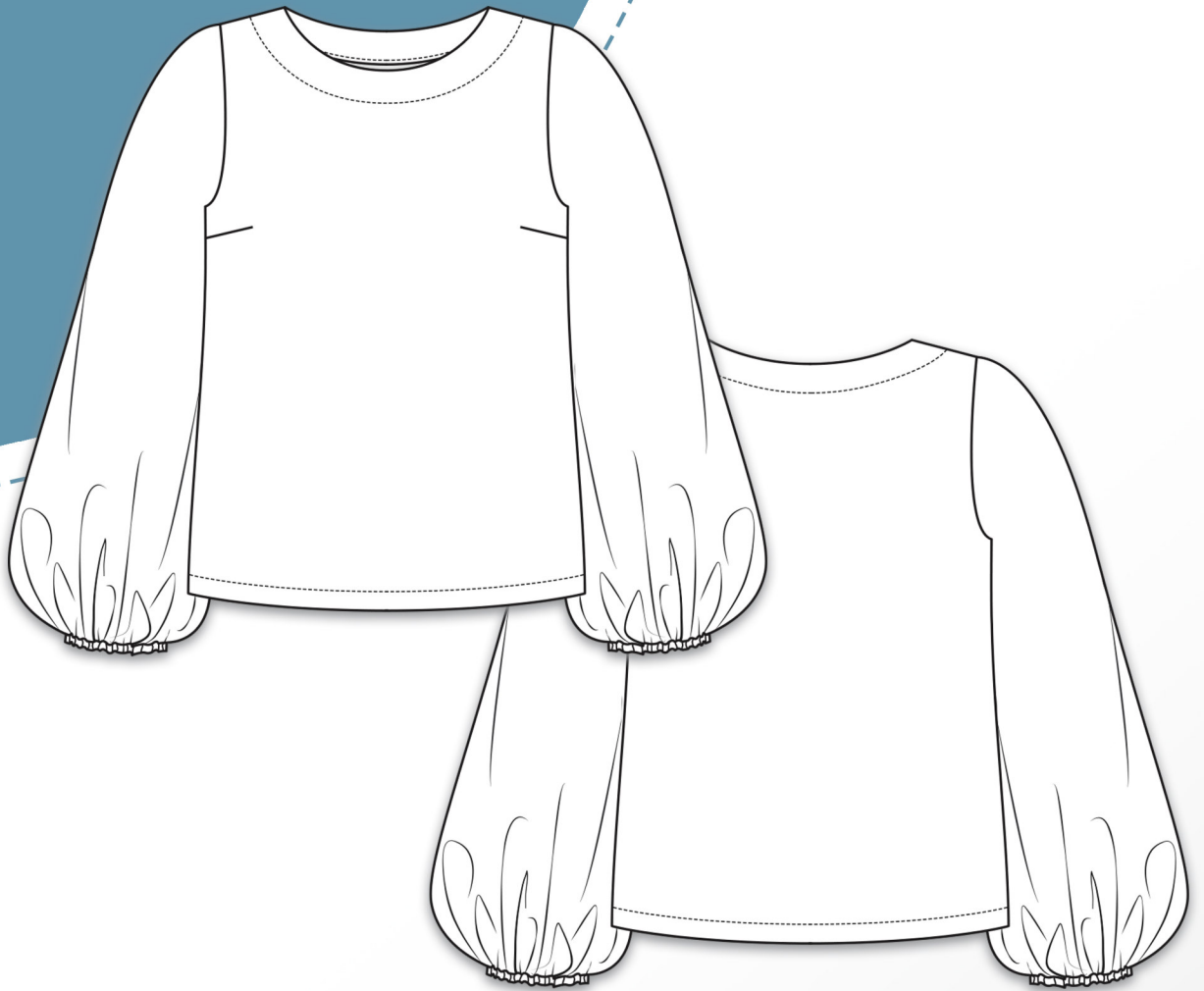


petunia

34 - 58

erbsünde



schnittmuster



sewing pattern

Foreword

I am very delighted that you have chosen a pattern from erbsünde.

Since 2013, I have poured a lot of heart and soul into creating patterns for women, men, and children. No body is shaped like another and often, store-bought clothing doesn't fit optimally. We want to move away from run-of-the-mill outfits and towards individual tops, dresses, jackets, coats, and pants, that can be made from self-chosen fabrics – even in larger sizes and shorter or longer lengths. Every pattern can be adjusted as desired and is very versatile due to numerous variants.

With this pattern, you enhance your wardrobe with favorite garments that make you feel comfortable and beautiful and accompany you throughout your day.

The detailed, illustrated instructions help you with the making - step-by-step from cutting the fabric to completing the bag. Certainly, there are some things you have not yet tried, but you can also learn with the help of the instructions and further perfect your hobby – sewing.

On my website at www.erbsuende.com (there: DIY), you will find numerous tutorials and instructions for pattern modifications.

If you have any questions, feel free to send me an email at info@erbsuende.com.

I wish you a lot of joy with your new pattern,

Your Ilka

Imprint

© erbsünde

Ilka Matthiessen

Year of Publication: 2024

Author/Creator/Copyright holder: Ilka Matthiessen

Editing/Proofreading: Ilka Matthiessen



This work, including its parts, is protected by copyright and may not be shared. Any use without the consent of the author is prohibited and expressly forbidden. This applies in particular to (even partial) electronic or other reproduction, translation, distribution, and public accessibility. All rights reserved by Ilka Matthiessen erbsünde Karlsbader Str. 8 80937 Munich, Germany info@erbsuende.com

Petunia

Table of contents

Title	
Foreword, Imprint	
Material Sheet: Fabric, required Material, important Notes	1
Cut Petunia	2 - 3
Sew Petunia with crew neck and straight sleeve hem	4 - 14
Cut Petunia mit v-neck and angled sleeve hem	14 - 15
Sew Petunia mit v-neck and angled sleeve hem	15 - 18



About **petunia**

Petunia is a loosely fitted blouse featuring bust darts and voluminous balloon sleeves. The pattern includes two neckline options: a crew neck and a V-neck, both finished with a facing. There are also two sleeve options to choose from: long balloon sleeves with a straight hem and 3/4 balloon sleeves with an angled hem—both gathered at the hem with elastic bands.

Size Chart

The following chart helps you choose the right size. The bust circumference is crucial for selecting the correct size. If your hip circumference is larger than your bust circumference, you can expand the pattern from below the bust darts to the next or even the second next size.

Size EU	34	36	38	40	42	44	46	48	50	52	54	56	58
Bust Circumference	up to 90cm	up to 94cm	up to 98cm	up to 102cm	up to 106cm	up to 111cm	up to 116cm	up to 121cm	up to 126cm	up to 130cm	up to 135cm	up to 140cm	up to 145cm
Hip Circumference	up to 90cm	up to 93cm	up to 97cm	up to 100cm	up to 105cm	up to 110cm	up to 115cm	up to 120cm	up to 125cm	up to 130cm	up to 135cm	up to 140cm	up to 145cm

Fabric Recommendations

Petunia is best suited for lightweight, non-stretch fabrics such as cotton, viscose, double gauze, linen, poplin, voile, chiffon, etc.

Fabric Amount for a Fabric Width of 1.45m

Size EU	34	36	38	40	42	44	46	48	50	52	54	56	58
Fabric Length	2.2m	2.2m	2.2m	2.5m	2.5m	2.5m	2.5m	3m	3m	3m	3m	3m	3m

Seam and Hem Allowances

The pattern does not include seam and hem allowances; these must be added individually when cutting the fabric.

Required Materials

- Fabric (as mentioned above)
- 0.5 cm wide elastic for sleeve hems
- Vline for reinforcing the facing (if needed)
- Tape for assembling the pattern pieces
- Scissors, measuring tape, pins or clips
- Sewing machine, overlock/coverlock machine (if available), iron

Important Notes

- Before cutting, please read the entire instruction manual!
- To correctly open and print the pattern, please use the latest version of Adobe Acrobat Reader.
- Ensure that the print settings are set to either 100% or "actual size" to avoid scaling.

Legal Notices:

All rights to this pattern are owned by Ilka Matthiessen, erbsünde. The pattern may be used for personal purposes only. For commercial use of the pattern, a maximum of up to 20 finished garments may be made and sold without a license. For commercial production of more than 20 garments, a commercial license must be acquired from www.erbsuende.com. Mass production of garments made from this pattern is prohibited. The distribution, resale, exchange, copying, reproduction, or (partial) publication of this pattern is strictly prohibited - violations of copyright will result in severe monetary penalties. When selling garments made from this pattern, it must be indicated: **Sewn using a pattern from erbsünde.**



Cut Petunia

Choose your desired neckline. Here, we have chosen the crew neck. Instructions for the V-neck start on page 15.

Fold the fabric with the wrong sides together.

Place the front pattern piece along the edge with the marking "center front/foldline."

Cut the front piece once on the fold.

This pattern piece will be serged later.



The back piece is also cut once on the fold. Serge the edges of the pattern piece.



Choose the desired sleeve from the pattern.

Here, we have chosen the straight balloon sleeve. Instructions for sewing the angled hem sleeve start on page 15.

Cut the sleeves once on double layer fabric.

Serge the edges of the pattern pieces.

Legal Notices:

All rights to this pattern are owned by Ilka Matthiessen, erbsünde. The pattern may be used for personal purposes only. For commercial use of the pattern, a maximum of up to 20 finished garments may be made and sold without a license. For commercial production of more than 20 garments, a commercial license must be acquired from www.erbsuende.com. Mass production of garments made from this pattern is prohibited. The distribution, resale, exchange, copying, reproduction, or (partial) publication of this pattern is strictly prohibited - violations of copyright will result in severe monetary penalties. When selling garments made from this pattern, it must be indicated: **Sewn using a pattern from erbsünde.**

Cut front and back facing each in a single layer of fabric.

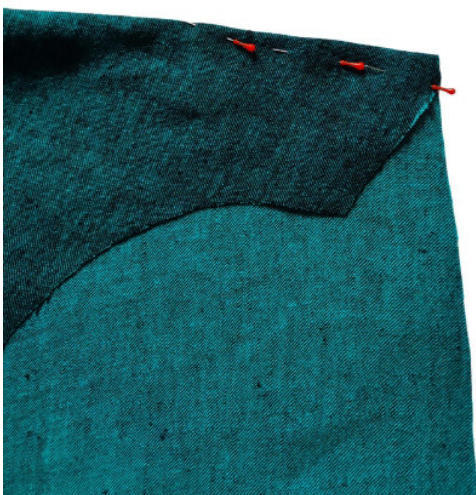
Serge the edges of the pattern pieces.



Sew Petunia

First, sew the bust darts.

Transfer the position of the bust darts from the pattern onto the front piece.



Pin the dart together along the markings with right sides facing each other.

Legal Notices:

All rights to this pattern are owned by Ilka Matthiessen, erbsünde. The pattern may be used for personal purposes only. For commercial use of the pattern, a maximum of up to 20 finished garments may be made and sold without a license. For commercial production of more than 20 garments, a commercial license must be acquired from www.erbsuende.com. Mass production of garments made from this pattern is prohibited. The distribution, resale, exchange, copying, reproduction, or (partial) publication of this pattern is strictly prohibited - violations of copyright will result in severe monetary penalties. When selling garments made from this pattern, it must be indicated: **Sewn using a pattern from erbsünde.**

Sew the dart along the markings using a straight stitch on the sewing machine.



Press the dart downwards and repeat the process for the other bust dart. Now your front piece should look like this.

Serge the edges of the front piece.



Now take the back piece and lay it in front of you with the right side of the fabric facing up.



Legal Notices:

All rights to this pattern are owned by Ilka Matthiessen, erbsünde. The pattern may be used for personal purposes only. For commercial use of the pattern, a maximum of up to 20 finished garments may be made and sold without a license. For commercial production of more than 20 garments, a commercial license must be acquired from www.erbsuende.com. Mass production of garments made from this pattern is prohibited. The distribution, resale, exchange, copying, reproduction, or (partial) publication of this pattern is strictly prohibited - violations of copyright will result in severe monetary penalties. When selling garments made from this pattern, it must be indicated: **Sewn using a pattern from erbsünde.**

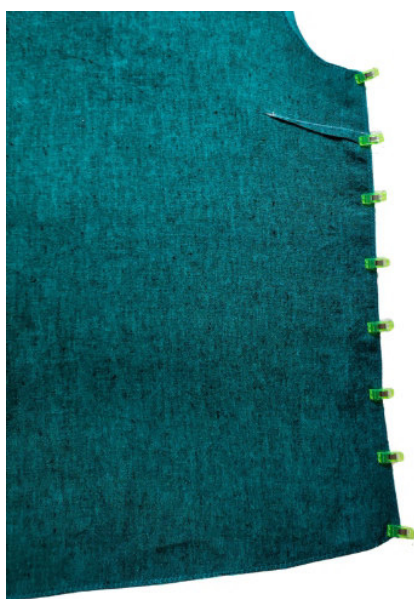
Place the front piece with the darts right side down on top of it.



Pin the shoulder edges together and sew the seam. Repeat the process with the other shoulder edges.



Next, align the side edges of the front and back pieces together and pin them. Sew the side seam and repeat on the other side.



Legal Notices:

All rights to this pattern are owned by Ilka Matthiessen, erbsünde. The pattern may be used for personal purposes only. For commercial use of the pattern, a maximum of up to 20 finished garments may be made and sold without a license. For commercial production of more than 20 garments, a commercial license must be acquired from www.erbsuende.com. Mass production of garments made from this pattern is prohibited. The distribution, resale, exchange, copying, reproduction, or (partial) publication of this pattern is strictly prohibited - violations of copyright will result in severe monetary penalties. When selling garments made from this pattern, it must be indicated: **Sewn using a pattern from erbsünde.**

Now take the first sleeve and lay it in front of you with the right side of the fabric facing up.



Fold the sleeve right sides together and align the underarm edges. Pin them together and sew the seam.



Fold the sleeve hem inward. Pin it in place and sew all around, making sure to leave an opening to thread the elastic through the casing.

**Legal Notices:**

All rights to this pattern are owned by Ilka Matthiessen, erbsünde. The pattern may be used for personal purposes only. For commercial use of the pattern, a maximum of up to 20 finished garments may be made and sold without a license. For commercial production of more than 20 garments, a commercial license must be acquired from www.erbsuende.com. Mass production of garments made from this pattern is prohibited. The distribution, resale, exchange, copying, reproduction, or (partial) publication of this pattern is strictly prohibited - violations of copyright will result in severe monetary penalties. When selling garments made from this pattern, it must be indicated: **Sewn using a pattern from erbsünde.**



Cut two pieces of elastic that are 2 cm longer than the circumference of your wrist.

Thread the elastic through the tunnel at the sleeve hem using a safety pin.



Pin the two ends of the elastic together and sew them with a few stitches to form a ring. Then, sew closed the opening in the sleeve hem through which the elastic was threaded.



Turn the sleeve right side out. Now your balloon sleeve with elastic looks like this.

Repeat the process with the other sleeve.

Legal Notices:

All rights to this pattern are owned by Ilka Matthiessen, erbsünde. The pattern may be used for personal purposes only. For commercial use of the pattern, a maximum of up to 20 finished garments may be made and sold without a license. For commercial production of more than 20 garments, a commercial license must be acquired from www.erbsuende.com. Mass production of garments made from this pattern is prohibited. The distribution, resale, exchange, copying, reproduction, or (partial) publication of this pattern is strictly prohibited - violations of copyright will result in severe monetary penalties. When selling garments made from this pattern, it must be indicated: **Sewn using a pattern from erbsünde.**



The sleeves have slight ease to ensure there is enough freedom of movement. To ease the sleeves neatly into place, they need to be gathered.

To do this, sew two parallel rows of long straight stitches (stitch length 4.5 - 5) within the seam allowance along the sleeve cap.

Caution: Do not backstitch or lock the stitches at the beginning or end.



The stitching will naturally cause the sleeve cap to curve inward slightly.



This is how your gathered sleeve looks from the wrong side.

Legal Notices:

All rights to this pattern are owned by Ilka Matthiessen, erbsünde. The pattern may be used for personal purposes only. For commercial use of the pattern, a maximum of up to 20 finished garments may be made and sold without a license. For commercial production of more than 20 garments, a commercial license must be acquired from www.erbsuende.com. Mass production of garments made from this pattern is prohibited. The distribution, resale, exchange, copying, reproduction, or (partial) publication of this pattern is strictly prohibited - violations of copyright will result in severe monetary penalties. When selling garments made from this pattern, it must be indicated: **Sewn using a pattern from erbsünde.**



Now it's time to set in the sleeves.
Place the top with the wrong side facing
outwards, and the sleeve with the right
side facing outwards.



Insert the sleeve through the armhole of
the top.



Pin the sleeve right sides together into the
armhole. Align the underarm seam of the
sleeve precisely with the side seam of the
blouse. If the sleeve is too wide, adjust the
ease using the gathering stitches.

Sew around the sleeve to attach it
securely, and repeat the process with the
other sleeve.

Legal Notices:

All rights to this pattern are owned by Ilka Matthiessen, erbsünde. The pattern may be used for personal purposes only. For commercial use of the pattern, a maximum of up to 20 finished garments may be made and sold without a license. For commercial production of more than 20 garments, a commercial license must be acquired from www.erbsuende.com. Mass production of garments made from this pattern is prohibited. The distribution, resale, exchange, copying, reproduction, or (partial) publication of this pattern is strictly prohibited - violations of copyright will result in severe monetary penalties. When selling garments made from this pattern, it must be indicated: **Sewn using a pattern from erbsünde.**



Turn the blouse right side out.
This is how the inserted sleeve looks.



This is what your blouse looks like now.



Now take the back facing and place it in front of you with the right side of the fabric facing up.

Legal Notices:

All rights to this pattern are owned by Ilka Matthiessen, erbsünde. The pattern may be used for personal purposes only. For commercial use of the pattern, a maximum of up to 20 finished garments may be made and sold without a license. For commercial production of more than 20 garments, a commercial license must be acquired from www.erbsuende.com. Mass production of garments made from this pattern is prohibited. The distribution, resale, exchange, copying, reproduction, or (partial) publication of this pattern is strictly prohibited - violations of copyright will result in severe monetary penalties. When selling garments made from this pattern, it must be indicated: **Sewn using a pattern from erbsünde.**

Next, place the front facing right sides together on top of it. Pin the shoulder edges together and sew the seams.



Now take the blouse.



Pin the facing right sides together around the neckline of the blouse.
Sew the seam.



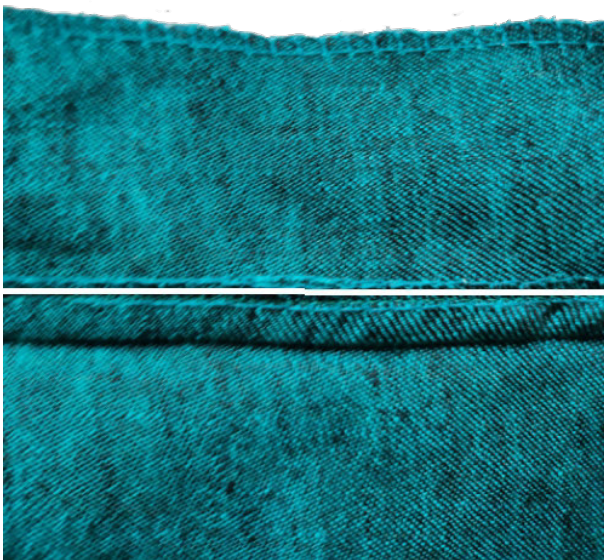
RLegal Notices:

All rights to this pattern are owned by Ilka Matthiessen, erbsünde. The pattern may be used for personal purposes only. For commercial use of the pattern, a maximum of up to 20 finished garments may be made and sold without a license. For commercial production of more than 20 garments, a commercial license must be acquired from www.erbsuende.com. Mass production of garments made from this pattern is prohibited. The distribution, resale, exchange, copying, reproduction, or (partial) publication of this pattern is strictly prohibited - violations of copyright will result in severe monetary penalties. When selling garments made from this pattern, it must be indicated: **Sewn using a pattern from erbsünde.**

Now press the seam allowances at the neckline towards the facing.



Then edge-stitch the seam allowances close to the facing.

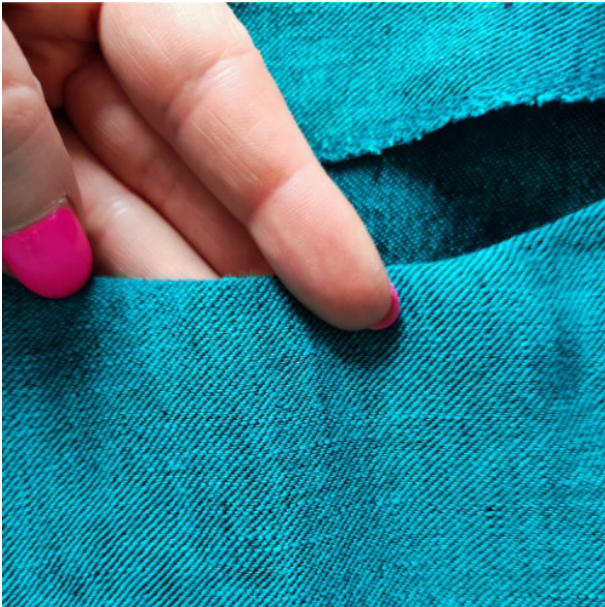


Fold the facing inward so that it lies inside the blouse, with wrong sides together. This is how your facing looks from the right side of the fabric now. You can see the edge stitching here.



Legal Notices:

All rights to this pattern are owned by Ilka Matthiessen, erbsünde. The pattern may be used for personal purposes only. For commercial use of the pattern, a maximum of up to 20 finished garments may be made and sold without a license. For commercial production of more than 20 garments, a commercial license must be acquired from www.erbsuende.com. Mass production of garments made from this pattern is prohibited. The distribution, resale, exchange, copying, reproduction, or (partial) publication of this pattern is strictly prohibited - violations of copyright will result in severe monetary penalties. When selling garments made from this pattern, it must be indicated: **Sewn using a pattern from erbsünde.**



This is how the neckline of your blouse looks from the right side of the fabric. There are no visible seams. Steam the edge thoroughly once more.

This is how your round neckline with facing looks when completed.



To finish, hem the blouse. Fold the seam allowance at the bottom edge of the blouse to the inside and sew it securely all around.

**RLegal Notices:**

All rights to this pattern are owned by Ilka Matthiessen, erbsünde. The pattern may be used for personal purposes only. For commercial use of the pattern, a maximum of up to 20 finished garments may be made and sold without a license. For commercial production of more than 20 garments, a commercial license must be acquired from www.erbsuende.com. Mass production of garments made from this pattern is prohibited. The distribution, resale, exchange, copying, reproduction, or (partial) publication of this pattern is strictly prohibited - violations of copyright will result in severe monetary penalties. When selling garments made from this pattern, it must be indicated: **Sewn using a pattern from erbsünde.**

Your blouse with a round neckline and straight balloon sleeves is complete.



If you'd like to shorten the balloon sleeves, simply cut them at the desired length at the bottom and hem them again. No adjustment to the sleeve pattern is necessary for this design, as the sleeves are very wide.

Cut Petunia with a V-neckline and angled balloon sleeves

Select the V-neckline option on the front piece of the pattern. Proceed to cut out the front and back pieces as described earlier. Serge the edges of the back piece. The front piece will be finished after sewing the bust darts.



Choose the angled balloon sleeves from the pattern. Cut the angled balloon sleeves once in double-layered fabric. Serge the cut edges of the pattern pieces.



Legal Notices:

All rights to this pattern are owned by Ilka Matthiessen, erbsünde. The pattern may be used for personal purposes only. For commercial use of the pattern, a maximum of up to 20 finished garments may be made and sold without a license. For commercial production of more than 20 garments, a commercial license must be acquired from www.erbsuende.com. Mass production of garments made from this pattern is prohibited. The distribution, resale, exchange, copying, reproduction, or (partial) publication of this pattern is strictly prohibited - violations of copyright will result in severe monetary penalties. When selling garments made from this pattern, it must be indicated: **Sewn using a pattern from erbsünde.**

Select the front facing pattern piece for the V-neckline.



Cut out the V-neckline facing and the back facing once in single-layer fabric.

Finish the cut edges.

We've used a solid-colored fabric for the facing to prevent it from showing through the light fabric.



Sew Petunia with a V-neckline and angled balloon sleeves

Sew the bust darts on the front piece as described earlier, then finish the edges of the front piece. Next, sew the front and back pieces of the blouse together at the shoulders and sides as described previously.



Now take the first angled balloon sleeve and lay it in front of you with the right side of the fabric facing up.



Legal Notices:

All rights to this pattern are owned by Ilka Matthiessen, erbsünde. The pattern may be used for personal purposes only. For commercial use of the pattern, a maximum of up to 20 finished garments may be made and sold without a license. For commercial production of more than 20 garments, a commercial license must be acquired from www.erbsuende.com. Mass production of garments made from this pattern is prohibited. The distribution, resale, exchange, copying, reproduction, or (partial) publication of this pattern is strictly prohibited - violations of copyright will result in severe monetary penalties. When selling garments made from this pattern, it must be indicated: **Sewn using a pattern from erbsünde.**

Fold the sleeve right sides together and align the underarm edges. Pin them together and sew the seam.



Then fold the hem of the angled balloon sleeve inward and pin it in place. Hem the sleeve, making sure to leave an opening through which you can thread elastic.



Cut a piece of elastic that is 5 cm longer than the circumference of your arm below the elbow. Thread the elastic through the sleeve hem using a safety pin. Close the elastic into a loop as described earlier and then close the opening in the sleeve hem. Repeat the process with the other sleeve.

**Legal Notices:**

All rights to this pattern are owned by Ilka Matthiessen, erbsünde. The pattern may be used for personal purposes only. For commercial use of the pattern, a maximum of up to 20 finished garments may be made and sold without a license. For commercial production of more than 20 garments, a commercial license must be acquired from www.erbsuende.com. Mass production of garments made from this pattern is prohibited. The distribution, resale, exchange, copying, reproduction, or (partial) publication of this pattern is strictly prohibited - violations of copyright will result in severe monetary penalties. When selling garments made from this pattern, it must be indicated: **Sewn using a pattern from erbsünde.**

Next, gather the sleeves as described on page 8, then proceed to insert them into the blouse as described from page 9 onwards.



Now take the back facing and lay it in front of you with the right side of the fabric facing up. Place the V-neckline facing right sides together on top of it. Pin the shoulder edges together and sew the seams.



Now take the blouse again. Pin the facing right sides together around the neckline. Sew the facing securely all around.

**Legal Notices:**

All rights to this pattern are owned by Ilka Matthiessen, erbsünde. The pattern may be used for personal purposes only. For commercial use of the pattern, a maximum of up to 20 finished garments may be made and sold without a license. For commercial production of more than 20 garments, a commercial license must be acquired from www.erbsuende.com. Mass production of garments made from this pattern is prohibited. The distribution, resale, exchange, copying, reproduction, or (partial) publication of this pattern is strictly prohibited - violations of copyright will result in severe monetary penalties. When selling garments made from this pattern, it must be indicated: **Sewn using a pattern from erbsünde.**



Carefully clip the V-neckline at the center front. Be sure not to cut through the seam.



Turn the facing inward and press the neckline. Then, topstitch the facing as described on page 12.



Hem the blouse as described on page 13. Your blouse with a V-neckline and angled balloon sleeves is complete.

Legal Notices:

All rights to this pattern are owned by Ilka Matthiessen, erbsünde. The pattern may be used for personal purposes only. For commercial use of the pattern, a maximum of up to 20 finished garments may be made and sold without a license. For commercial production of more than 20 garments, a commercial license must be acquired from www.erbsuende.com. Mass production of garments made from this pattern is prohibited. The distribution, resale, exchange, copying, reproduction, or (partial) publication of this pattern is strictly prohibited - violations of copyright will result in severe monetary penalties. When selling garments made from this pattern, it must be indicated: **Sewn using a pattern from erbsünde.**