

praia

34 - 60

erbsünde



schnittmuster



sewing pattern

Foreword

I am very delighted that you have chosen a pattern from erbsünde.

Since 2013, I have poured a lot of heart and soul into creating patterns for women, men, and children. No body is shaped like another and often, store-bought clothing doesn't fit optimally. We want to move away from run-of-the-mill outfits and towards individual tops, dresses, jackets, coats, and pants, that can be made from self-chosen fabrics – even in larger sizes and shorter or longer lengths. Every pattern can be adjusted as desired and is very versatile due to numerous variants.

With this pattern, you enhance your wardrobe with favorite garments that make you feel comfortable and beautiful and accompany you throughout your day.

The detailed, illustrated instructions help you with the making - step-by-step from cutting the fabric to completing the bag. Certainly, there are some things you have not yet tried, but you can also learn with the help of the instructions and further perfect your hobby – sewing.

On my website at www.erbsuende.com (there: DIY), you will find numerous tutorials and instructions for pattern modifications.

If you have any questions, feel free to send me an email at info@erbsuende.com.

I wish you a lot of joy with your new pattern,

Your Ilka

Imprint

© erbsünde

Ilka Matthiessen

Year of Publication: 2024

Author/Creator/Copyright holder: Ilka Matthiessen

Editing/Proofreading: Ilka Matthiessen



This work, including its parts, is protected by copyright and may not be shared. Any use without the consent of the author is prohibited and expressly forbidden. This applies in particular to (even partial) electronic or other reproduction, translation, distribution, and public accessibility. All rights reserved by Ilka Matthiessen erbsünde Karlsbader Str. 8 80937 Munich, Germany info@erbsuende.com

About Praia

Praia is a loosely fitted, airy dress with a V-neckline and side seam pockets. You can choose between dropped shoulders with a sleeve band or a longer sleeve. The dress is approximately 100 cm long as per the pattern and can also be shortened to create an airy blouse.

Body Measurement Chart

The following table helps you choose the right size. The bust measurement is crucial for selecting the correct size. If your hip measurement is larger than your bust measurement, you can adjust the pattern: <https://erbsuende.com/2019/10/17/tutorial-schnittmuster-groessenanpassung/>.

Size EU	34	36	38	40	42	44	46	48	50	52	54	56	58	60
Bust Circumference	up to 90cm	up to 94cm	up to 98cm	up to 102cm	up to 106cm	up to 111cm	up to 116cm	up to 121cm	up to 126cm	up to 130cm	up to 135cm	up to 140cm	up to 145cm	up to 150cm
Hip Circumference	up to 90cm	up to 93cm	up to 97cm	up to 100cm	up to 105cm	up to 110cm	up to 115cm	up to 120cm	up to 125cm	up to 130cm	up to 135cm	up to 140cm	up to 145cm	up to 150cm

Fabric Recommendation

Suitable fabrics for the dress include drapery, non-stretch materials such as viscose, Tencel, linen, muslin, poplin, voile, etc.

Fabric Requirements for a Fabric Width of 1.45m

Size EU	34	36	38	40	42	44	46	48	50	52	54	56	58	60
Fabric Length	2m	2m	2m	2m	2.5m	2.5m	2.5m	2.5m	2.5m	3m	3m	3m	3m	3m

Seam and Hem Allowances

The pattern does not include seam and hem allowances; these need to be added individually when cutting.

Required Materials

- Fabric (see above)
- Interfacing for reinforcing the pocket openings (if needed)
- Tape for assembling the pattern
- Scissors, measuring tape, pins or clips
- Sewing machine, overlock/coverlock (if available), iron

Important Notes

- Before cutting, please read the entire instructions first!
- To open and print the pattern correctly, please use the latest version of Adobe Acrobat Reader.
- When printing, ensure that the setting is either 100% or "actual size".

Legal Notice

All rights to this pattern are owned by Ilka Matthiessen, erbsünde. The pattern may be used for personal purposes. For commercial use of the pattern, a maximum of 20 finished garments may be made and sold without a license. For the commercial production of more than 20 garments, a commercial license must be purchased in advance at www.erbsuende.com. Mass production of garments made from this pattern is prohibited. Distribution, resale, exchange, copying, printing, or (partial) publication of this pattern is expressly prohibited – violations of copyright will result in significant fines. When selling garments made from this pattern, please include the following statement: **Made with a pattern by erbsünde.**



Cutting Praia

Fold the fabric wrong sides together and place the pattern piece for the front with the "front center/fold" marking along the edge.

Cut it once on the fold.

Serge the edges of the pattern piece.



Fold the fabric wrong sides together and place the pattern piece for the back with the "back center/fold" marking along the edge.

Cut it once on the fold.

Serge the edges of the pattern piece.



Cut the "front neckline" pattern piece once in double fabric layers.

Serge the edges of the pattern pieces.

Legal Notice

All rights to this pattern are owned by Ilka Matthiessen, erbsünde. The pattern may be used for personal purposes. For commercial use of the pattern, a maximum of 20 finished garments may be made and sold without a license. For the commercial production of more than 20 garments, a commercial license must be purchased in advance at www.erbsuende.com. Mass production of garments made from this pattern is prohibited. Distribution, resale, exchange, copying, printing, or (partial) publication of this pattern is expressly prohibited – violations of copyright will result in significant fines. When selling garments made from this pattern, please include the following statement: **Made with a pattern by erbsünde.**

Cut the back facing pattern piece once in a single layer of fabric.
Serge the edges of the pattern piece.

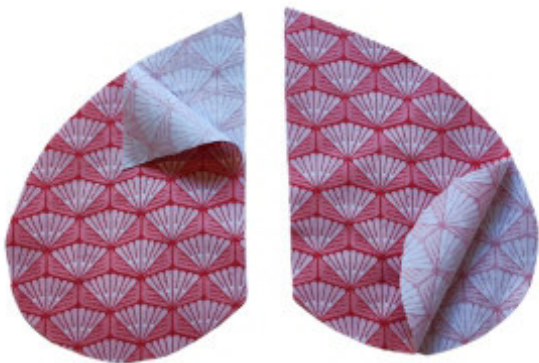


Cut the sleeve band pattern piece once in double fabric layers.
Finish the edges of the pattern pieces.



If you prefer to simply hem the sleeves, omit this pattern piece and follow the instructions for the longer sleeve as described on page 33.

Cut the pocket pieces twice in double fabric layers. You will have 4 pieces.
Serge the edges of the pattern pieces.



Legal Notice

All rights to this pattern are owned by Ilka Matthiessen, erbsünde. The pattern may be used for personal purposes. For commercial use of the pattern, a maximum of 20 finished garments may be made and sold without a license. For the commercial production of more than 20 garments, a commercial license must be purchased in advance at www.erbsuende.com. Mass production of garments made from this pattern is prohibited. Distribution, resale, exchange, copying, printing, or (partial) publication of this pattern is expressly prohibited – violations of copyright will result in significant fines. When selling garments made from this pattern, please include the following statement: **Made with a pattern by erbsünde.**



Sewing Praia

Take the front piece and place it right side up in front of you.

Transfer the pocket opening markings from the pattern to the front piece.



Then take the first pocket piece.



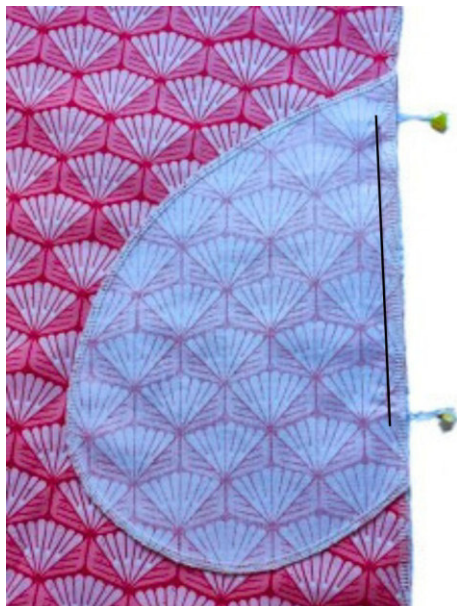
If you are using a thin fabric, reinforce the edge of the pocket piece with interfacing.

Then place the pocket piece right sides together on the front piece. The markings on the pocket and the front piece should align.

Pin the edges together between the markings.

Legal Notice

All rights to this pattern are owned by Ilka Matthiessen, erbsünde. The pattern may be used for personal purposes. For commercial use of the pattern, a maximum of 20 finished garments may be made and sold without a license. For the commercial production of more than 20 garments, a commercial license must be purchased in advance at www.erbsuende.com. Mass production of garments made from this pattern is prohibited. Distribution, resale, exchange, copying, printing, or (partial) publication of this pattern is expressly prohibited – violations of copyright will result in significant fines. When selling garments made from this pattern, please include the following statement: **Made with a pattern by erbsünde.**



Sew the pocket piece to the front piece between the markings.



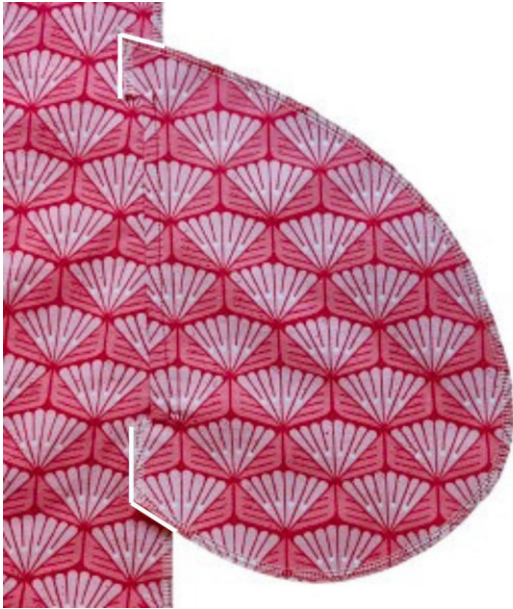
Carefully clip the seam allowances of both the pocket piece and the front piece at the top and bottom markings. Be sure not to cut into the seam.



Flip the pocket piece outward. The seam allowance of the pocket piece above and below the clip will be laid right side up on the front piece.

Legal Notice

All rights to this pattern are owned by Ilka Matthiessen, erbsünde. The pattern may be used for personal purposes. For commercial use of the pattern, a maximum of 20 finished garments may be made and sold without a license. For the commercial production of more than 20 garments, a commercial license must be purchased in advance at www.erbsuende.com. Mass production of garments made from this pattern is prohibited. Distribution, resale, exchange, copying, printing, or (partial) publication of this pattern is expressly prohibited – violations of copyright will result in significant fines. When selling garments made from this pattern, please include the following statement: **Made with a pattern by erbsünde.**



This is what the flipped-out pocket piece looks like now.



Topstitch the pocket piece close to the edge between the clips onto the seam allowance of the front piece.



Then fold the pocket piece inward so that it lies wrong sides together on the front piece.
The seam allowance of the front piece extends above and below the pocket opening.

Legal Notice

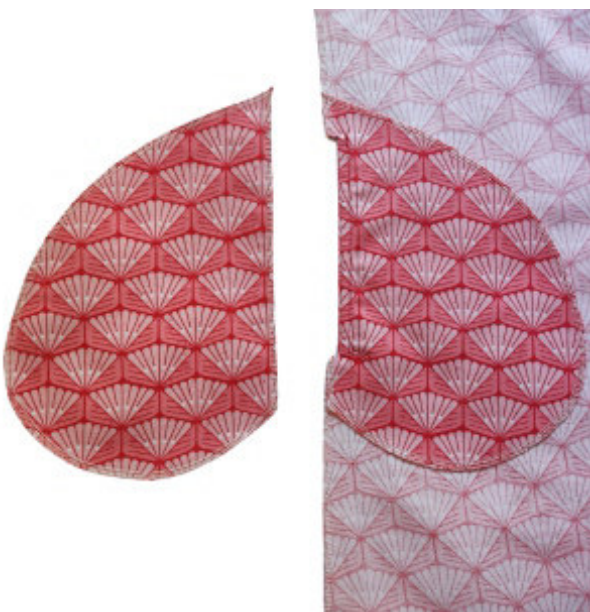
All rights to this pattern are owned by Ilka Matthiessen, erbsünde. The pattern may be used for personal purposes. For commercial use of the pattern, a maximum of 20 finished garments may be made and sold without a license. For the commercial production of more than 20 garments, a commercial license must be purchased in advance at www.erbsuende.com. Mass production of garments made from this pattern is prohibited. Distribution, resale, exchange, copying, printing, or (partial) publication of this pattern is expressly prohibited – violations of copyright will result in significant fines. When selling garments made from this pattern, please include the following statement: **Made with a pattern by erbsünde.**



This is what the front piece with the pocket looks like from the right side of the fabric.



Topstitch the pocket opening close to the edge.



Place the front piece wrong side up in front of you.
Now take the second pocket piece.

Legal Notice

All rights to this pattern are owned by Ilka Matthiessen, erbsünde. The pattern may be used for personal purposes. For commercial use of the pattern, a maximum of 20 finished garments may be made and sold without a license. For the commercial production of more than 20 garments, a commercial license must be purchased in advance at www.erbsuende.com. Mass production of garments made from this pattern is prohibited. Distribution, resale, exchange, copying, printing, or (partial) publication of this pattern is expressly prohibited – violations of copyright will result in significant fines. When selling garments made from this pattern, please include the following statement: **Made with a pattern by erbsünde.**



Place the second pocket piece right sides together on top of the first pocket piece. Pin the curved edges together and sew the seam.



This is what your pocket looks like from the right side of the fabric now.



The seam allowance of the lower pocket piece forms a straight edge with the seam allowance of the front piece. Repeat the process with the second pocket on the other side of the front piece.

Legal Notice

All rights to this pattern are owned by Ilka Matthiessen, erbsünde. The pattern may be used for personal purposes. For commercial use of the pattern, a maximum of 20 finished garments may be made and sold without a license. For the commercial production of more than 20 garments, a commercial license must be purchased in advance at www.erbsuende.com. Mass production of garments made from this pattern is prohibited. Distribution, resale, exchange, copying, printing, or (partial) publication of this pattern is expressly prohibited – violations of copyright will result in significant fines. When selling garments made from this pattern, please include the following statement: **Made with a pattern by erbsünde.**

Then take the first "front neckline" pattern piece.



Fold the pattern piece wrong sides together.



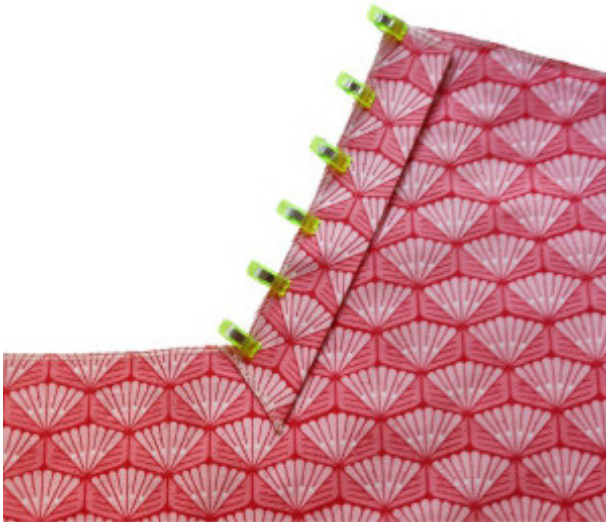
Now take the front piece again.



Legal Notice

All rights to this pattern are owned by Ilka Matthiessen, erbsünde. The pattern may be used for personal purposes. For commercial use of the pattern, a maximum of 20 finished garments may be made and sold without a license. For the commercial production of more than 20 garments, a commercial license must be purchased in advance at www.erbsuende.com. Mass production of garments made from this pattern is prohibited. Distribution, resale, exchange, copying, printing, or (partial) publication of this pattern is expressly prohibited – violations of copyright will result in significant fines. When selling garments made from this pattern, please include the following statement: **Made with a pattern by erbsünde.**

Pin the front neckline pattern piece with the raw edges right sides together to the first diagonal edge of the front neckline. Sew the seam.



Carefully clip the seam allowances at the bottom corner of the neckline.



Be sure not to cut into the seam.



Legal Notice

All rights to this pattern are owned by Ilka Matthiessen, erbsünde. The pattern may be used for personal purposes. For commercial use of the pattern, a maximum of 20 finished garments may be made and sold without a license. For the commercial production of more than 20 garments, a commercial license must be purchased in advance at www.erbsuende.com. Mass production of garments made from this pattern is prohibited. Distribution, resale, exchange, copying, printing, or (partial) publication of this pattern is expressly prohibited – violations of copyright will result in significant fines. When selling garments made from this pattern, please include the following statement: **Made with a pattern by erbsünde.**

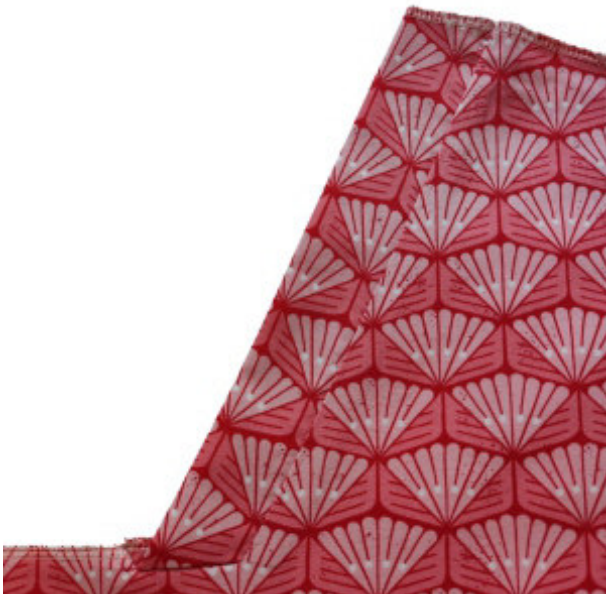
Fold the front piece down at the neckline.



Now pin the short edge of the front neckline pattern piece right sides together to the straight edge of the neckline of the front piece.
Sew the seam.



This is what your neckline looks like now.



Legal Notice

All rights to this pattern are owned by Ilka Matthiessen, erbsünde. The pattern may be used for personal purposes. For commercial use of the pattern, a maximum of 20 finished garments may be made and sold without a license. For the commercial production of more than 20 garments, a commercial license must be purchased in advance at www.erbsuende.com. Mass production of garments made from this pattern is prohibited. Distribution, resale, exchange, copying, printing, or (partial) publication of this pattern is expressly prohibited – violations of copyright will result in significant fines. When selling garments made from this pattern, please include the following statement: **Made with a pattern by erbsünde.**

Repeat the process on the other side of the neckline.



Press the seam allowance along the straight edge of the neckline inward.



Now fold the edges of the neckline over each other.

Legal Notice

All rights to this pattern are owned by Ilka Matthiessen, erbsünde. The pattern may be used for personal purposes. For commercial use of the pattern, a maximum of 20 finished garments may be made and sold without a license. For the commercial production of more than 20 garments, a commercial license must be purchased in advance at www.erbsuende.com. Mass production of garments made from this pattern is prohibited. Distribution, resale, exchange, copying, printing, or (partial) publication of this pattern is expressly prohibited – violations of copyright will result in significant fines. When selling garments made from this pattern, please include the following statement: **Made with a pattern by erbsünde.**



The lower corner of the upper neckline must exactly match the lower outer corner of the back neckline.



This is what the overlapped neckline looks like now.



Pin the fold in place.

Legal Notice

All rights to this pattern are owned by Ilka Matthiessen, erbsünde. The pattern may be used for personal purposes. For commercial use of the pattern, a maximum of 20 finished garments may be made and sold without a license. For the commercial production of more than 20 garments, a commercial license must be purchased in advance at www.erbsuende.com. Mass production of garments made from this pattern is prohibited. Distribution, resale, exchange, copying, printing, or (partial) publication of this pattern is expressly prohibited – violations of copyright will result in significant fines. When selling garments made from this pattern, please include the following statement: **Made with a pattern by erbsünde.**



Stitch the overlap in the seam line to secure the fold in place.



This is what your front piece with the fold looks like from the right side of the fabric now.



This is what the fold looks like from the wrong side of the fabric, with the overlap extending slightly.

Legal Notice

All rights to this pattern are owned by Ilka Matthiessen, erbsünde. The pattern may be used for personal purposes. For commercial use of the pattern, a maximum of 20 finished garments may be made and sold without a license. For the commercial production of more than 20 garments, a commercial license must be purchased in advance at www.erbsuende.com. Mass production of garments made from this pattern is prohibited. Distribution, resale, exchange, copying, printing, or (partial) publication of this pattern is expressly prohibited – violations of copyright will result in significant fines. When selling garments made from this pattern, please include the following statement: **Made with a pattern by erbsünde.**

Now take the back piece and place it right side up in front of you.



Then take the back facing and place it right sides together on the back piece. Pin the facing in place. Sew the seam.



Fold the facing inward and press the edge carefully.



Legal Notice

All rights to this pattern are owned by Ilka Matthiessen, erbsünde. The pattern may be used for personal purposes. For commercial use of the pattern, a maximum of 20 finished garments may be made and sold without a license. For the commercial production of more than 20 garments, a commercial license must be purchased in advance at www.erbsuende.com. Mass production of garments made from this pattern is prohibited. Distribution, resale, exchange, copying, printing, or (partial) publication of this pattern is expressly prohibited – violations of copyright will result in significant fines. When selling garments made from this pattern, please include the following statement: **Made with a pattern by erbsünde.**

Then take the front piece again and place it right side up in front of you.



Place the back piece right sides together on the front piece.
Pin the shoulder edges together.



Fold the facing up and away so that it is not pinned or sewn together.
Sew the seam.



Legal Notice

All rights to this pattern are owned by Ilka Matthiessen, erbsünde. The pattern may be used for personal purposes. For commercial use of the pattern, a maximum of 20 finished garments may be made and sold without a license. For the commercial production of more than 20 garments, a commercial license must be purchased in advance at www.erbsuende.com. Mass production of garments made from this pattern is prohibited. Distribution, resale, exchange, copying, printing, or (partial) publication of this pattern is expressly prohibited – violations of copyright will result in significant fines. When selling garments made from this pattern, please include the following statement: **Made with a pattern by erbsünde.**



Place the dress in front of you with the front piece now facing up, with the wrong side of the fabric visible.



Fold the facing piece right sides together over the front piece.
Pin the facing in place and sew the seam.
Repeat the same process on the other side.



This is what the neckline looks like now from the wrong side of the fabric.

Legal Notice

All rights to this pattern are owned by Ilka Matthiessen, erbsünde. The pattern may be used for personal purposes. For commercial use of the pattern, a maximum of 20 finished garments may be made and sold without a license. For the commercial production of more than 20 garments, a commercial license must be purchased in advance at www.erbsuende.com. Mass production of garments made from this pattern is prohibited. Distribution, resale, exchange, copying, printing, or (partial) publication of this pattern is expressly prohibited – violations of copyright will result in significant fines. When selling garments made from this pattern, please include the following statement: **Made with a pattern by erbsünde.**

This is what your neckline looks like from the right side of the fabric.



If you'd like, you can topstitch the back facing.
Pin the lower edge of the facing in place and then sew it close to the edge.



Fold the dress right sides together and align the side edges. Only pin the side seams together up to the mark indicated on the pattern. Leave the slit OPEN.
Make sure to only pin the lower pocket piece. The pocket opening MUST remain open.

Sew the seam and repeat the process on the other side.



Legal Notice

All rights to this pattern are owned by Ilka Matthiessen, erbsünde. The pattern may be used for personal purposes. For commercial use of the pattern, a maximum of 20 finished garments may be made and sold without a license. For the commercial production of more than 20 garments, a commercial license must be purchased in advance at www.erbsuende.com. Mass production of garments made from this pattern is prohibited. Distribution, resale, exchange, copying, printing, or (partial) publication of this pattern is expressly prohibited – violations of copyright will result in significant fines. When selling garments made from this pattern, please include the following statement: **Made with a pattern by erbsünde.**

Turn the dress right side out.
This is what your dress looks like now.



Then take the first sleeve cuff.



Fold the sleeve cuff right sides together
and pin the short edges together.



Legal Notice

All rights to this pattern are owned by Ilka Matthiessen, erbsünde. The pattern may be used for personal purposes. For commercial use of the pattern, a maximum of 20 finished garments may be made and sold without a license. For the commercial production of more than 20 garments, a commercial license must be purchased in advance at www.erbsuende.com. Mass production of garments made from this pattern is prohibited. Distribution, resale, exchange, copying, printing, or (partial) publication of this pattern is expressly prohibited – violations of copyright will result in significant fines. When selling garments made from this pattern, please include the following statement: **Made with a pattern by erbsünde.**

Sew the seam.



Fold the sleeve cuff wrong sides together, with the seam on the inside.



Now, take your dress again.



Legal Notice

All rights to this pattern are owned by Ilka Matthiessen, erbsünde. The pattern may be used for personal purposes. For commercial use of the pattern, a maximum of 20 finished garments may be made and sold without a license. For the commercial production of more than 20 garments, a commercial license must be purchased in advance at www.erbsuende.com. Mass production of garments made from this pattern is prohibited. Distribution, resale, exchange, copying, printing, or (partial) publication of this pattern is expressly prohibited – violations of copyright will result in significant fines. When selling garments made from this pattern, please include the following statement: **Made with a pattern by erbsünde.**



Pin the unfolded sleeve cuff right side out around the armhole.
Align the seam of the sleeve cuff with the underarm seam.



Make sure to pin only one layer of the sleeve cuff fabric.



Sew the seam and then flip the sleeve cuff so that the right side of the fabric is facing outward.

Legal Notice

All rights to this pattern are owned by Ilka Matthiessen, erbsünde. The pattern may be used for personal purposes. For commercial use of the pattern, a maximum of 20 finished garments may be made and sold without a license. For the commercial production of more than 20 garments, a commercial license must be purchased in advance at www.erbsuende.com. Mass production of garments made from this pattern is prohibited. Distribution, resale, exchange, copying, printing, or (partial) publication of this pattern is expressly prohibited – violations of copyright will result in significant fines. When selling garments made from this pattern, please include the following statement: **Made with a pattern by erbsünde.**



Then press the seam allowance on the open edge of the sleeve cuff to the inside.



Now fold the sleeve cuff along the center crease to the inside and pin it around the edge in the seam allowance.



Make sure to always pin the inner edge of the cuff while folding it.

Legal Notice

All rights to this pattern are owned by Ilka Matthiessen, erbsünde. The pattern may be used for personal purposes. For commercial use of the pattern, a maximum of 20 finished garments may be made and sold without a license. For the commercial production of more than 20 garments, a commercial license must be purchased in advance at www.erbsuende.com. Mass production of garments made from this pattern is prohibited. Distribution, resale, exchange, copying, printing, or (partial) publication of this pattern is expressly prohibited – violations of copyright will result in significant fines. When selling garments made from this pattern, please include the following statement: **Made with a pattern by erbsünde.**



Sew around the cuff to secure it in place within the seam allowance.



This is how the attached sleeve cuff looks from the inside.



Then fold the sleeve cuff to the outside and press the edge with an iron.

Legal Notice

All rights to this pattern are owned by Ilka Matthiessen, erbsünde. The pattern may be used for personal purposes. For commercial use of the pattern, a maximum of 20 finished garments may be made and sold without a license. For the commercial production of more than 20 garments, a commercial license must be purchased in advance at www.erbsuende.com. Mass production of garments made from this pattern is prohibited. Distribution, resale, exchange, copying, printing, or (partial) publication of this pattern is expressly prohibited – violations of copyright will result in significant fines. When selling garments made from this pattern, please include the following statement: **Made with a pattern by erbsünde.**



Now it's time to hem the dress.



To hem the dress, first press open the seam allowances of the side seams. Then, fold the seam allowances at the slit edges to the inside and press them.



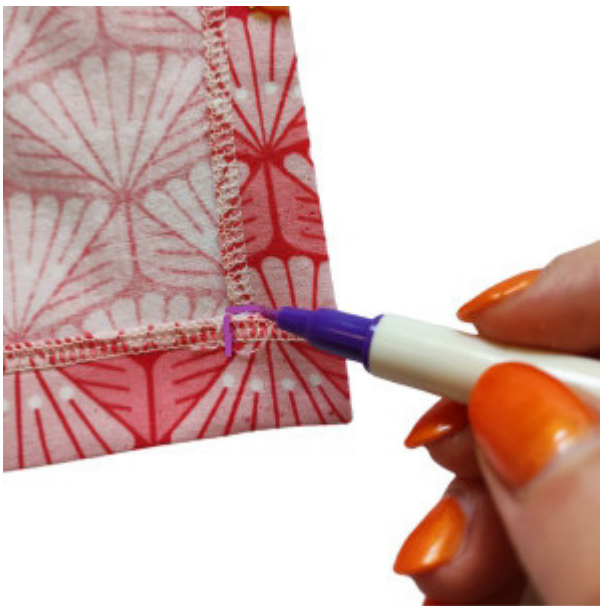
Pin the edges of the slit securely.

Legal Notice

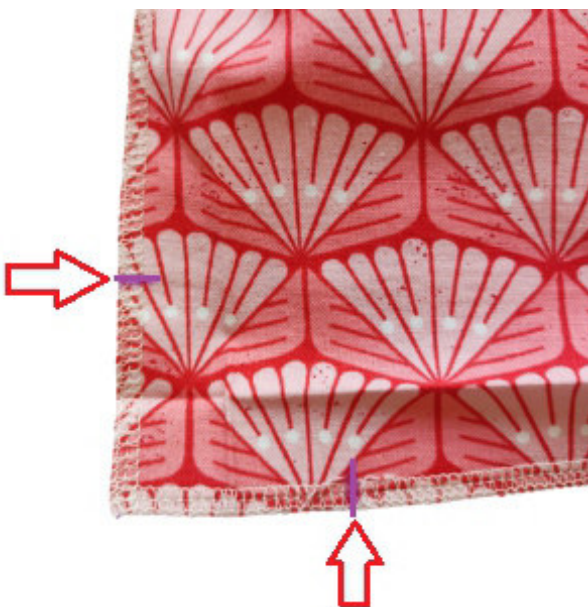
All rights to this pattern are owned by Ilka Matthiessen, erbsünde. The pattern may be used for personal purposes. For commercial use of the pattern, a maximum of 20 finished garments may be made and sold without a license. For the commercial production of more than 20 garments, a commercial license must be purchased in advance at www.erbsuende.com. Mass production of garments made from this pattern is prohibited. Distribution, resale, exchange, copying, printing, or (partial) publication of this pattern is expressly prohibited – violations of copyright will result in significant fines. When selling garments made from this pattern, please include the following statement: **Made with a pattern by erbsünde.**



Press the hem allowance of the bottom edge of the dress to the inside as well.



Mark the points where the inner edges of the hem meet at the corner.



Fold the hem back.

Legal Notice

All rights to this pattern are owned by Ilka Matthiessen, erbsünde. The pattern may be used for personal purposes. For commercial use of the pattern, a maximum of 20 finished garments may be made and sold without a license. For the commercial production of more than 20 garments, a commercial license must be purchased in advance at www.erbsuende.com. Mass production of garments made from this pattern is prohibited. Distribution, resale, exchange, copying, printing, or (partial) publication of this pattern is expressly prohibited – violations of copyright will result in significant fines. When selling garments made from this pattern, please include the following statement: **Made with a pattern by erbsünde.**



Place the markings right sides together.



Hold the corner firmly so that the markings stay aligned together.



Fold the corner over so that the point aligns precisely with the markings.

Legal Notice

All rights to this pattern are owned by Ilka Matthiessen, erbsünde. The pattern may be used for personal purposes. For commercial use of the pattern, a maximum of 20 finished garments may be made and sold without a license. For the commercial production of more than 20 garments, a commercial license must be purchased in advance at www.erbsuende.com. Mass production of garments made from this pattern is prohibited. Distribution, resale, exchange, copying, printing, or (partial) publication of this pattern is expressly prohibited – violations of copyright will result in significant fines. When selling garments made from this pattern, please include the following statement: **Made with a pattern by erbsünde.**



Draw a line along the diagonal folded edge of the corner.



Now sew along the corner edge using a straight stitch on the sewing machine.



Then trim off the excess corner carefully.

Legal Notice

All rights to this pattern are owned by Ilka Matthiessen, erbsünde. The pattern may be used for personal purposes. For commercial use of the pattern, a maximum of 20 finished garments may be made and sold without a license. For the commercial production of more than 20 garments, a commercial license must be purchased in advance at www.erbsuende.com. Mass production of garments made from this pattern is prohibited. Distribution, resale, exchange, copying, printing, or (partial) publication of this pattern is expressly prohibited – violations of copyright will result in significant fines. When selling garments made from this pattern, please include the following statement: **Made with a pattern by erbsünde.**



Then turn the corner right side out.



This is how the corner looks from the right side of the fabric.



This is how the corner looks from the wrong side of the fabric. Repeat this process with the other corners of the hem.

Legal Notice

All rights to this pattern are owned by Ilka Matthiessen, erbsünde. The pattern may be used for personal purposes. For commercial use of the pattern, a maximum of 20 finished garments may be made and sold without a license. For the commercial production of more than 20 garments, a commercial license must be purchased in advance at www.erbsuende.com. Mass production of garments made from this pattern is prohibited. Distribution, resale, exchange, copying, printing, or (partial) publication of this pattern is expressly prohibited – violations of copyright will result in significant fines. When selling garments made from this pattern, please include the following statement: **Made with a pattern by erbsünde.**



Then pin the entire hem in place and stitch it down.



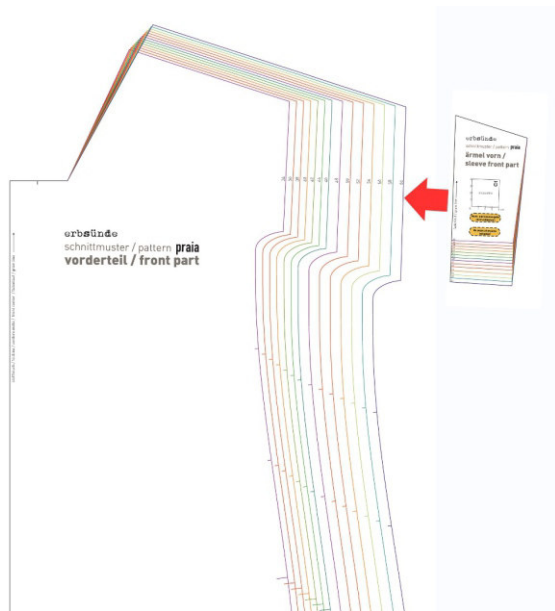
The hem at the slit is angled. At the upper end, it is as wide as the seam allowance of the side edges, and it widens downwards to match the hem allowance at the lower edge.

Your dress is finished!



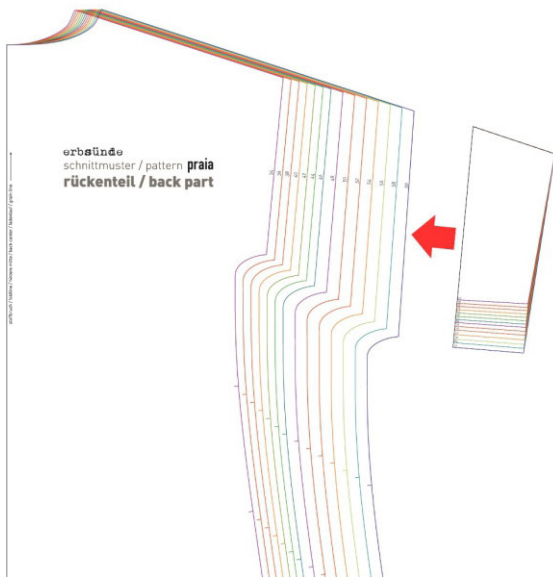
Legal Notice

All rights to this pattern are owned by Ilka Matthiessen, erbsünde. The pattern may be used for personal purposes. For commercial use of the pattern, a maximum of 20 finished garments may be made and sold without a license. For the commercial production of more than 20 garments, a commercial license must be purchased in advance at www.erbsuende.com. Mass production of garments made from this pattern is prohibited. Distribution, resale, exchange, copying, printing, or (partial) publication of this pattern is expressly prohibited – violations of copyright will result in significant fines. When selling garments made from this pattern, please include the following statement: **Made with a pattern by erbsünde.**



Cutting Praia as a blouse with longer sleeves

Start by attaching the front sleeve pattern piece to the sleeve edge of the front piece.



Then, glue the back sleeve pattern piece to the sleeve edge of the back piece.



The length of the blouse can be chosen freely. Shorten the front and back pattern pieces accordingly. How to proceed with that is described on page 33.

Fold the fabric with wrong sides together and place the front piece with the "center front/fold" marking along the edge. Cut it once on the fabric fold. Finish the edges of the pattern piece with a serger or another suitable method.

Legal Notice

All rights to this pattern are owned by Ilka Matthiessen, erbsünde. The pattern may be used for personal purposes. For commercial use of the pattern, a maximum of 20 finished garments may be made and sold without a license. For the commercial production of more than 20 garments, a commercial license must be purchased in advance at www.erbsuende.com. Mass production of garments made from this pattern is prohibited. Distribution, resale, exchange, copying, printing, or (partial) publication of this pattern is expressly prohibited – violations of copyright will result in significant fines. When selling garments made from this pattern, please include the following statement: **Made with a pattern by erbsünde.**



Fold the fabric with wrong sides together and align the pattern piece for the back with the "center back/fold" marking along the edge. Cut it once on the fabric fold. Finish the edges of the pattern piece with a serger or another suitable method.



Cut the pattern piece "front neckline" once in double layers of fabric. Finish the edges of the pattern pieces with a serger or another suitable method.



Cut the back facing piece once in a single layer of fabric. Finish the edges of the pattern piece with a serger or another suitable method.

Legal Notice

All rights to this pattern are owned by Ilka Matthiessen, erbsünde. The pattern may be used for personal purposes. For commercial use of the pattern, a maximum of 20 finished garments may be made and sold without a license. For the commercial production of more than 20 garments, a commercial license must be purchased in advance at www.erbsuende.com. Mass production of garments made from this pattern is prohibited. Distribution, resale, exchange, copying, printing, or (partial) publication of this pattern is expressly prohibited – violations of copyright will result in significant fines. When selling garments made from this pattern, please include the following statement: **Made with a pattern by erbsünde.**

Sew the Praia blouse with longer sleeves

Follow the assembly instructions starting from page 9.

Since pockets are not required here, you can skip the initial pages.



Here is how the blouse looks now.



The sleeves and the hem of the blouse are simply hemmed.

**Legal Notice**

All rights to this pattern are owned by Ilka Matthiessen, erbsünde. The pattern may be used for personal purposes. For commercial use of the pattern, a maximum of 20 finished garments may be made and sold without a license. For the commercial production of more than 20 garments, a commercial license must be purchased in advance at www.erbsuende.com. Mass production of garments made from this pattern is prohibited. Distribution, resale, exchange, copying, printing, or (partial) publication of this pattern is expressly prohibited – violations of copyright will result in significant fines. When selling garments made from this pattern, please include the following statement: **Made with a pattern by erbsünde.**

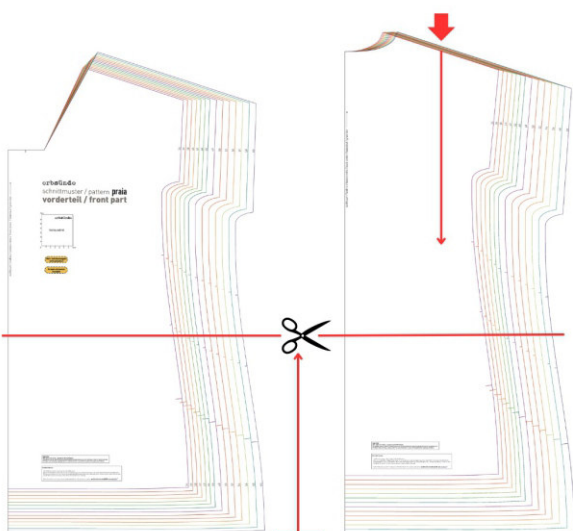


To do this, fold the seam allowance of the sleeve hem to the inside and stitch it down.

Repeat the same process for the other sleeve and the hem of the blouse.



Your blouse with longer sleeves is complete!



To shorten for a top or tunic - measure the desired length on yourself. Start from the top of the shoulder, over the bust, down to the desired length.

Then, from the center of the shoulder seam of the back part, measure the desired length and shorten the pattern accordingly.

For the front part, shorten by the same amount you cut from the back part, starting from the hem edge.

Legal Notice

All rights to this pattern are owned by Ilka Matthiessen, erbsünde. The pattern may be used for personal purposes. For commercial use of the pattern, a maximum of 20 finished garments may be made and sold without a license. For the commercial production of more than 20 garments, a commercial license must be purchased in advance at www.erbsuende.com. Mass production of garments made from this pattern is prohibited. Distribution, resale, exchange, copying, printing, or (partial) publication of this pattern is expressly prohibited – violations of copyright will result in significant fines. When selling garments made from this pattern, please include the following statement: **Made with a pattern by erbsünde.**