

# sumare

XXS - 3XL

erbsünde



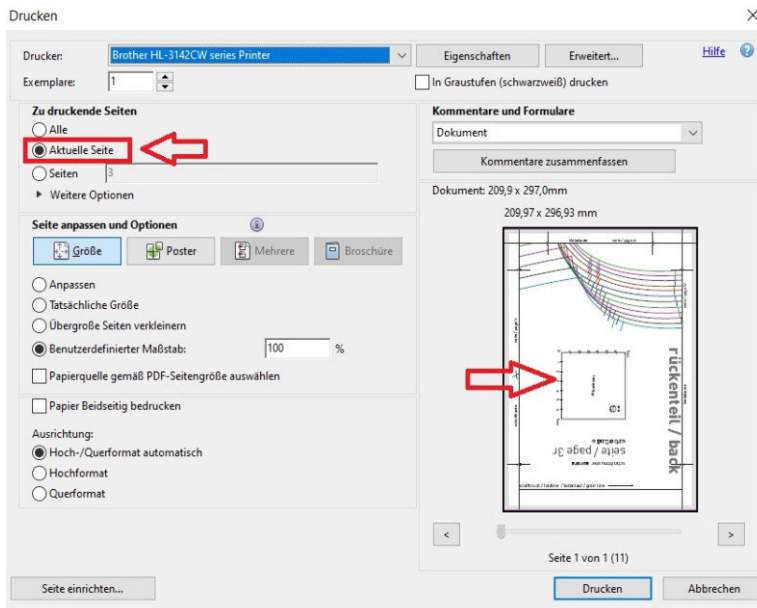
schnittmuster



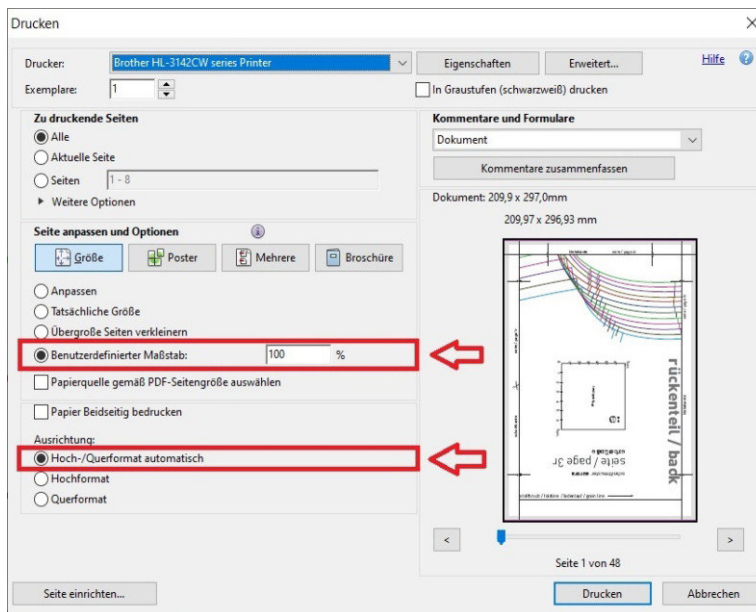
sewing pattern



# Print the sewing pattern



- First, save the file on your computer/notebook/tablet.
- Next, open the file using Acrobat Reader.
- Locate a page with a test square.
- Go to 'File' - 'Print' Select 'Current Page'

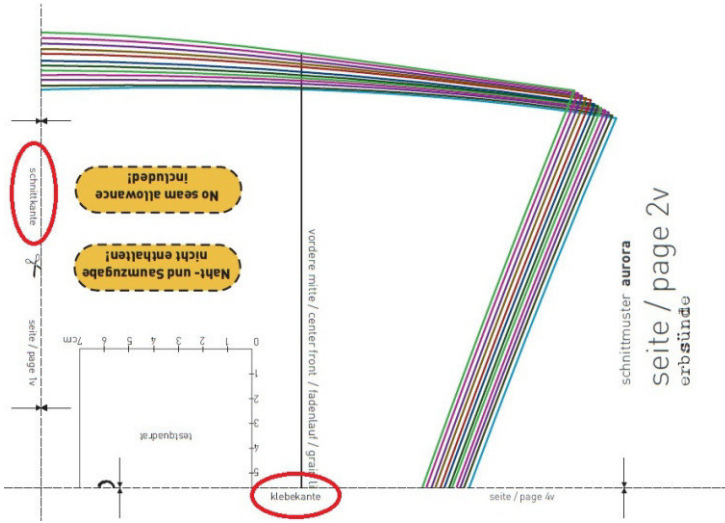


- Then choose the settings:  
"Custom Scale" 100%  
and orientation  
"Automatic Portrait/  
Landscape"
- Print the page and measure the test square afterwards. It should match exactly in millimeters.

Subsequently, print all pages with the exact settings mentioned above.



# Assemble the sewing pattern



On the sides, you'll find "Schnittkanten/cutting edge" and "Klebekanten/glue edge" markings.

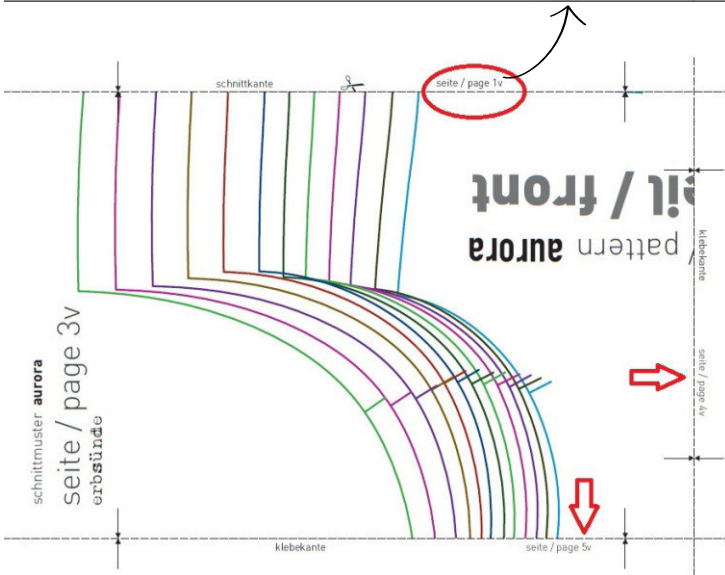
Trim along the dashed line for "Schnittkante/cutting edge" and affix it to the designated "Klebekante/glue edge" area as indicated.



Each page is numbered; here's page 1v.

On the edges of the pages, there are markings indicating whether a page needs to be affixed and, if so, which one.

Here, attach page 2v on the right and page 3v at the bottom.



Here is page 3v.

Trim the upper edge ("Schnittkante/cutting edge"), and as indicated on the margins, affix it to the bottom of page 1v.

Following this straightforward system, the entire sewing pattern is assembled.

# Sumare

## Table of contents

Material Sheet: Fabric Recommendation, Required Materials, Important Notes	1
Cut Sumare	2 - 3
Sew Sumare	4 - 16
Pattern Adjustment - Length Modification	16



## About Sumare

Sumare is an incredibly comfortable sweatshirt coat with a rounded hem. To give it a nice finish and make it extra cozy, the hood and front sections are sewn with double layers. Optionally, the lining can also be made from a stretchy contrasting fabric, allowing you to combine two fabrics. The pattern is complemented by seam pockets. There's no closure provided for this casual coat, but of course, it can be added as desired, with buttons, toggle fasteners, or snap buttons at the preferred location.

## Body Measurement Chart

The following table is provided to help you choose the right size. The bust measurement is crucial for selecting the correct size. If your hip measurement is two sizes or more larger than your bust, please adjust the pattern to the next larger size starting from the waist. If the hip measurement is only one size larger, you can sew the size based on the bust measurement. Instructions on how to make adjustments can be found on [erbsuende.com](http://erbsuende.com) under "DIY" - "Pattern Adjustments."

Size EU	XXS	XS	S	M	L	XL	XXL	3XL
Breast circumference	up to 85cm	up to 90cm	up to 95cm	up to 100cm	up to 110cm	up to 120cm	up to 130cm	up to 140cm
Hip circumference	up to 85cm	up to 90cm	up to 95cm	up to 100cm	up to 110cm	up to 120cm	up to 130cm	up to 140cm

## Fabric Recommendation

All stretchable fabrics such as sweatshirt fleece, knit, fleece, knit-jacquard, French terry, etc.

## Fabric Amount for a Fabric Width of 1.45m

The fabric amount is based on the coat length according to the pattern. This is approximately 115 cm and is optimal for a height of 1.70m and above. If you are shorter or desire a shorter coat, you can shorten it as described in the instructions.

Size EU	XXS	XS	S	M	L	XL	XXL	3XL
Total fabric length	3m	3m	3,5m	3,5m	3,5m	4m	4m	4m
Outer fabric length	2,5m	2,5m	2,5m	2,8m	2,8m	3m	3m	3m
Lining fabric length	1,5m	1,5m	1,5m	1,5m	1,5m	1,8m	1,8m	1,8m

## Seam and Hem Allowances

The pattern does not include seam and hem allowances; these need to be added individually when cutting.

## Required Material

- Fabric (see above)
- Tape for assembling the pattern.
- Scissors, measuring tape, pins or clips.
- Sewing machine, overlock/coverlock (if available), iron

## Important Notes

- Before cutting, please read through the entire instructions
- For correct opening and printing of the pattern, please use the latest version of Adobe Acrobat Acrobat Reader.
- When adjusting the printing settings, make sure to choose either 100% or 'no scaling'

## Cut sumare



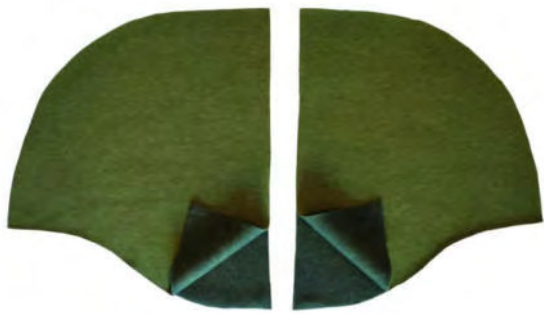
Fold the fabric with the wrong sides together. Place the pattern piece for the front piece on top. Cut out the pattern piece 2x in double fabric layers. You'll get 2 mirror-image pattern pieces each, once for the outer front and once for the inner lining. If you want to use a contrasting fabric for the lining, cut the front piece 1x in double fabric layers from both the lining and outer fabric.



Fold the fabric with the wrong sides together and place the pattern piece for the back piece with the 'Back Center / Fold' marking on the edge. Cut out the pattern piece 1x on the fold.



Cut the sleeves 1x in double fabric layers.



Cut the hood 2x in double fabric layers. You'll get 2 mirror-image pattern pieces each, once for the outer hood and once for the inner hood. If you want to use a contrasting fabric for the inner hood, cut the hood 1x in double fabric layers from both the lining and outer fabric.



Cut the back facing 1x in single fabric layer. If you're using a contrasting fabric for the lining, we recommend using it for the back facing as well.



Cut the pockets 2x in double fabric layers. You'll get 2 mirror-image pattern pieces each.



## Sew Sumare

First, attach the pockets. Take the first outer front piece and the first pocket bag.

Transfer the pocket's position from the pattern onto the pattern piece.



Place the pocket right sides together on the front piece at the markings. Pin the side edges together and sew the seam.

Repeat the process with the pocket bags on the other front and back pieces.



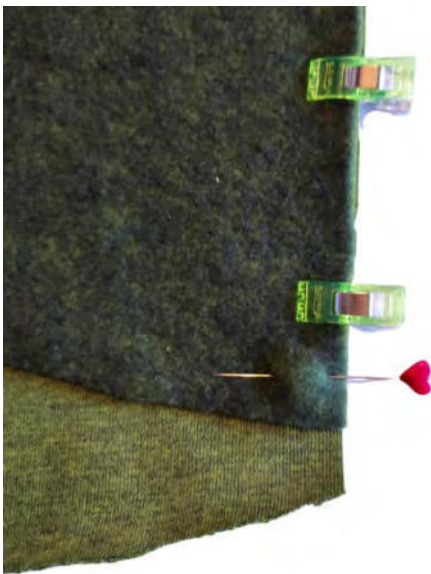
Now, place the back piece with the right side up in front of you.

Place the first outer front piece right sides together on top. Pin the shoulder edges together and sew the seam.





Now, pin the side edges of the front and back pieces together. Also, pin the outer edges of the pocket bags together.



The fabric from the back piece will extend beyond, as the back piece is longer than the front piece due to seam allowance. The back piece will be hemmed later, while the front piece will be lined. Therefore, leave the seam allowance of the front piece free, do not cut it away!

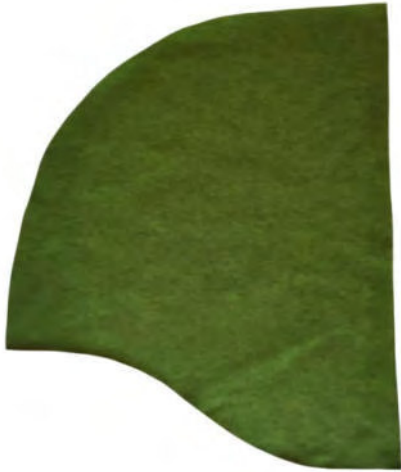
Pin the two pattern pieces together only up to the seam allowance of the front piece and sew the seam.



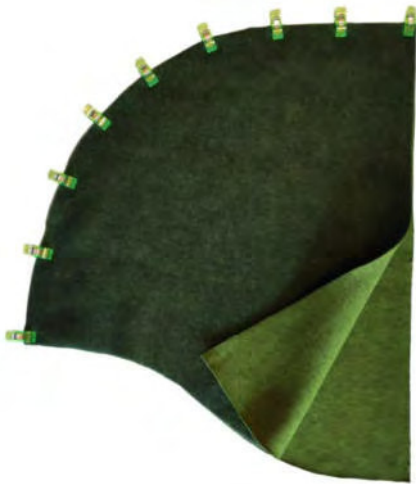
Repeat the process with the other outer front piece.

Then, turn your coat right side out. Your coat will now look like this, with the pockets on the inside.

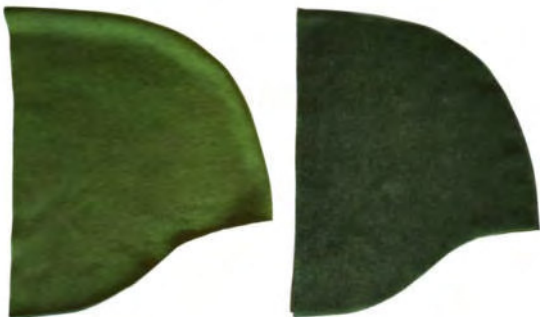
Now, take the first hood piece and place it with the right side up in front of you.



Place the second hood piece right sides together. Pin the crown edges together and sew the seam.



Repeat the process with the other hood.



Turn one hood right side out.  
Place both hoods right sides together.



Pin the edges of the face opening of the two hoods right sides together and sew the seam.



Turn the hood right side out.  
Your hood will now look like this.



Take the back facing and the first inner front piece.



Place the back facing right sides together on the inner front piece.  
Pin the shoulder edges together and sew the seam.



Repeat the process with the other inner front piece.  
Your lining piece will now look like this.



Now, take the outer coat and the hood.  
Mark the back center on the neckline  
and the lower edge of the hood.



Pin the hood right sides together onto  
the neckline.



The hood ends at the edge of the  
seam allowance.  
The seam allowance at the edge of  
the front pieces remains free - the  
seam allowance is needed to  
attach the inner lining.  
Sew the hood onto the jacket.



Now, take the facing and pin it right sides together onto the neckline.  
The hood is sandwiched between the coat and the facing.

Sew the seam.



Now, pin the edges of the two front pieces (inner and outer fabric) right sides together.



Here you can see it again: The back piece is longer because it is not lined but will be hemmed later.  
Sew the seam and repeat the process on the other side.

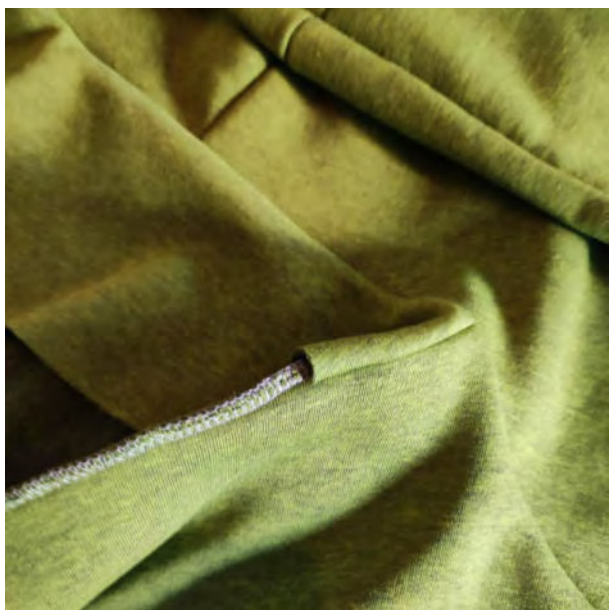




Turn the coat so that the facing and lining are now inside the coat with wrong sides together.  
The hood blends seamlessly into the front piece.



Now, pin the shoulder edge of the lining to the shoulder seam (seam allowance) of the front and back pieces.



Sew the seam and repeat the process on the other side.



Now, pin the side edge of the lining to the side seam (seam allowance).



Make sure that the pocket bag is sandwiched between the front piece and the lining.

Sew the seam and repeat the process on the other side.



This is how your coat looks now.



Take the first sleeve.



Fold the sleeve right sides together and pin the underarm edges together.



Sew the seam.

Turn the sleeve right side out.



Repeat the process with the second sleeve.



Turn the coat inside out and insert the sleeve right sides together into the armhole.



Insert the sleeve into the armhole, aligning the sleeve seam with the side seam of the coat. Pin the sleeve in place and sew the seam.

Repeat the process with the other sleeve.



Turn the coat right side out.

Your sewn-in sleeve should now look like this.



Fold the seam allowance at the sleeve hem to the inside and stitch it in place. Repeat the same process with the other sleeve.



Now fold the excess seam allowance at the back of the coat to the inside.

Stitch the hem close to the edge.



Pin the lower edge of the back facing and stitch it down as well.

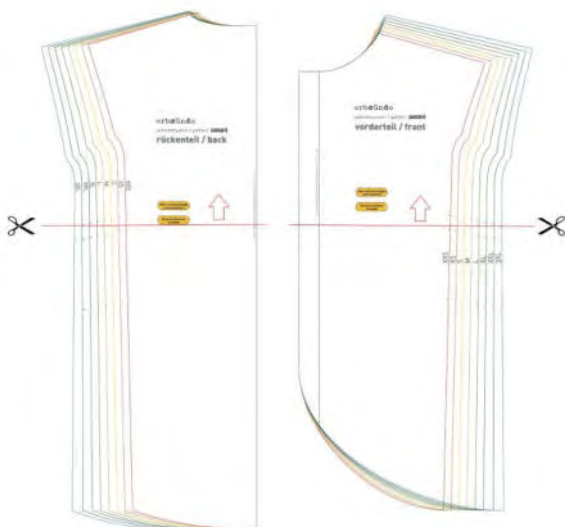


This is what your facing looks like now.



While no closure is included in the pattern, you can certainly add one according to your preference – using buttons, toggles, or snaps at the desired location.

Congratulations! Your coat is complete. Well done on your sewing project! Enjoy wearing your newly made coat!



### Pattern Adjustment

If you wish to shorten your coat, cut the front and back pattern pieces at the waistline mark, then overlap them by the desired amount. This way, the curved hemline will be maintained.

For lengthening, simply spread the pattern pieces apart by the desired amount.