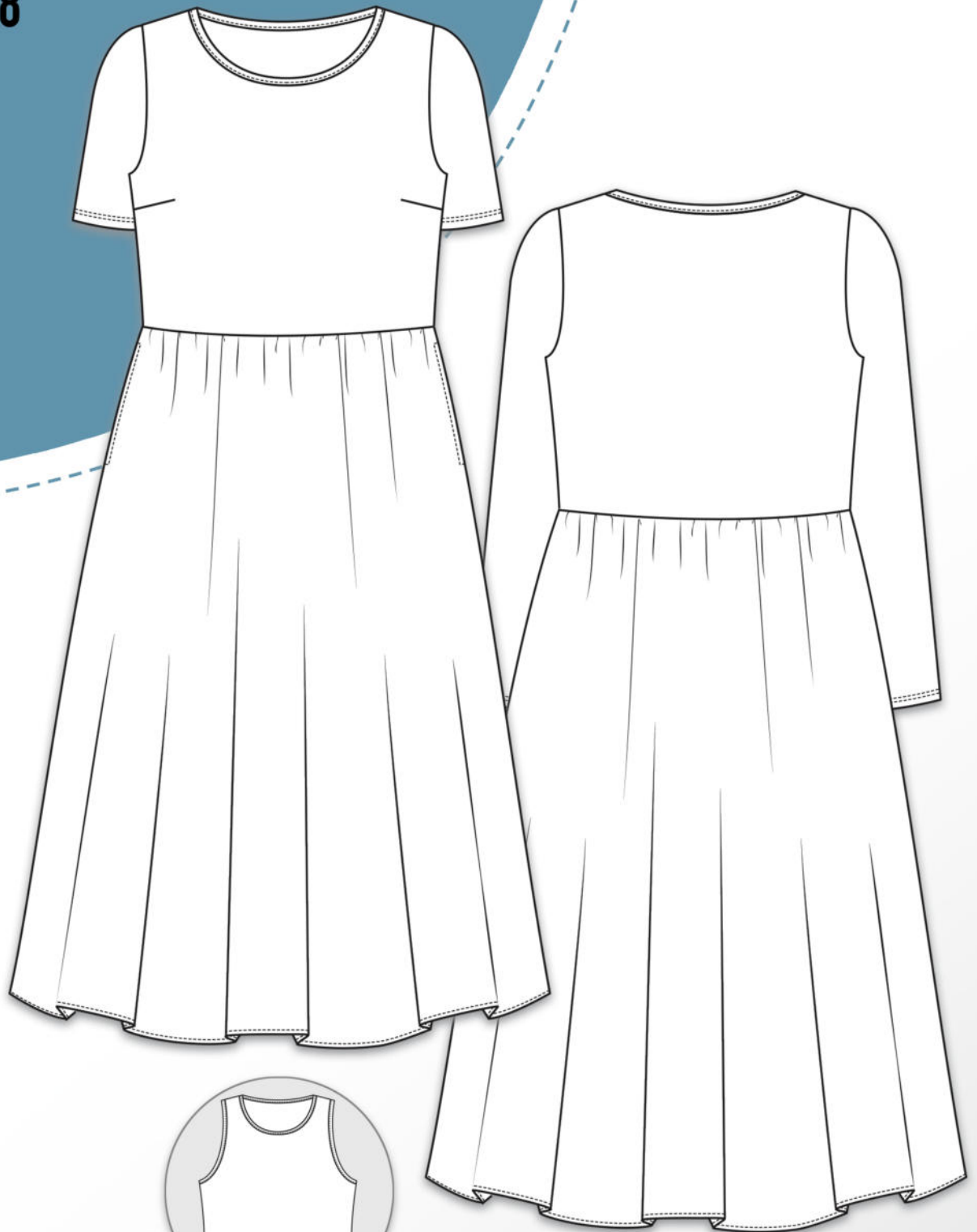


# suzana

32 - 58

erbsünde



schnittmuster



sewing pattern

## Foreword

I'm delighted that you've chosen an erbsünde sewing pattern.

Since 2013, I've poured my heart and soul into creating patterns for women, men, and children.

No body is shaped the same, and often ready-to-wear clothing doesn't fit perfectly. We want to move away from generic outfits and towards personalized tops, dresses, jackets, coats, and pants that can be made from your preferred fabrics - even in larger sizes and longer lengths. Each pattern can be customized to your liking and offers great versatility with numerous variations.

Our women's sewing patterns take into account the nuances of the female figure, creating visually harmonious silhouettes. Whether you have a large or small bust, generous hips, or a more slender frame, my goal is to enhance women's body confidence. I want to show them that with the right clothing, they can feel beautiful and comfortable in any size, empowering them to embrace their uniqueness and radiate confidence.

With these sewing patterns, you will expand your wardrobe with favorite pieces that make you feel comfortable and accompany you beautifully through your day.

The detailed, illustrated instructions will guide you through the entire process, from cutting the fabric to completing the garment step-by-step. Some elements may be new to you, but with the help of the instructions, you can learn and further perfect your sewing hobby.

On my website [www.erbsuende.com](http://www.erbsuende.com) (under DIY), you will find numerous tutorials and guides for pattern hacks and modifications. If you have any questions, feel free to email me at [info@erbsuende.com](mailto:info@erbsuende.com).

I wish you much joy with your new sewing pattern.

Yours sincerely,  
Ilka

## Imprint

© erbsünde Ilka Matthiessen

Year of Publication: 2023

Author/Creator/Copyright Holder: Ilka Matthiessen

Editing/Proofreading: Ilka Matthiessen

This work, including its parts, is protected by copyright and may not be redistributed. Any use without the author's consent is strictly prohibited and expressly forbidden. This applies especially to (partially) electronic or other reproduction, translation, dissemination, distribution, and public accessibility.

**All rights are reserved by**  
Ilka Matthiessen erbsünde  
Karlsbader Str. 8  
80937 München  
[info@erbsuende.com](mailto:info@erbsuende.com)  
[www.erbsuende.com](http://www.erbsuende.com)



# Suzana

## Table of contents

Material Sheet: Amount of fabric, required materials, important notes	1
Cut Suzana with sleeveless top	2 - 3
Sew Suzana with sleeveless top	3 - 14
Cut top with sleeves	14 - 15
Sew top with sleeves	15 - 18
Expand hip circumference	19
Shorten the top	19
Adjust bust darts	19 - 21



## About Suzana

Suzana is a breezy dress with a fitted bodice and a loosely flowing skirt. The bodice is made from stretchable fabrics, while the skirt is made from woven materials. The pattern includes pockets. Since the skirt is gathered to the bodice, different sizes can be combined if necessary. The pattern offers two bodice variations: a sleeveless top and a bodice with darts and various sleeve lengths.

## Body Measurement Chart

The following table is for size selection. The bust measurement is crucial for choosing the correct size for the bodice. If your hip measurement is larger than your bust, you can simply select the skirt size based on your hip measurement.

Size EU	32	34	36	38	40	42	44	46	48	50	52	54	56	58
Chest circumference	up to 85cm	up to 90cm	up to 94cm	up to 98cm	up to 102cm	up to 106cm	up to 111cm	up to 116cm	up to 121cm	up to 126cm	up to 130cm	up to 135cm	up to 140cm	up to 145cm
Waist circumference	up to 75cm	up to 80cm	up to 86cm	up to 90cm	up to 94cm	up to 98cm	up to 102cm	up to 106cm	up to 110cm	up to 114cm	up to 119cm	up to 123cm	up to 126cm	up to 130cm
Hips circumference	up to 85cm	up to 90cm	up to 93cm	up to 97cm	up to 100cm	up to 105cm	up to 110cm	up to 115cm	up to 120cm	up to 125cm	up to 130cm	up to 135cm	up to 140cm	up to 145cm

## Fabric Recommendation

For the bodice, stretchable fabrics such as Jersey, French Terry, Punta di Roma, etc. are suitable. Extremely stretchy fabrics like Viscose Jersey are not recommended, as the bodice might be pulled down by the heavier skirt.

For the skirt, light cotton woven fabric, Poplin, Muslin, Viscose, Voile, Linen, etc. are suitable.

## Fabric amount for a fabric width of 1.45m

Size EU	32	34	36	38	40	42	44	46	48	50	52	54	56	58
Fabric length Top	0.7m	0.7m	0.7m	0.7m	0.7m	0.7m	1m	1m	1m	1m	1m	1m	1m	1m
Fabric length skirt	2m	2m	2m	2m	2.2m	2.2m	2.2m	2.2m	2.5m	2.5m	2.5m	2.5m	2.5m	2.5m

## Seam and Hem Allowances

The pattern does not include seam and hem allowances; these must be added individually when cutting out.

## Required Material

- Fabric (see above)
- Possibly a 5mm wide elastic band for the waist seam
- Tape for assembling the pattern
- Scissors, measuring tape, pins or clips
- Sewing machine, serger/coverstitch machine (if available), iron

## Important Notes

- Please read the entire instructions before cutting!
- For the correct opening and printing of the pattern, please use the latest Adobe Acrobat Reader.
- When setting up the print, ensure it's set to either 100% or 'no page scaling'.

**Cut Suzana with sleeveless top**

Fold the fabric with the wrong sides together. Place the pattern piece for the "Front Piece Sleeveless Top" with the marking "Front Center / Fold" on the fold line. Cut out the pattern piece once on the fold. Repeat the same process with the "Back Piece Sleeveless Top".

---

The binding strip for the neckline will be cut once on a single layer of fabric. Cut the binding strip for the armholes once on a double layer of fabric.



---

Cut the skirt piece twice on the fabric fold. Finish the edges of both pattern pieces





Fold the pocket bag with the wrong side facing inwards and cut the pocket bag twice on a double layer of fabric. You will have 4 pattern pieces in total. Finish the edges of all pattern pieces

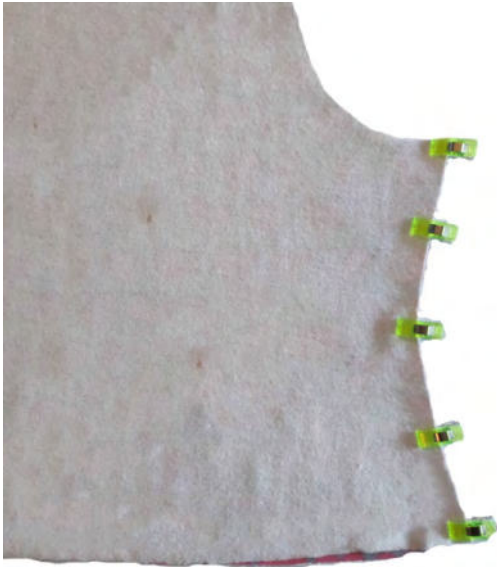


### Sew Suzana with sleeveless top

First, the top part will be sewn. Place the back piece with the right side of the fabric facing up in front of you.



Place the front piece right side down on top of it.  
Pin the shoulder edges together and sew the seams.



Now, pin the side edges together and sew the seam.  
Repeat the process with the other side.



Turn the top right side out. This is how it looks now.



Now, take the binding strip for the neckline.  
Fold it right sides together and pin the short edges together. Sew the seam.

Now, take the top and the binding strip in hand.



Pin the binding strip inside out into the neckline.

The seam of the binding strip aligns with the back center of the neckline.



The right side of the binding strip is facing the wrong side of the neckline fabric.





Pin the binding strip all around the inside of the neckline.



Sew the seam.  
This is how your flipped-up binding strip looks now.



Now fold the binding strip in half, downwards. The seam is located within the folded binding strip.





Then fold the binding strip in half again, downwards.



Pin the double-folded binding strip securely all around.



Repeat the process with the binding strips for the armholes.



Stitch the binding strips with a narrow edge stitch. This is how your top looks now.



Now, take the first skirt piece in hand.



Now, take the first pocket pouch in hand.

Transfer the markings for the pocket opening from the pattern onto the skirt piece and the pocket pouch.



Place the pocket pouch right side down on the skirt piece. The markings should align with each other.



Pin the edge of the pocket pouch between the markings to the edge of the skirt.  
Sew the seam from one marking to the other.



Repeat the process with the second pocket pouch on the front and the two pocket pouches on the back skirt piece.



Now, place the front and back skirt pieces right sides together. First, pin only the outer edges (curves) of the pocket pouches together. Sew the seam and repeat the process with the other pocket pouch.



Then, pin the edges of the front and back skirt pieces above the pocket pouch together. Sew the seam up to the point where the seam attaching the pocket pouch to the skirt begins. Sew this seam.



Subsequently, pin the side edges of the front and back skirt pieces together below the pocket pouch.



To do this, fold the bottom end of the pocket pouch upwards. This ensures that you can pin the skirt pieces together up to the point where the pocket pouch seam ends.  
Sew the seam.

Repeat the process with the other side seam of the skirt.



Fold the pocket pouch so that it's wrong side out and lies on top of the front skirt piece.  
Secure the corners above and below the pocket opening with a clip.



Stitch the secured corners of the pocket pouch onto the seam allowance. Repeat the process with the other side.

Your skirt piece is ready - now you need to gather the top edge of the skirt to match the width of the bottom edge of the top piece.



To do this, sew a long straight stitch (maximum stitch length) along the top edge of the skirt. Since there's a lot of fabric, we recommend doing separate stitches for the front and back parts of the skirt.

**ATTENTION:** These stitches must NOT be locked!



Now, pull on the loose ends of the gathering stitches until the top edge of the skirt matches the width of the bottom edge of the top piece. Tie knots in the gathering stitches afterward to secure them in place and prevent any shifting.



Now, pin the top piece right sides together with the skirt. Make sure that the front part of the skirt is aligned right sides together with the front part of the top.



Pin the bottom edge of the top piece right sides together to the gathered top edge of the skirt. Ensure that the side seams align perfectly. Sew the seam.



This is how your dress looks now.

If you want the dress to fit tighter at the waist, you can sew a narrow elastic band (0.5cm wide) stretched along the seam allowance of the seam connecting the skirt and the top.





Finally, the dress is hemmed. To do this, fold the hem allowance inward and stitch it securely all around.

---

Your sleeveless dress is complete!



---

### Cut the Top with Sleeves

Select the pattern pieces for the top with sleeves. Cut the front piece and the back piece once each on the fold of the fabric.



Cut the sleeve in the desired length (short, 3/4, or long) once in double-layered fabric.



---

### Sew the Top with Sleeves

Transfer the bust darts from the pattern onto the left side of the front piece.



---

Pin the bust dart markings together.





Sew the bust darts using a straight stitch on the sewing machine. Then, press the darts downwards with an iron.



Place the front piece with the bust darts right side up in front of you.



Place the back piece right side down on top of it. Pin the shoulder edges together and sew the seams.



Lay the top unfolded with the right side of the fabric facing up. Take the first sleeve in hand.



Pin the sleeve right side down into the armhole.  
Sew the seam.  
Repeat the process with the other sleeve.



Fold the top right sides together. Pin the underarm and side edges together and sew the seam in one continuous line.  
Repeat the process on the other side.



Now, fold the sleeve hem allowance inward and pin it in place. Hem the sleeve, and repeat the process with the other sleeve.



This is how your top with sleeves looks now. The neckline will be finished as described above. Now, sew the skirt together as mentioned earlier and attach both parts following the instructions provided above.



Your dress with long sleeves is complete! Well done on your sewing project. I hope you enjoy wearing your beautiful handmade dress.

## Pattern Adjustments

### Expanding Hip Circumference

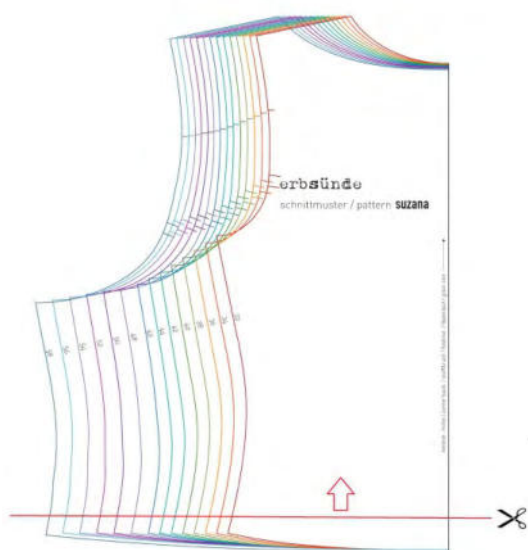
If you need a larger size at the hips than at the bust and waist, simply cut the top and the skirt in the appropriate size. Because of the gathering, it's not an issue to sew a larger skirt piece to a smaller top piece.

### Shortening the Top

You can shorten both the sleeveless top and the top with sleeves if you want to raise the placement of the skirt.

To do this, cut the pattern piece for the front and back a few centimeters above the lower edge. Then, slide the lower part with the curve upwards by the desired amount. Reconnect the side lines.

You can also shorten the finished dress afterward by detaching the skirt piece again and shortening the top accordingly..



### Adjusting Bust Darts

In some cases, the bust dart needs to be shifted slightly. To check if this applies to you, pin the front piece you've cut in your size onto your top using a few pins.

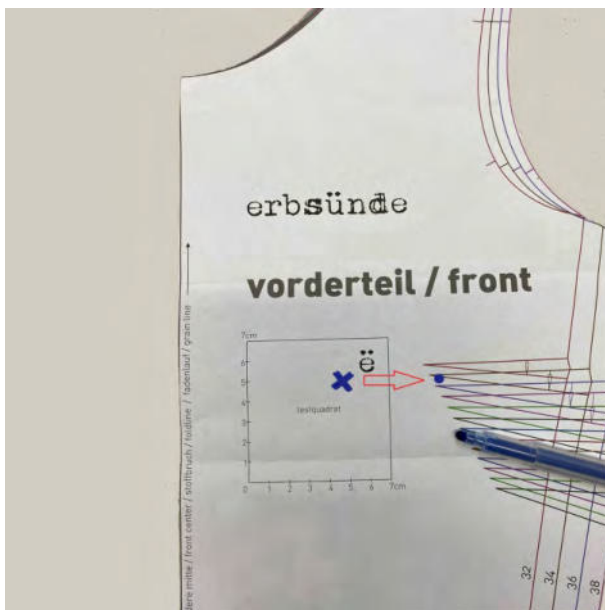
While doing this wear the bra you usually wear.



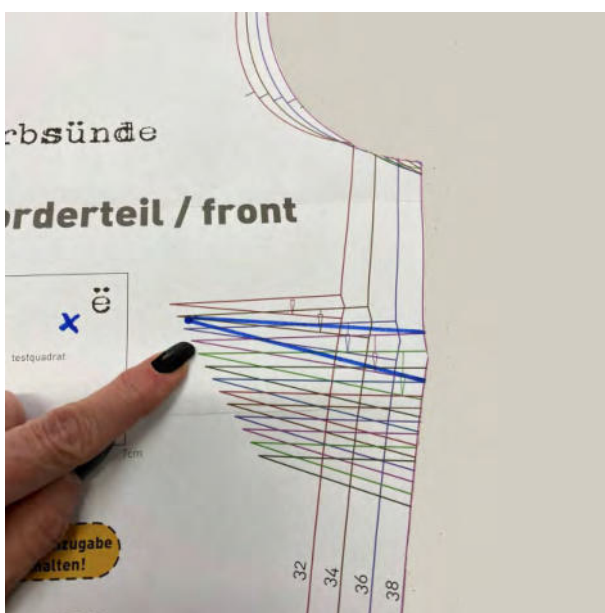
Now mark the point where your nipple is located.

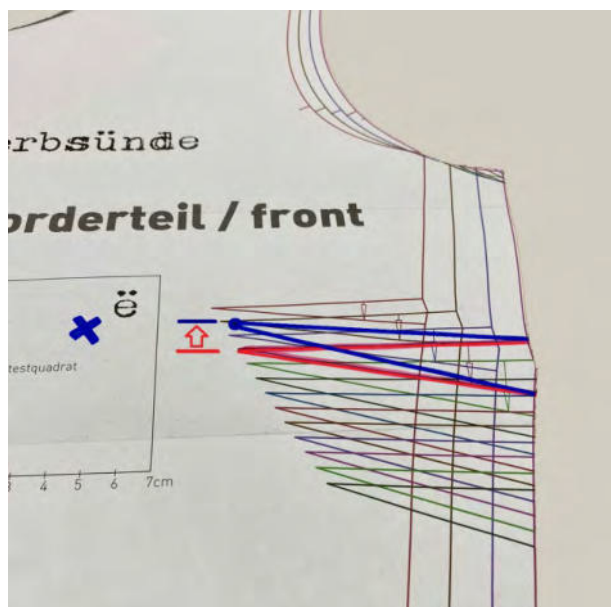


You have now marked the height at which the apex of your bust dart should sit. Transfer this determined height to the height of the apex of the bust dart drawn on the pattern (point in the image).



Now, starting from the new height of the bust dart apex, draw new lines connecting to the original bust dart lines. My finger indicates the height of the original dart.





Here you can see the old (red lines) and new (blue lines) bust darts for comparison. The apex of the bust dart has been shifted approximately 1 cm upwards, while the side remains the same.

Now cut your fabric and transfer the newly placed bust dart.